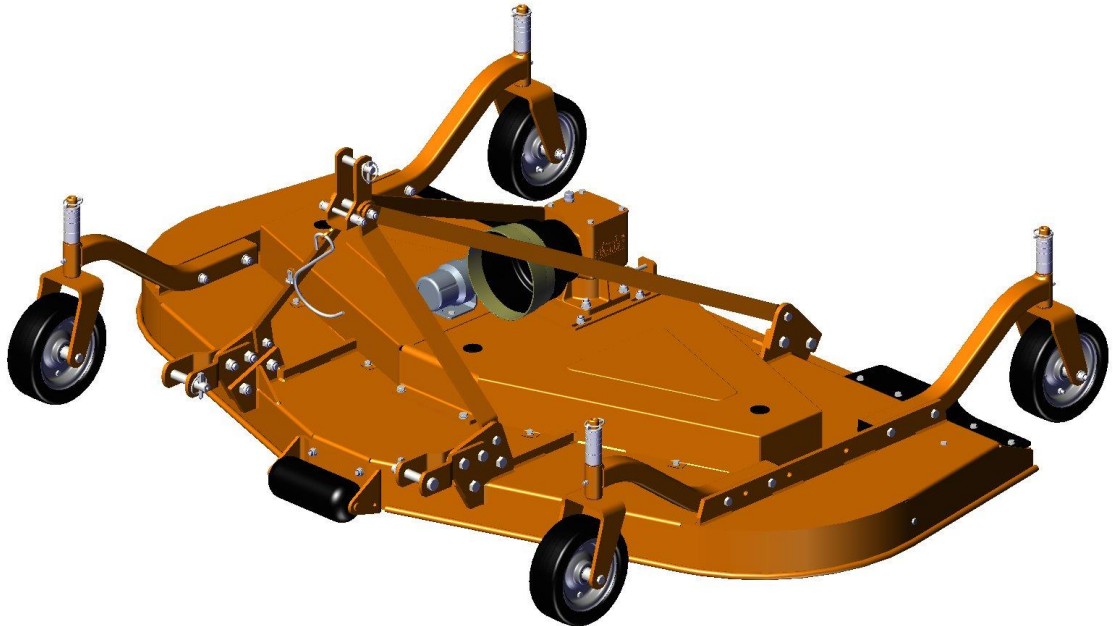




PARTS CATALOGUE



COSMO BULLY GROOMING MOWER SGM SERIES

Tirth Agro Technology Private Limited

An ISO 9001:2015 Certified Company



MISSION:

Our mission is to manufacture & supply the most technologically advanced agricultural machinery & implement, worldwide, with acknowledged reliability, outstanding quality and with support by excellent services.

STRATEGY:

Our strategy is to provide best quality with customer delight on all parameters of agricultural machinery & implement, services and reach.

Part Number:

Publication date: 18/05/2024 (Ver: 00)

Language: English

Produced by:

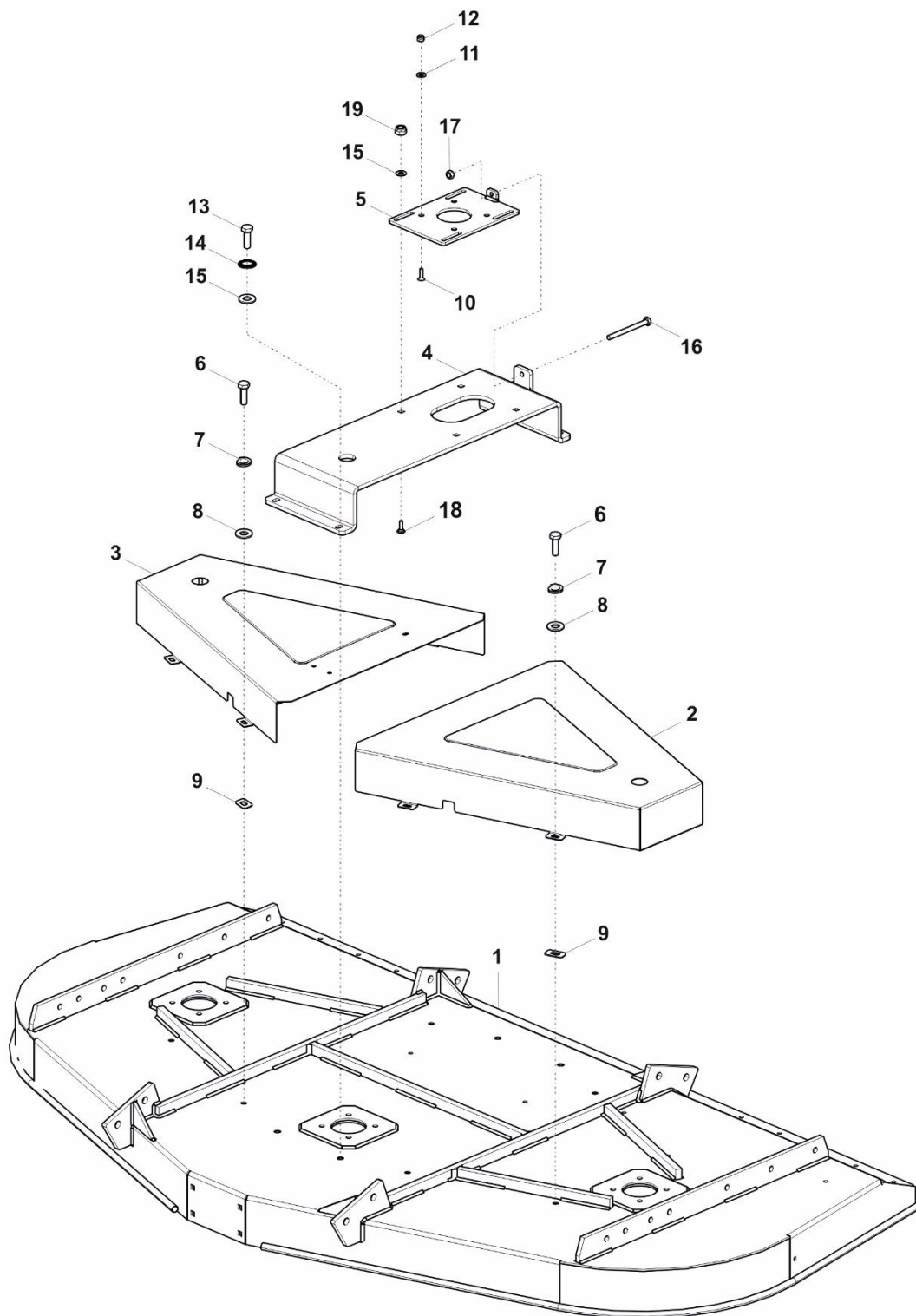
M/s-Tirth Agro Technology Private Limited



Contents

FRAME ASSEMBLY	1
THREE POINT LINKAGE ASSEMBLY	3
WHEEL ASSEMBLY.....	5
GEAR BOX ASSEMBLY.....	7
GEAR BOX ASSEMBLY FOR 1000-2000 RPM	9
GEAR BOX ASSEMBLY FOR 1000 RPM CCW	11
SPINDLE ASSEMBLY	13
BELT AND PULLEY ASSEMBLY	15
MULCHING KIT ASSEMBLY	17
CE KITS ASSEMBLY	19

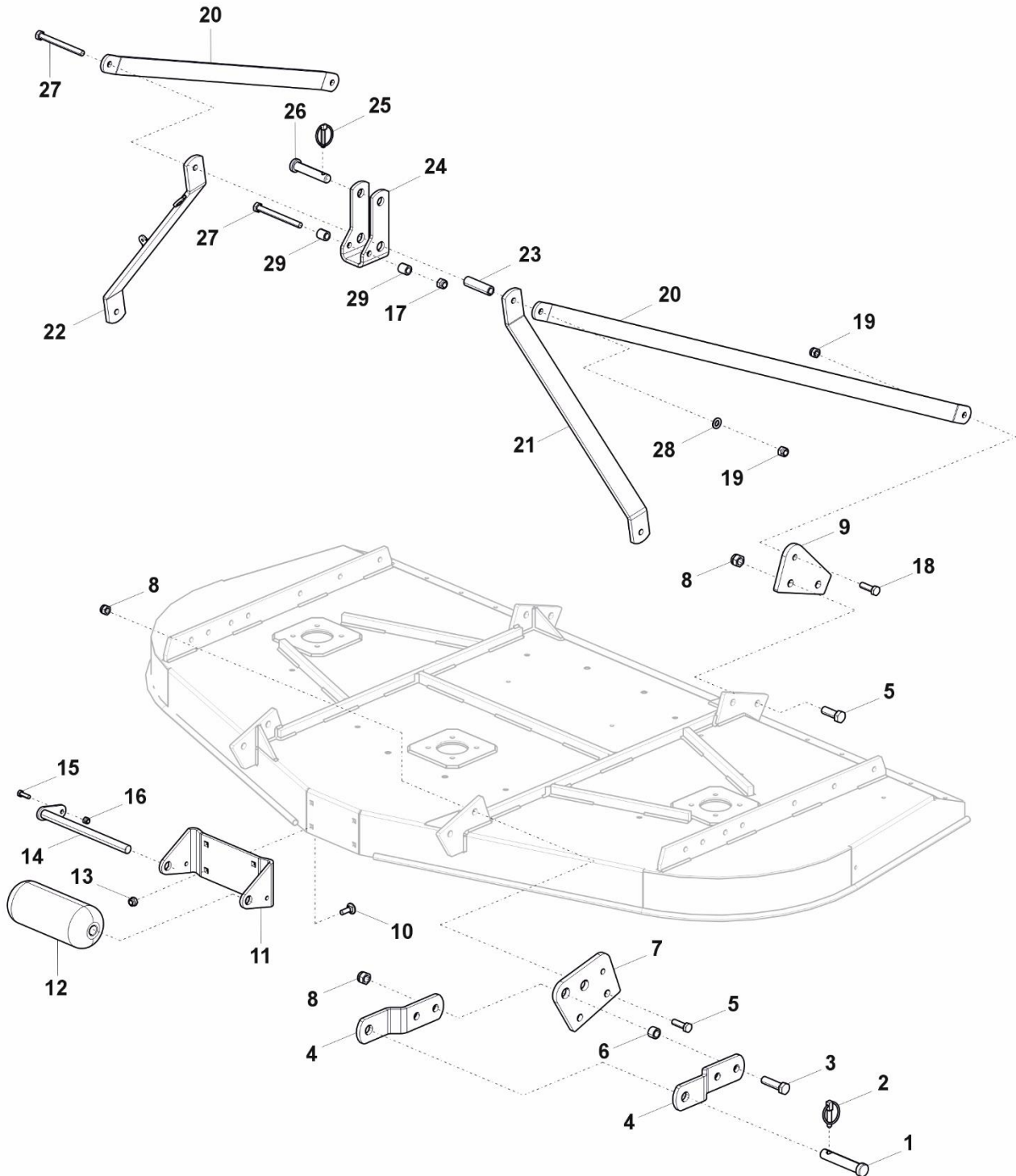
FRAME ASSEMBLY



FRAME ASSEMBLY

Pos.	Part Code	Part Description	Qty.	Remarks
1	124151951	WELD ASSEMBLY, FRAM(SGM-1.2) V1-NEW-N	1	APPLICABLE FOR SGM-1.2
	124152005	WELD ASSEMBLY, FRAME (SGM-1.5) V1-NEW		APPLICABLE FOR SGM-1.5
	124152018	WELD ASSEMBLY, FRAM SGM-1.8 V1-NEW-N		APPLICABLE FOR SGM-1.8
	124151937	WELD ASSEMBLY, FRAM(SGM-2.1) V1-NEW-N		APPLICABLE FOR SGM-2.1
2	33089	BELT COVER WELDMENT LH-(SGM-1.2)	1	APPLICABLE FOR SGM-1.2
	33091	BELT COVER WELDMENT LH-(SGM-1.5)		APPLICABLE FOR SGM-1.5
	33093	BELT COVER WELDMENT LH-(SGM-1.8)		APPLICABLE FOR SGM-1.8
	33087	BELT COVER WELDMENT LH-(SGM-2.1)		APPLICABLE FOR SGM-2.1
3	33088	BELT COVER WELDMENT RH-(SGM-1.2)	1	APPLICABLE FOR SGM-1.2
	33090	BELT COVER WELDMENT RH-(SGM-1.5)		APPLICABLE FOR SGM-1.5
	33092	BELT COVER WELDMENT RH-(SGM-1.8)		APPLICABLE FOR SGM-1.8
	33086	BELT COVER WELDMENT RH-(SGM-2.1)		APPLICABLE FOR SGM-2.1
4	33185	GEARBOX SUPPORT WELDMENT (SGM-1.2M) V1	1	APPLICABLE FOR SGM-1.2
	33186	GEARBOX SUPPORT WELDMENT (SGM-1.5M) V1		APPLICABLE FOR SGM-1.5
	33187	GEARBOX SUPPORT WELDMENT (SGM-1.8M) V1		APPLICABLE FOR SGM-1.8
	33184	GEARBOX SUPPORT WELDMENT (SGM-2.1M) V1		APPLICABLE FOR SGM-2.1
5	33020	GEARBOX SUPPORT PLATE (SGM)	1	
6	8171	HEX BOLT M8X1.25X25(IS1364-2)(8.8)(ZP)	8	
7	14360	SPRING WASHER M8.00(IS 3063)(ZP)	8	
8	8064	PLAIN WASHER 8MM (BS-4320)	8	
9	33101	GASKET, BELT COVER (SGM)	8	
10	2607	CSK BOLT M12x1.75x45(DIN 7991)(10.9)(ZP)	4	
11	8126	PLAIN WASHER 12MM (BS-4320)-ZP	4	
12	1209	NYLOCK NUT M12X1.75 (DIN-982)(8)(ZP)	4	
13	3340	HEX BOLT M10X1.50X30(DIN933)(8.8)(ZP)	4	
14	33099	WASHER SCHNNOR M10 (SGM)	4	
15	8078	PLAIN WASHER 10MM (BS-4320)	8	
16	33102	HEX BOLT M10X1.50X75(DIN933)(8.8)(ZP)	1	APPLICABLE FOR SGM-1.2
	33108	HEX BOLT M10X1.50X90(DIN933)(8.8)(ZP)		APPLICABLE FOR SGM-1.5
	33011	HEX BOLT M10X1.50X120(DIN933)(8.8)(ZP)		APPLICABLE FOR SGM-1.8
	33011	HEX BOLT M10X1.50X120(DIN933)(8.8)(ZP)		APPLICABLE FOR SGM-2.1
17	1299	HEX NUT M10X1.50(IS 1363)(8)(ZP)	1	
18	25745	ROUND HEAD SQ. NECK BOLT M10 X 1.5 X 35	4	
19	1298	NYLOCK NUT M10X1.50 (DIN-982)(8)(ZP)	4	

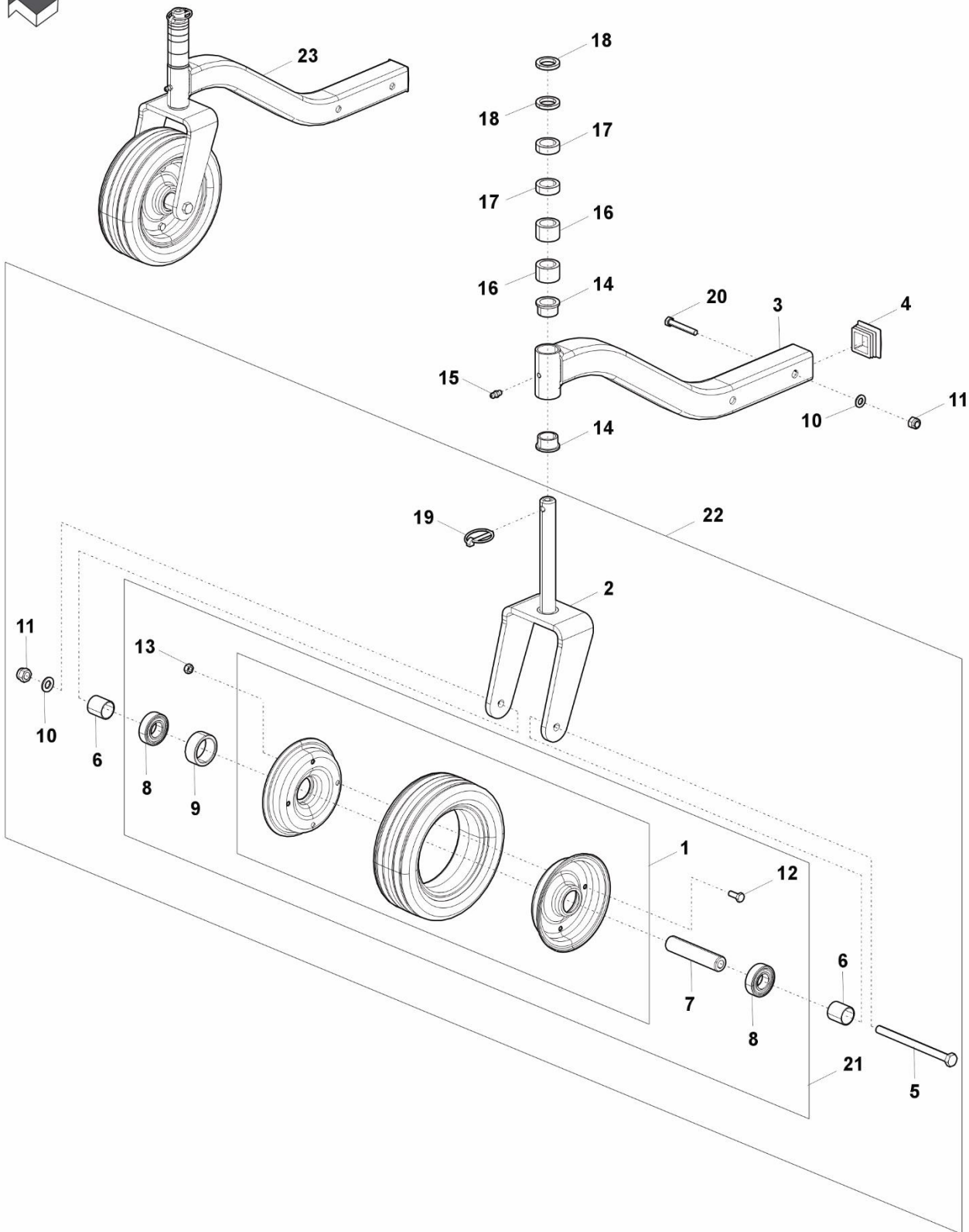
THREE POINT LINKAGE ASSEMBLY



THREE POINT LINKAGE ASSEMBLY

Pos.	Part Code	Part Description	Qty.	Remarks
1	1216	HITCH PIN BOTTOM CAT-I (DIA-22 X 129)	2	
2	23062	LINCH PIN (D10XL45)	2	
3	8117	HEX BOLT M16X2.00X60(IS1364-1)(8.8)(ZP)	4	
4	33144	LOWER HITCH (SGM)	4	
5	8196	HEX BOLT M16X2.00X45(IS1364-1)(8.8)(ZP)	8	
6	33027	BUSHING, LOWER HITCH (SGM)	4	
7	33025	CONNECTION PLATE, FRONT (SGM)	2	
8	1231	NYLOCK NUT M16X2.00 (DIN-982)(8)(ZP)	12	
9	33026	CONNECTION PLATE, REAR (SGM)	2	
10	8174	RO HD SQ NECK BOLT M10 X 1.5 X 30 FT-8.8	4	
11	33179	BRACKET, FRONT ROLLER (SGM) V1	1	
12	33024	FRONT ROLLER, AIR WHEELS (SGM)	1	
13	1298	NYLOCK NUT M10X1.50 (DIN-982)(8)(ZP)	4	
14	33022	ROD WELDMENT, FRONT ROLLER (SGM)	1	
15	8171	HEX BOLT M8X1.25X25(IS1364-2)(8.8)(ZP)	1	
16	1297	NYLOCK NUT M8X1.25 (DIN-982)(8)(ZP)	1	
17	33197	NYLOC NUT M12X1.75 (GR.8) DIN982 TYP	1	
18	17433	HEX BOLT M12X1.75X40(DIN931)(8.8)(ZP)	4	
19	1209	NYLOCK NUT M12X1.75 (DIN-982)(8)(ZP)	5	
20	33032	TOP HITCH ARM, (SGM-1.2M)	2	APPLICABLE FOR SGM-1.2
	33033	TOP HITCH ARM (SGM-1.5M)		APPLICABLE FOR SGM-1.5
	33034	TOP HITCH ARM (SGM-1.8M)		APPLICABLE FOR SGM-1.8
	33031	TOP HITCH ARM (SGM-2.1M)		APPLICABLE FOR SGM-2.1
21	33028	TOP HITCH SUPPORT (LH) (SGM)	1	
22	33117	TOP HITCH SUPPORT WELDMENT (SGM)	1	
23	124151917	SPACER, UPER 3POINT HICH-N SGM	1	
24	33029	COUPLING, UPPER 3-POINT HITCH (SGM)	1	
25	1218	LINCH PIN	1	
26	33036	PIN, TOP HITCH (CATEGORY I) (SGM)	1	
27	33104	HEX BOLT M12X1.75X130(DIN931)(8.8)(ZP)	2	
28	8126	PLAIN WASHER 12MM (BS-4320)-ZP	1	
29	33115	BUSH 21X13X22 (SGM)	2	

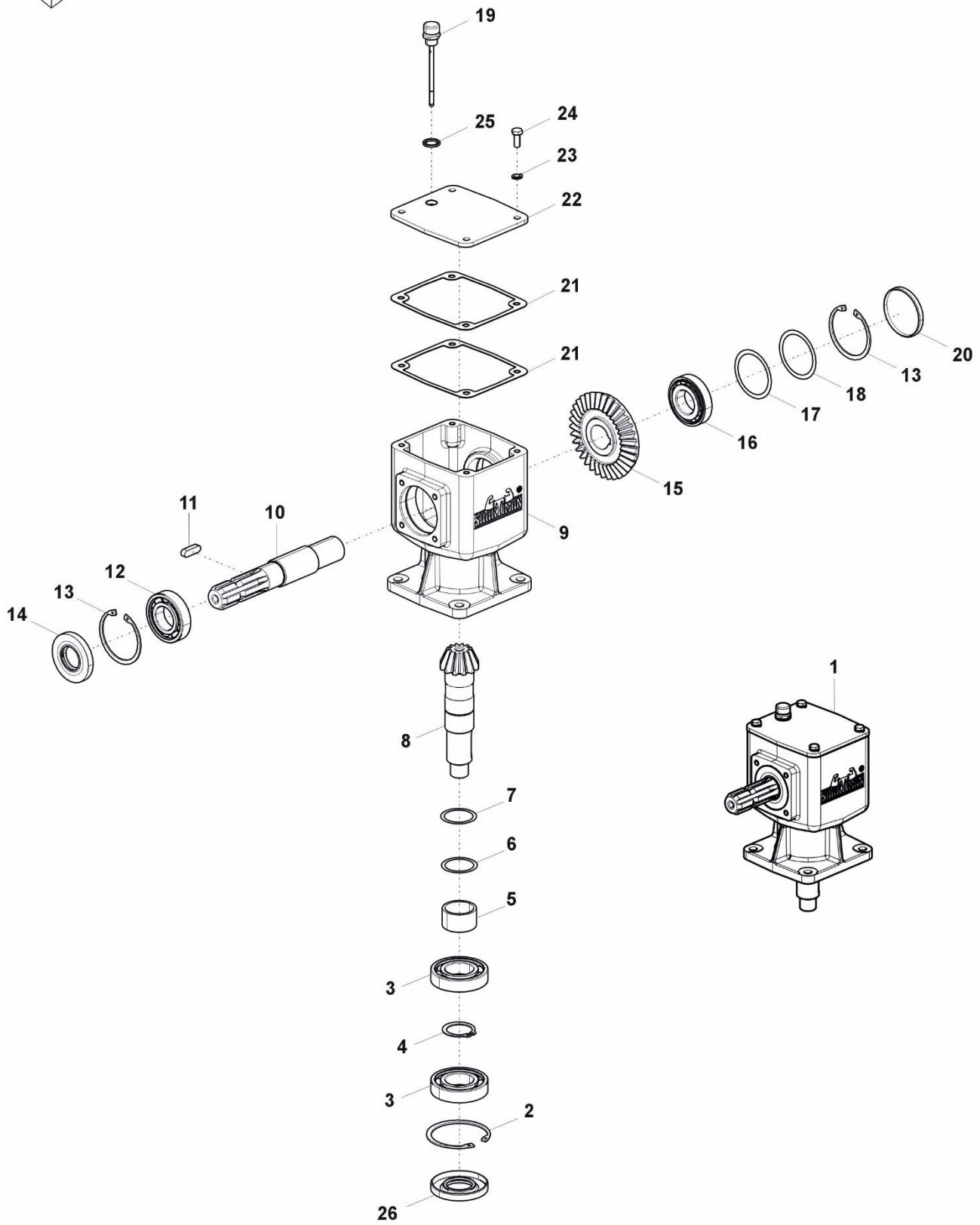
WHEEL ASSEMBLY



WHEEL ASSEMBLY

Pos.	Part Code	Part Description	Qty.	Remarks
1	33008	SOLID TYRE 10X3.25(SGM)	1	
2	33141	WHEEL YOKE REINF. WELD.(SGM) V1	1	
3	124152366	WHEEL, HALF ARM WELD N-SGM	1	
4	23163	CAP, SQ. PIPE PLASTIC 50MM	1	
5	33154	HEX BOLT M12X1.75X160(DIN931)(8.8)(ZP)	1	
6	33143	SPACER, SOLID TYRE(30X26X31) (SGM)	2	
7	33142	WHEEL MOUNTING PIPE NEW (SGM)	1	
8	8105	BEARING 6205 2RS	2	
9	33065	SPACER 52X40X17 (SGM)	1	
10	8126	PLAIN WASHER 12MM (BS-4320)-ZP	AR	
11	1209	NYLOCK NUT M12X1.75 (DIN-982)(8)(ZP)	AR	
12	8040	HEX BOLT M8X1.25X20(IS1364-2)(8.8)(ZP)	4	
13	8181	HEX NUT M8X1.25(IS 1363)(8)(ZP)	4	
14	33007	PLASTIC BEARING MFM-2532-20	2	
15	20148	GREASE NIPPLE M8 X 1.25	1	
16	33075	SPACER 25.5X38X25 (SGM)	2	
17	33074	SPACER 25.5X38X12.5 (SGM)	2	
18	33073	SPACER 25.5X38X6 (SGM)	2	
19	8204	LINCH PIN SMALL (CHO)	1	
20	33103	HEX BOLT M12X1.75X80(DIN931)(8.8)(ZP)	AR	
21	124113716	WHEEL, ASSEMBLY SGM	1	
22	124134046	ASSEMBLY, WHEEL YOKE, SGM-V1	1	
23	33181	TUBE ASM. SOLID TYRE 10X3.25"(10MM) (SGM V1)	4	

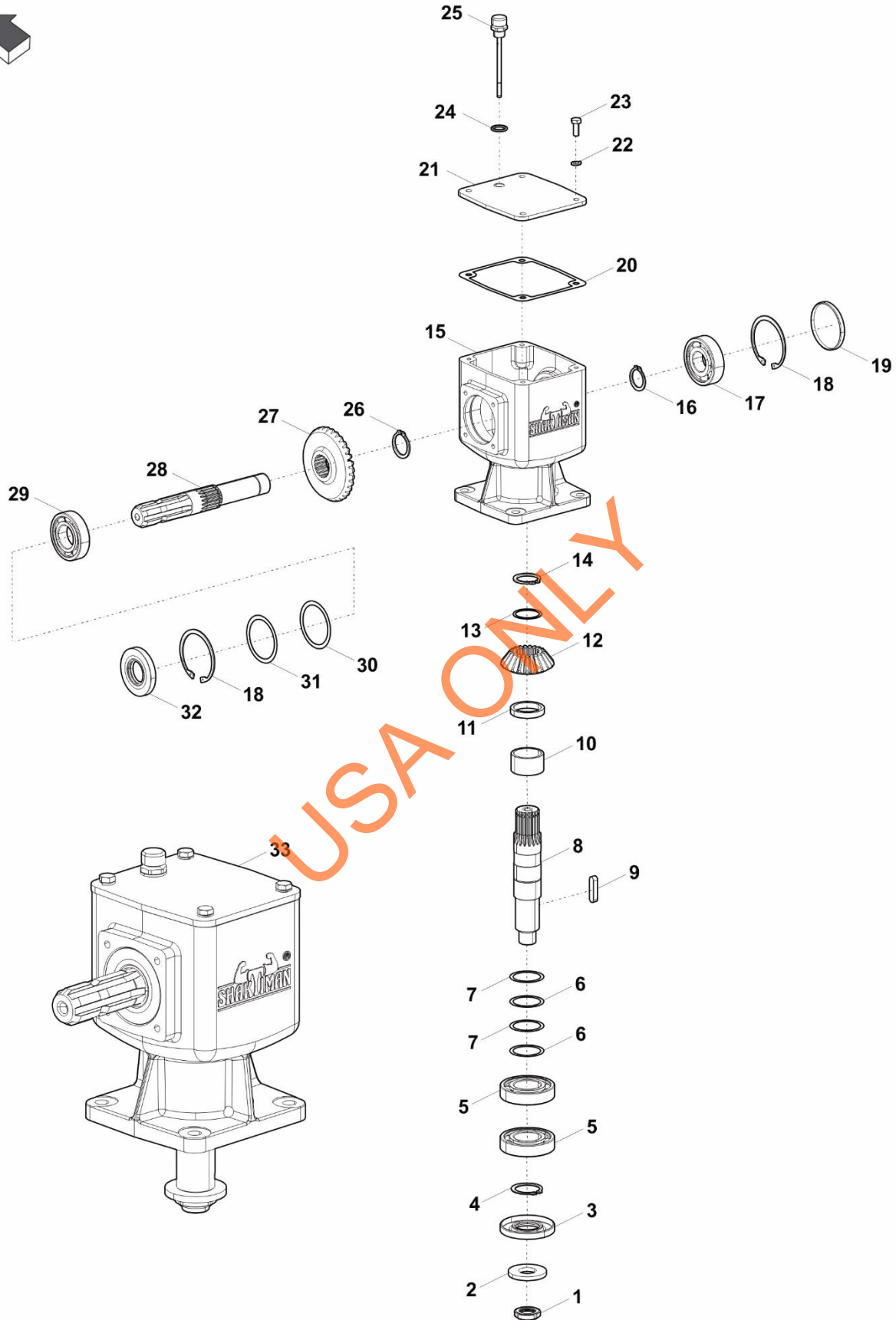
GEAR BOX ASSEMBLY



GEAR BOX ASSEMBLY

Pos.	Part Code	Part Description	Qty.	Remarks
1	33085	GEAR BOX ASSEMBLY(SGM)	1	
2	1130	CIRCLIP INTERNAL 80MM (DIN 472)	1	
3	7033	BEARING 6208	2	
4	8027	CIRCLIP EXTERNAL 40MM (DIN 471)	1	
5	33078	SPACER, PINION 40X48X28 (SGM)	1	
6	35071	RO SHIMS MS 50 X 40.5 X 0.3	AR	
7	35070	RO SHIMS MS 50 X 40.5 X 0.2	AR	
8	33084	BEVEL PINION SHAFT 12 TEETH (SGM)	1	
9	33005	GEAR BOX HOUSING (SGM)	1	
10	33082	INPUT SHAFT, (SGM)	1	
11	33050	PARALLEL KEY 10 X 8 X 32	1	
12	10143	BEARING 6207	1	
13	1002	CIRCLIP INTERNAL 72MM (DIN 472)	2	
14	1001	OIL SEAL 35 X 72 X 10	1	
15	33083	BEVEL GEAR Z-34 TEETH (SGM)	1	
16	1003	BEARING 30207	1	
17	4652	RO SHIMS MS 71.75 X 60.25 X 0.2	AR	
18	4653	RO SHIMS MS 71.75 X 60.25 X 0.3	AR	
19	14316	DIPSTICK 106MM (M16 X 1.5) (1MLSR202)	1	
20	14119	OIL SEAL 72 x 8	1	
21	33140	GASKET, GEARBOX COVER (SGM) 0.5 NA	AR	
22	33080	GEARBOX COVER (SGM)	1	
23	14360	SPRING WASHER M8.00(IS 3063)(ZP)	4	
24	8040	HEX BOLT M8X1.25X20(IS1364-2) (8.8) (ZP)	4	
25	19007	DOWTY SEAL (3/8 BSP)	1	
26	35005	OIL SEAL 40 X 80 X 10 (MAX)	1	

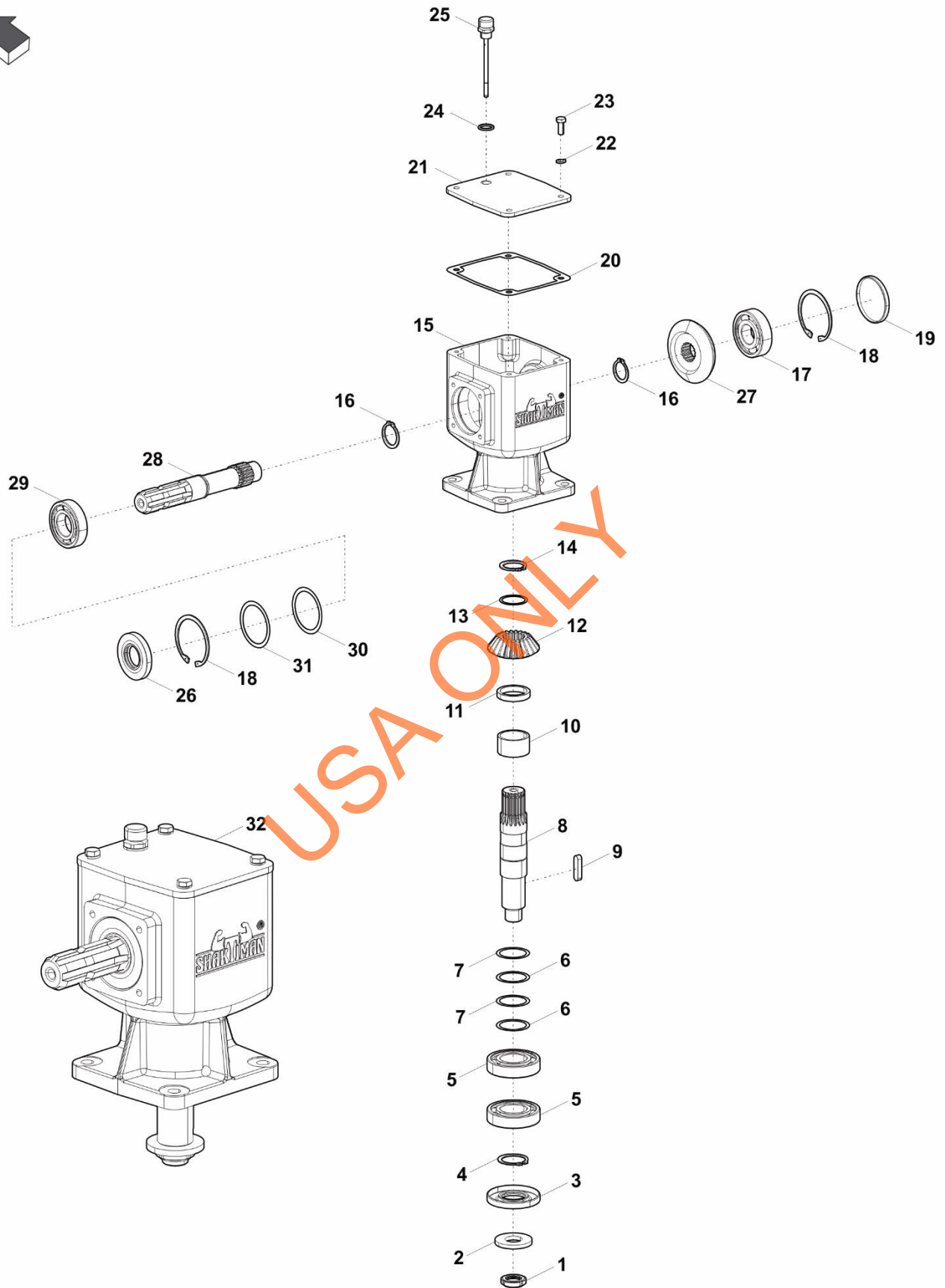
GEAR BOX ASSEMBLY FOR 1000-2000 RPM



GEAR BOX ASSEMBLY FOR 1000-2000 RPM

Pos.	Part Code	Part Description	Qty.	Remarks
1	33006	GUK SELF LOCKING NUT M25X1.5	1	
2	33079	WASHER, DRIVING PULLEY 25X56X6 (SGM)	1	
3	8154	OIL SEAL 40 X 80 X 10	1	
4	8027	CIRCLIP EXTERNAL 40MM (DIN 471)	1	
5	7033	BEARING 6208	2	
6	35070	RO SHIMS MS 50 X 40.5 X 0.2	2	
7	35071	RO SHIMS MS 50 X 40.5 X 0.3	2	
8	124116260	SHAFT, OUTPUT V2 SGM	1	
9	33054	PARALLEL KEY 10 X 8 X 40	1	
10	33078	SPACER, PINION 40X48X28 (SGM)	1	
11	124115659	SPACER, OUTPUT SGM 1000	1	APPLICABLE FOR 1000 RPM
	124115660	SPACER, OUTPUT SGM 2000		APPLICABLE FOR 2000 RPM
12	124115657	GEAR, T-21 M-3.5 PN SGM 1000	1	APPLICABLE FOR 1000 RPM
	124115656	GEAR, T-31 M-3 CR SGM 2000		APPLICABLE FOR 2000 RPM
13	124115661	SPACER, 35X42X1	1	
14	10349	CIRCLIP EXTERNAL 35MM (DIN 471) (HD)	1	
15	33005	GEAR BOX HOUSING (SGM)	1	
16	30126706	CIRCLIP EXTERNAL 30MM (DIN 471) (HD)	1	
17	70232897	BALL BEARING 6306	1	
18	1002	CIRCLIP INTERNAL 72MM (DIN 472)	2	
19	14119	OIL SEAL 72 x 8	1	
20	33140	GASKET, GEARBOX COVER (SGM) 0.5 NA	1	
21	33080	GEARBOX COVER (SGM)	1	
22	14360	SPRING WASHER M8.00(IS 3063) (ZP)	4	
23	8040	HEX BOLT M8X1.25X20(IS1364-2) (8.8) (ZP)	4	
24	19007	DOWTY SEAL (3/8 BSP)	1	
25	14316	DIPSTICK 106MM (M16 X 1.5) (1MLSR202)	1	
26	999950820	CIRCLIP EXTERNAL 34MM (IS 3075) (HD)	1	
27	124115655	GEAR, T-32 M-3.5 CR SGM 1000	1	APPLICABLE FOR 1000 RPM
	124115658	GEAR, T-24 M-3 PN SGM 2000		APPLICABLE FOR 2000 RPM
28	124116259	SHAFT, INPUT V2 SGM	1	
29	10143	BEARING 6207	1	
30	4652	RO SHIMS MS 71.75 X 60.25 X 0.2	1	
31	4653	RO SHIMS MS 71.75 X 60.25 X 0.3	1	
32	1001	OIL SEAL 35 X 72 X 10	1	
33	124116327	GEARBOX, 1000 RPM SGM	1	APPLICABLE FOR 1000 RPM
	124116328	GEARBOX, 2000 RPM SGM		APPLICABLE FOR 2000 RPM

GEAR BOX ASSEMBLY FOR 1000 RPM CCW

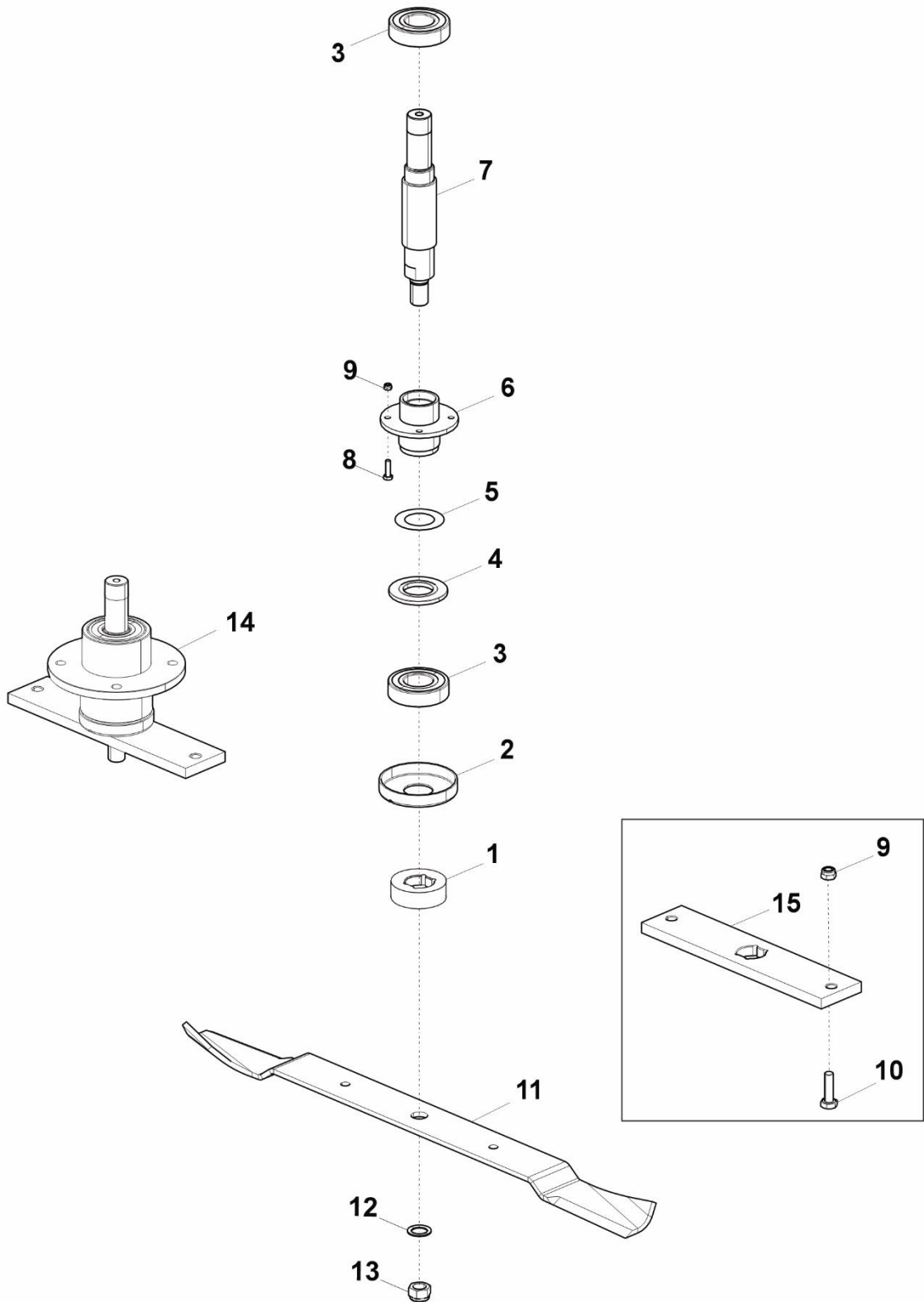


GEAR BOX ASSEMBLY FOR 1000 RPM CCW

Pos.	Part Code	Part Description	Qty.	Remarks
1	33006	GUK SELF LOCKING NUT M25X1.5	1	
2	33079	WASHER, DRIVING PULLEY 25X56X6 (SGM)	1	
3	8154	OIL SEAL 40 X 80 X 10	1	
4	8027	CIRCLIP EXTERNAL 40MM (DIN 471)	1	
5	7033	BEARING 6208	2	
6	35070	RO SHIMS MS 50 X 40.5 X 0.2	2	
7	35071	RO SHIMS MS 50 X 40.5 X 0.3	2	
8	124116260	SHAFT, OUTPUT V2 SGM	1	
9	33054	PARALLEL KEY 10 X 8 X 40	1	
10	33078	SPACER, PINION 40X48X28 (SGM)	1	
11	124115659	SPACER, OUTPUT SGM 1000	1	
12	124115657	GEAR, T-21 M-3.5 PN SGM 1000	1	
13	124115661	SPACER, 35X42X1	1	
14	10349	CIRCLIP EXTERNAL 35MM (DIN 471) (HD)	1	
15	33005	GEAR BOX HOUSING (SGM)	1	
16	999950820	CIRCLIP EXTERNAL 34MM (IS 3075) (HD)	2	
17	70232897	BALL BEARING 6306	1	
18	1002	CIRCLIP INTERNAL 72MM (DIN 472)	2	
19	14119	OIL SEAL 72 x 8	1	
20	33140	GASKET, GEARBOX COVER (SGM) 0.5 NA	1	
21	33080	GEARBOX COVER (SGM)	1	
22	14360	SPRING WASHER M8.00(IS 3063) (ZP)	4	
23	8040	HEX BOLT M8X1.25X20(IS1364-2) (8.8) (ZP)	4	
24	19007	DOWTY SEAL (3/8 BSP)	1	
25	14316	DIPSTICK 106MM (M16 X 1.5) (1MLSR202)	1	
26	1001	OIL SEAL 35 X 72 X 10	1	
27	124115655	GEAR, T-32 M-3.5 CR SGM 1000	1	
28	124139146	SHAFT, CCW INPUT V2 SGM	1	
29	10143	BEARING 6207	1	
30	4652	RO SHIMS MS 71.75 X 60.25 X 0.2	1	
31	4653	RO SHIMS MS 71.75 X 60.25 X 0.3	1	
32	124139219	GEARBOX, CCW GEARBOX 1000 SGM	1	

USA ONLY

SPINDLE ASSEMBLY

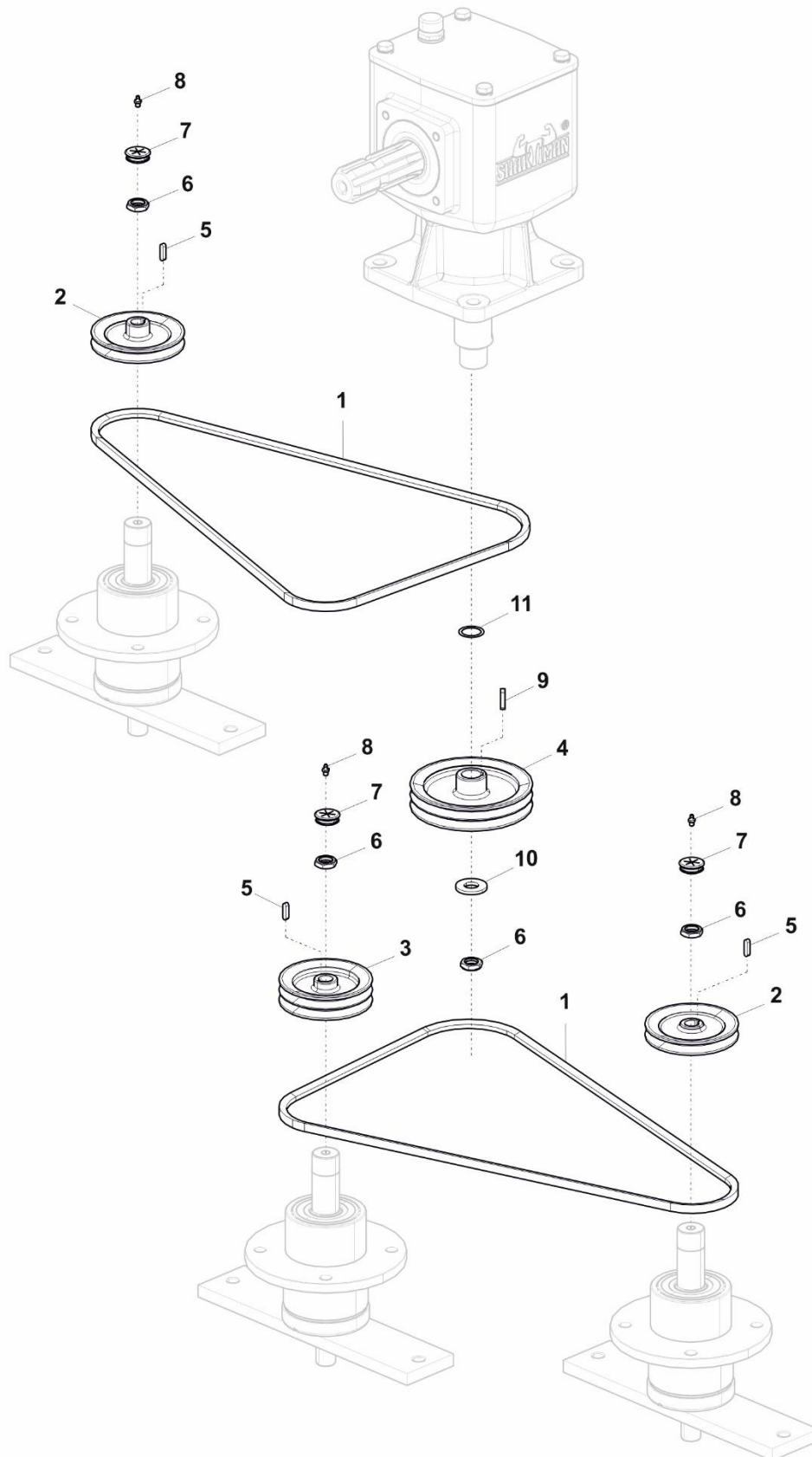


SPINDLE ASSEMBLY

Pos.	Part Code	Part Description	Qty.	Remarks
1	33047	BUSHING, BLADE TIGHTENING (6205) (SGM)	1	
	33042	BUSHING, BLADE TIGHTENING (6206) (SGM)		
2	33041	DUST PROTECTION COVER (6206) (SGM)	1	
	33046	DUST PROTECTION COVER (6205) (SGM)		
3	12210 *	BEARING 6206 2RS	2	
	8105 *	BEARING 6205 2RS		
4	33040	SPACER WASHER (30X60X5) (6206) (SGM)	1	
	33045	SPACER WASHER 25X40X3 (6205) (SGM)		
5	33180	RO SHIMS MS 50 X 30.5 X 0.5	1	
6	33038	SPINDLE (BEARINGS 6206) (SGM)	1	
	33044	SPINDLE (BEARINGS 6205) (SGM)		
7	33193	SHAFT,SPINDLE NEW (6206 BEARINGS)(SGM)V1	1	
	33194	SHAFT,SPINDLE NEW (6205 BEARINGS)(SGM)V1		
8	3345	HEX BOLT M10X1.50X35(DIN931)(8.8)(ZP)	AR	
9	1298	NYLOCK NUT M10X1.50 (DIN-982)(8)(ZP)	AR	
10	6603	HEX BOLT M10X1.50X35(DIN933)(8.8)(ZP)	2	APPLICABLE FOR SGM-2.1
11	33176	BLADE,MOWER 60 X 6 X L-424 (SGM-1.2M) V1	1	APPLICABLE FOR SGM-1.2
	33177	BLADE,MOWER 60 X 6 X L-515.5(SGM-1.5M)V1		APPLICABLE FOR SGM-1.5
	33178	BLADE,MOWER 60 X 6 X L-616 (SGM-1.8M) V1		APPLICABLE FOR SGM-1.8
	33175	BLADE,MOWER 60 X 6 X L-730 (SGM-2.1M) V1		APPLICABLE FOR SGM-2.1
12	33100	WASHER SCHNNOR M18 (SGM)	1	
13	33138	NYLOCK NUT M18X1.50 (DIN-985)(8)(ZP)	1	
14	33196	SPINDLE ASSEMBLY (6206) (SGM 2.1) (V1)	1	APPLICABLE FOR SGM-2.1
	33155	SPINDLE ASSEMBLY (6206 BEARINGS) (SGM) V1	1	
	33158	SPINDLE ASSEMBLY (6205 BEARINGS) (SGM) V1	1	
15	33195	BLADE SUPPORT PLATE (SGM 2.1) (V1)	1	APPLICABLE FOR SGM-2.1

*NOTE: All SGM Finishing Mowers imported into Australia only have 6206 bearings

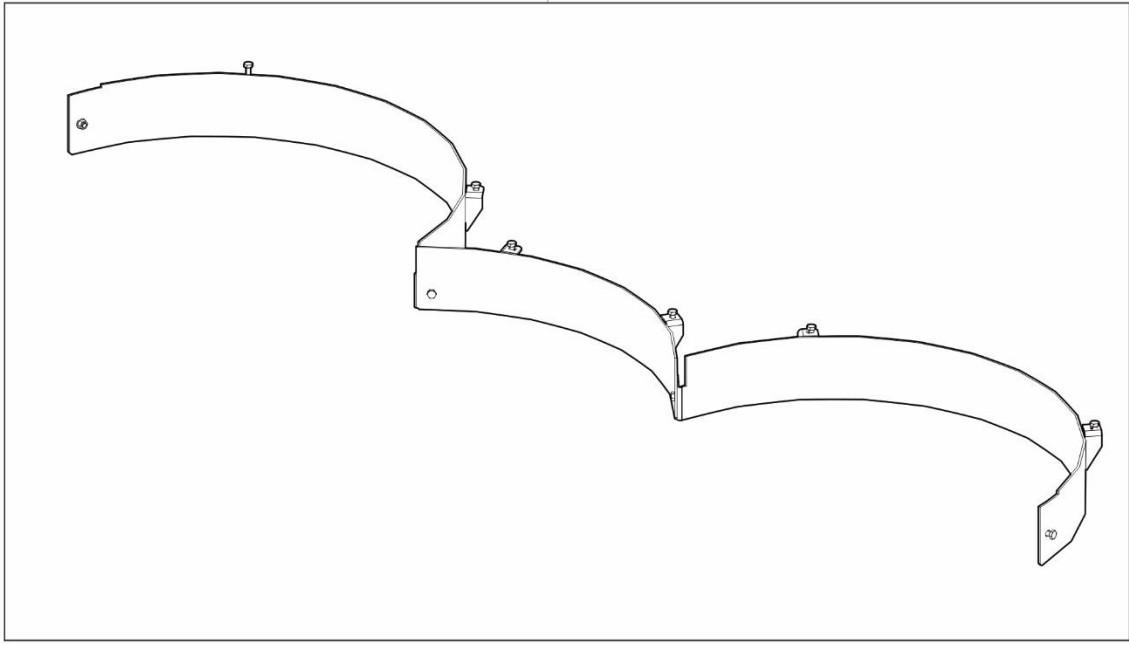
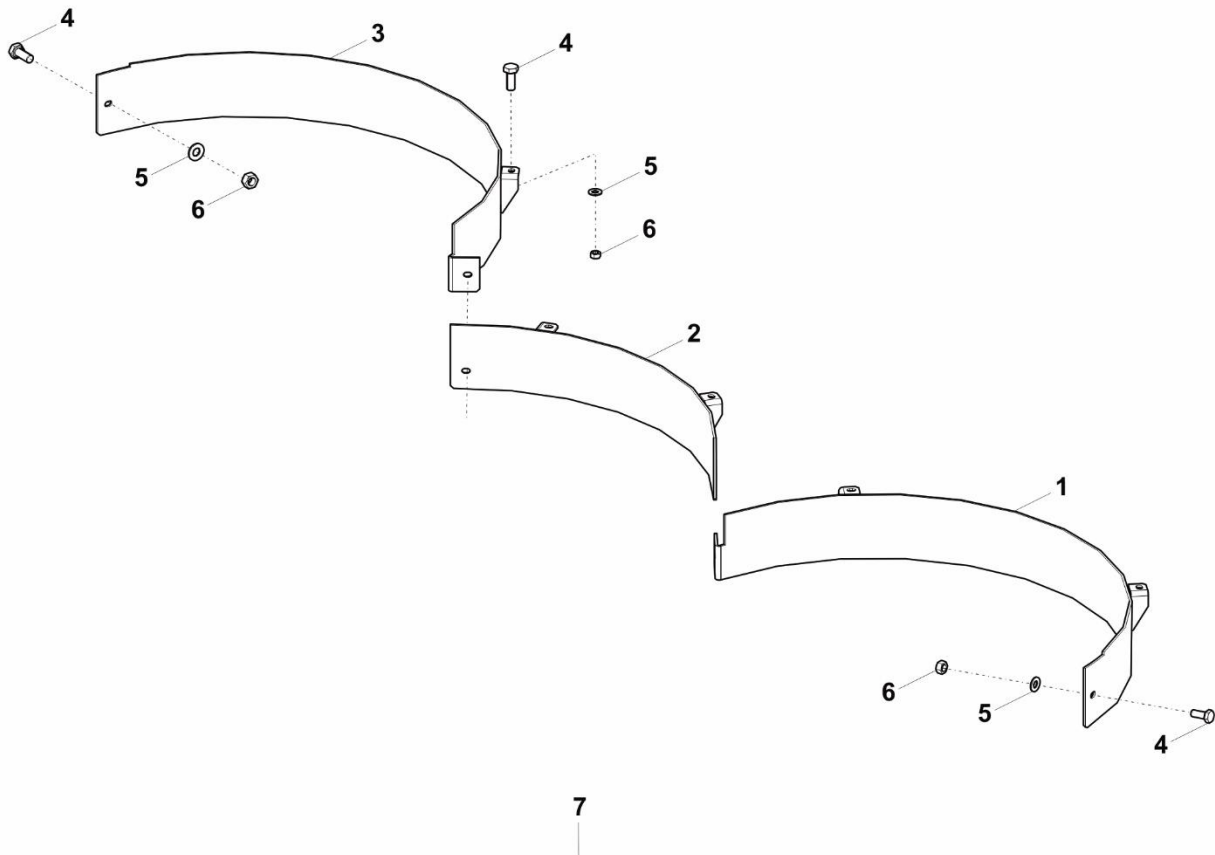
BELT AND PULLEY ASSEMBLY



BELT AND PULLEY ASSEMBLY

Pos.	Part Code	Part Description	Qty.	Remarks
1	33051	SET OF SPB BELT LD=1500(2 NOS)(SGM 1.2)	1	APPLICABLE FOR SGM-1.2
	33052	SET OF SPB BELT LD=1750(2 NOS)(SGM 1.5)		APPLICABLE FOR SGM-1.5
	33111	SET OF SPB BELT LD=1950(2 NOS)(SGM 1.8)		APPLICABLE FOR SGM-1.8
	33110	SET OF SPB BELT LD=2340 (2 NOS)(SGM 2.1)		APPLICABLE FOR SGM-2.1
2	33058	SPB TYPE PULLEY PCD=110, 1 GROOVE (SGM)	2	APPLICABLE FOR SGM-1.2
	33059	SPB TYPE PULLEY PCD=130, 1 GROOVE (SGM)		APPLICABLE FOR SGM-1.5
	33059	SPB TYPE PULLEY PCD=130, 1 GROOVE (SGM)		APPLICABLE FOR SGM-1.8
	33002	SPB TYPE PULLEY PCD=160, 1 GROOVE (SGM)		APPLICABLE FOR SGM-2.1
3	33060	SPB TYPE PULLEY PCD=110, 2 GROOVE (SGM)	1	APPLICABLE FOR SGM-1.2
	33061	SPB TYPE PULLEY PCD=130, 2 GROOVE (SGM)		APPLICABLE FOR SGM-1.5
	33061	SPB TYPE PULLEY PCD=130, 2 GROOVE (SGM)		APPLICABLE FOR SGM-1.8
	33003	SPB TYPE PULLEY PCD=160, 2 GROOVE (SGM)		APPLICABLE FOR SGM-2.1
4	33062	SPB TYPE PULLEY PCD=225, 2 GROOVE (SGM)	1	APPLICABLE FOR SGM-1.2
	33062	SPB TYPE PULLEY PCD=225, 2 GROOVE (SGM)		APPLICABLE FOR SGM-1.5
	33063	SPB TYPE PULLEY PCD=190, 2 GROOVE (SGM)		APPLICABLE FOR SGM-1.8
	33004	SPB TYPE PULLEY PCD=212, 2 GROOVE (SGM)		APPLICABLE FOR SGM-2.1
5	18168	KEY 8 X 7 X 32	3	
6	33139	NYLOCK NUT M25 X 1.5	4	
7	33021	ZERK CAP (SGM)	3	
8	6559	GREASE NIPPLE M8 X 1	3	
9	33054	PARALLEL KEY 10 X 8 X 40	1	
10	33079	WASHER, DRIVING PULLEY 25X56X6 (SGM)	1	
11	1425	RO SHIMS MS 44.5 X 35.5 X 1	1	

MULCHING KIT ASSEMBLY

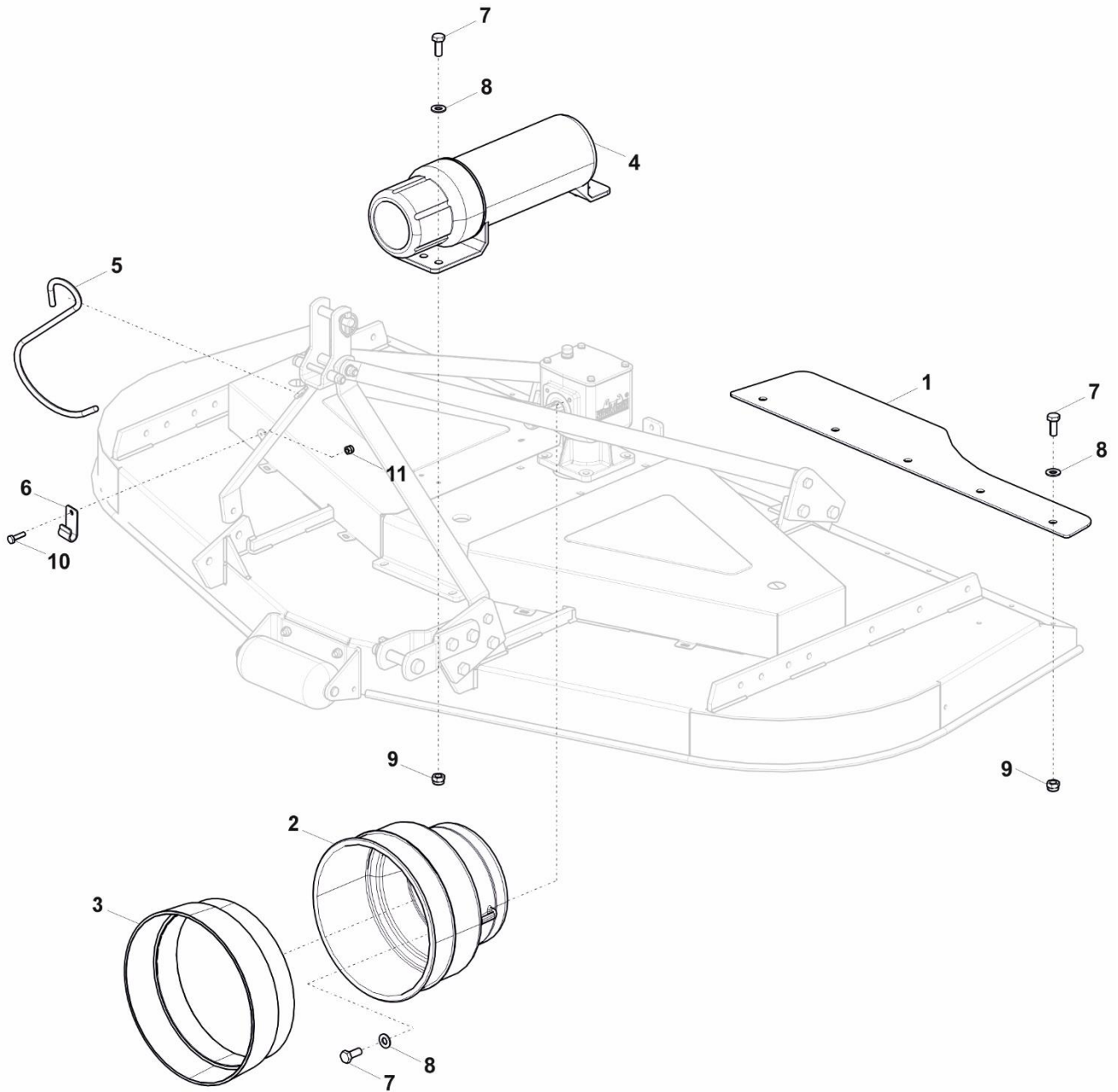


MULCHING KIT ASSEMBLY

Pos.	Part Code	Part Description	Qty.	Remarks
1	33159	CONTAINING PLATE WELDMENT RH(SGM-1.2M) V1	1	APPLICABLE FOR SGM-1.2
	33162	CONTAINING PLATE WELDMENT RH(SGM-1.5M) V1		APPLICABLE FOR SGM-1.5
	33165	CONTAINING PLATE WELDMENT RH(SGM-1.8M) V1		APPLICABLE FOR SGM-1.8
	33168	CONTAINING PLATE WELDMENT RH(SGM-2.1M) V1		APPLICABLE FOR SGM-2.1
2	33160	CONTAINING PLATE WELD MIDDLE(SGM-1.2M) V1	1	APPLICABLE FOR SGM-1.2
	33163	CONTAINING PLATE WELD MIDDLE(SGM-1.5M) V1		APPLICABLE FOR SGM-1.5
	33166	CONTAINING PLATE WELD MIDDLE(SGM-1.8M) V1		APPLICABLE FOR SGM-1.8
	33169	CONTAINING PLATE WELD MIDDLE(SGM-2.1M) V1		APPLICABLE FOR SGM-2.1
3	33161	CONTAINING PLATE WELDMENT LH(SGM-1.2M) V1	1	APPLICABLE FOR SGM-1.2
	33164	CONTAINING PLATE WELDMENT LH(SGM-1.5M) V1		APPLICABLE FOR SGM-1.5
	33167	CONTAINING PLATE WELDMENT LH(SGM-1.8M) V1		APPLICABLE FOR SGM-1.8
	33170	CONTAINING PLATE WELDMENT LH(SGM-2.1M) V1		APPLICABLE FOR SGM-2.1
4	8040	HEX BOLT M8X1.25X20(IS1364-2) (8.8) (ZP)	AR	
5	8064	PLAIN WASHER 8MM (BS-4320)	AR	
6	8181	HEX NUT M8X1.25(IS 1363) (8) (ZP)	AR	
7	33171	MULCHING KIT ASSEMBLY (SGM-1.2M) V1	1	APPLICABLE FOR SGM-1.2
	33172	MULCHING KIT ASSEMBLY (SGM-1.5M) V1		APPLICABLE FOR SGM-1.5
	33173	MULCHING KIT ASSEMBLY (SGM-1.8M) V1		APPLICABLE FOR SGM-1.8
	33174	MULCHING KIT ASSEMBLY (SGM-2.1M) V1		APPLICABLE FOR SGM-2.1

PLEASE NOTE: This is an INDENT ORDER ATTACHMENT

CE KITS ASSEMBLY



CE KITS ASSEMBLY

Pos.	Part Code	Part Description	Qty.	Remarks
1	33148	REAR SAFETY GUARD (SGM 1.2M)	2	APPLICABLE FOR SGM-1.2
	33147	REAR SAFETY GUARD (SGM 1.5M)		APPLICABLE FOR SGM-1.5
	33146	REAR SAFETY GUARD (SGM 1.8M)		APPLICABLE FOR SGM-1.8
	33145	REAR SAFETY GUARD (SGM 2.1M)		APPLICABLE FOR SGM-2.1
2	17788	PTO SHAFT GUARD PLASTIC	1	
3	36067	PTO GUARD CONE	1	
4	26030	COVER, MANUAL BOX	1	
5	14340	DRIVELINE HOOK 250MM	1	
6	23147	PLATE,HOOK HOLDING (JUMBO)	1	
7	8040	HEX BOLT M8X1.25X20(IS1364-2)(8.8)(ZP)	AR	
8	8064	PLAIN WASHER 8MM (BS-4320)	AR	
9	1297	NYLOCK NUT M8X1.25 (DIN-982)(8)(ZP)	AR	
10	35098	HEX BOLT M4X0.7X15(IS1364-2) (8.8) (ZP)	1	
11	24529	NYLOCK NUT M4X0.7(IS-7002)(8)(ZP)	1	



Tirth Agro Technology Pvt. Ltd.

**Farm Implements Pty Ltd
12 Tarmac Way, Pakenham,
Victoria AUSTRALIA 3810
T: +61 3 9706 5166
E: sales@farmimplements.com.au**