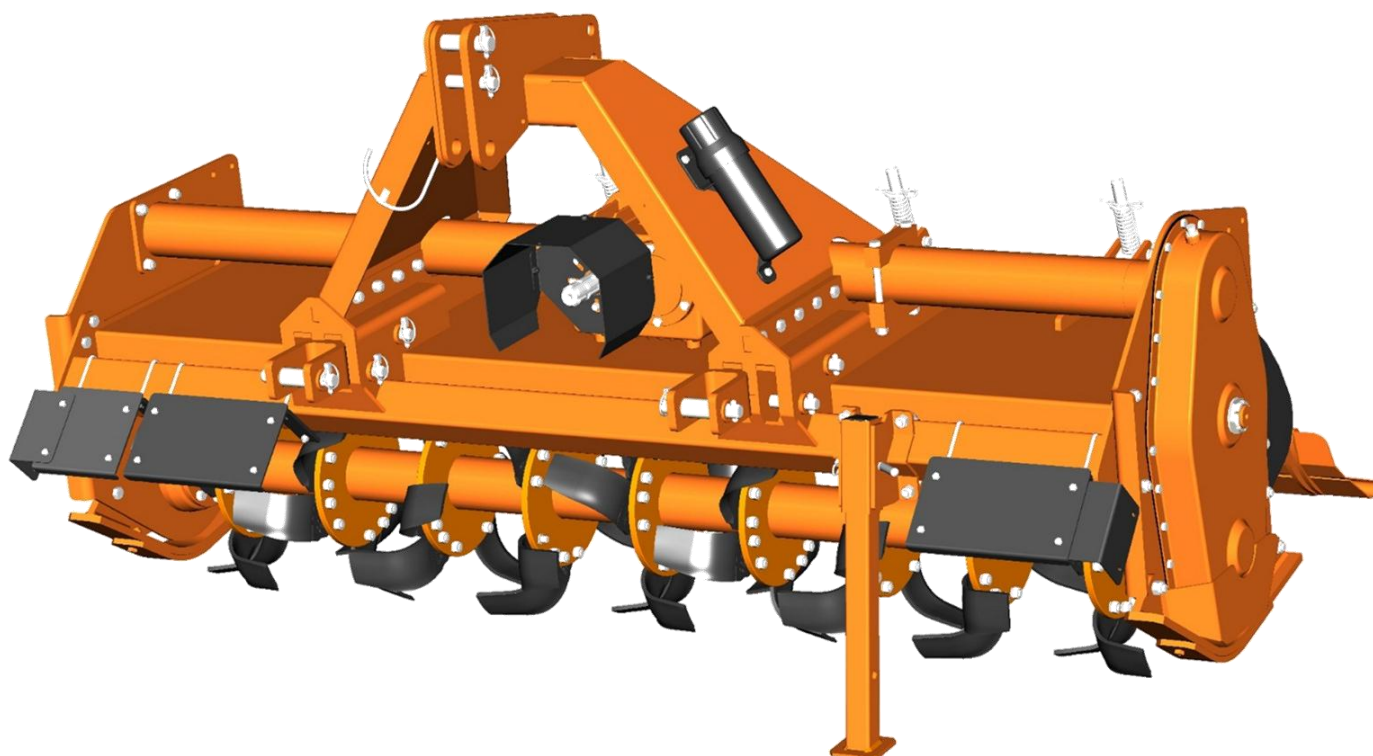
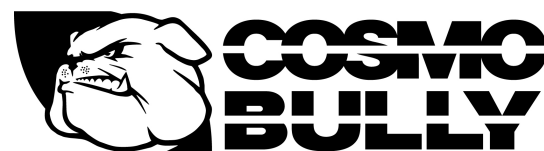


# ROTARY TILLER JUMBO SERIES



## PART'S MANUAL

ISO 9001:2015 CE Certified Company



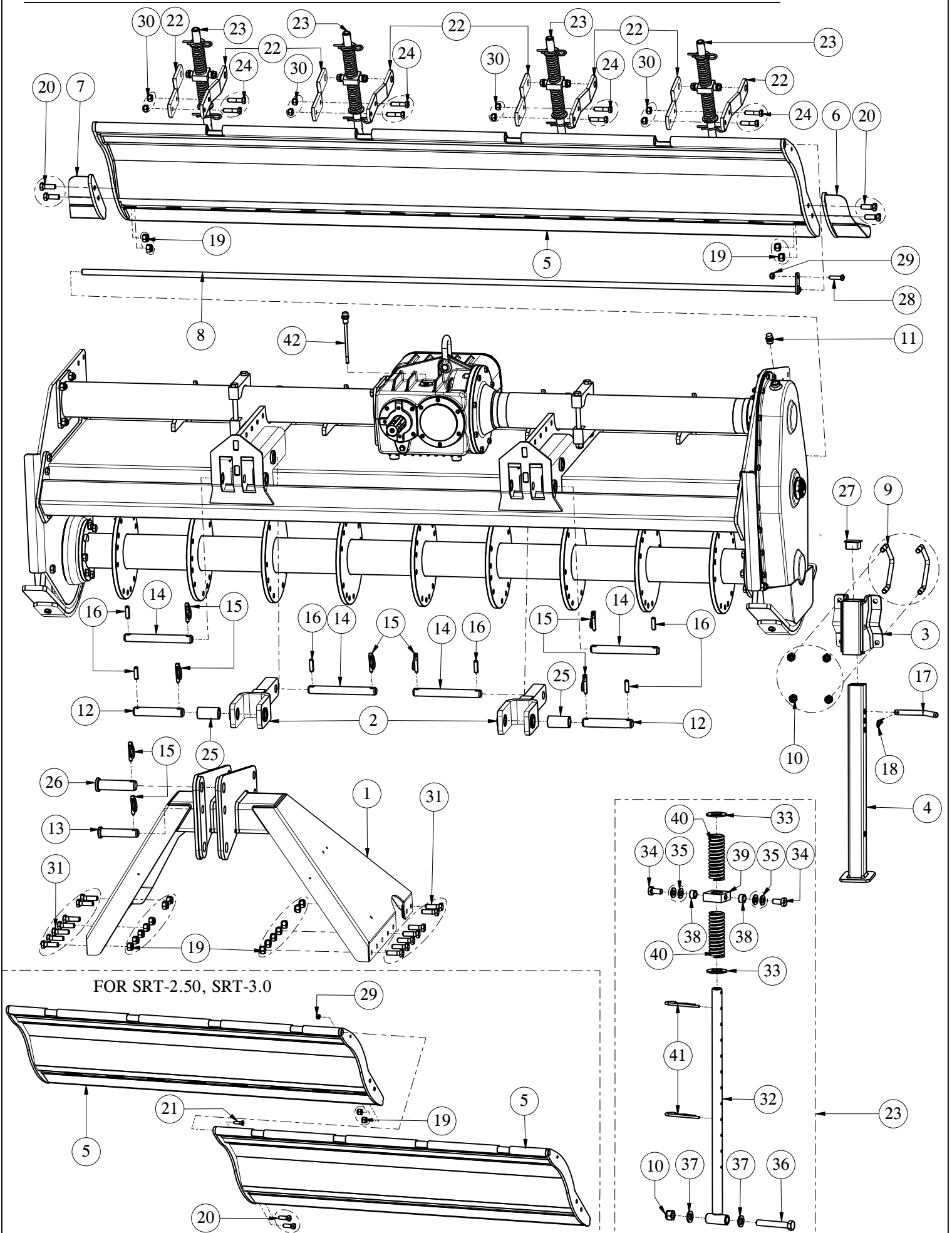
PM1125-21EN-005\_DEC\_20



# INDEX

<b>Page No.</b>	<b>Description</b>	<b>Revision Date</b>
1.1	ACCESSORIES PARTS	PM1125-21EN-000_REV_005_DEC_20
1.2	ACCESSORIES PARTS	PM1125-21EN-000_REV_005_DEC_20
2.1	MACHINE PARTS	PM1125-21EN-000_REV_005_DEC_20
2.2	MACHINE PARTS	PM1125-21EN-000_REV_005_DEC_20
3.1	GEAR BOX ASSEMBLY PARTS	PM1125-21EN-000_REV_005_DEC_20
3.2	GEAR BOX ASSEMBLY PARTS	PM1125-21EN-000_REV_005_DEC_20
4.1	END PLATE ASSEMBLY TRASMISSION SIDE	PM1125-21EN-000_REV_005_DEC_20
4.2	END PLATE ASSEMBLY TRASMISSION SIDE	PM1125-21EN-000_REV_005_DEC_20
5.1	END PLATE ASSEMBLY EXTERNAL SIDE	PM1125-21EN-000_REV_005_DEC_20
5.2	END PLATE ASSEMBLY EXTERNAL SIDE	PM1125-21EN-000_REV_005_DEC_20
6.1	ROTOR PARTS	PM1125-21EN-000_REV_005_DEC_20
6.2	ROTOR PARTS	PM1125-21EN-000_REV_005_DEC_20
7.1	ROLLER PARTS	PM1125-21EN-000_REV_005_DEC_20
7.2	ROLLER PARTS	PM1125-21EN-000_REV_005_DEC_20
8.1	HYDRAULIC JACK, MECHANICAL JACK AND LEVELING BAR ASSEMBLY	PM1125-21EN-000_REV_005_DEC_20
8.2	HYDRAULIC JACK, MECHANICAL JACK AND LEVELING BAR ASSEMBLY	PM1125-21EN-000_REV_005_DEC_20
9.1	CE KIT AND SHORT REAR BOARD ASSEMBLY	PM1125-21EN-000_REV_005_DEC_20
9.2	CE KIT AND SHORT REAR BOARD ASSEMBLY	PM1125-21EN-000_REV_005_DEC_20

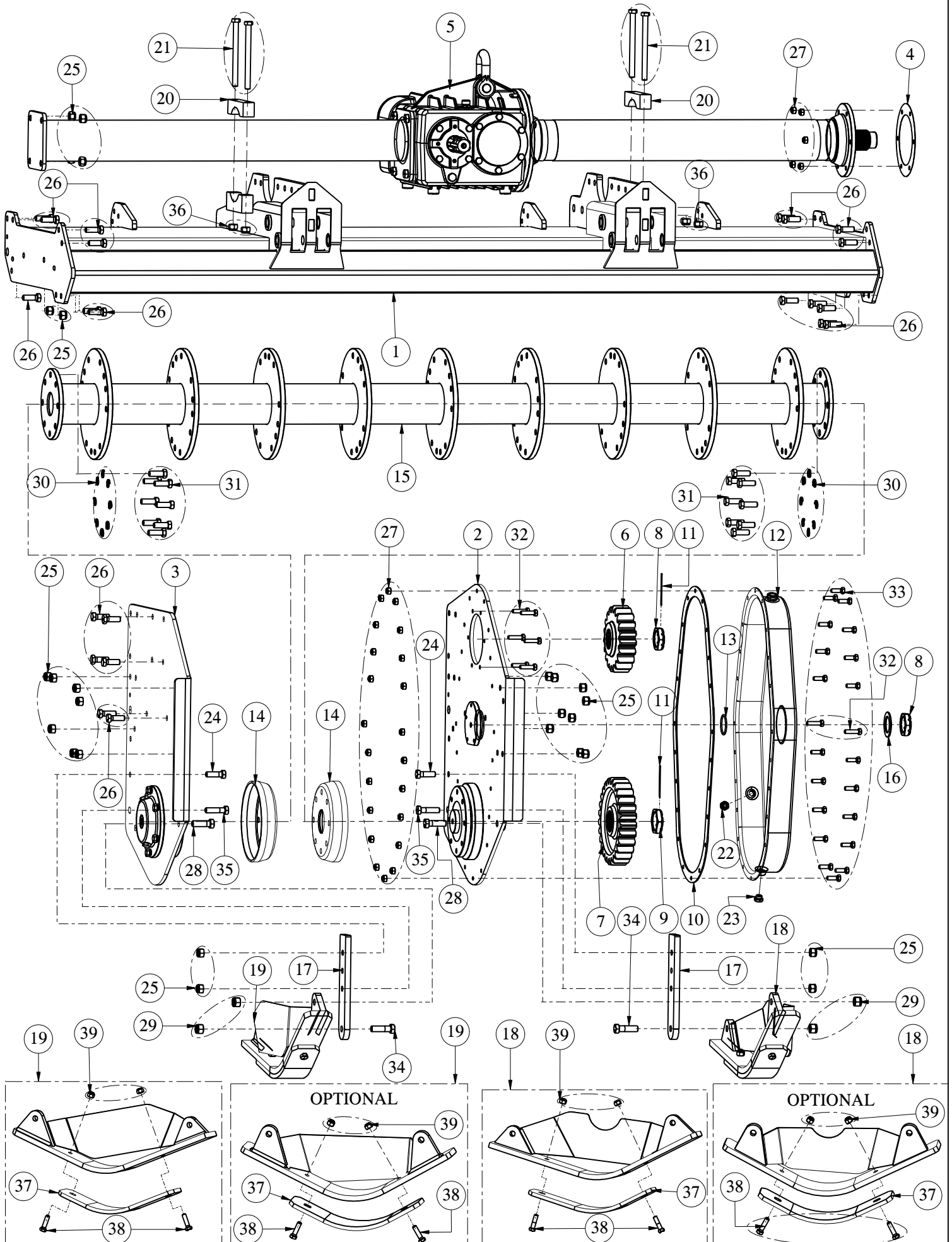
# ACCESSORIES PARTS



## ACCESSORIES PARTS

Sr. No.	Part No.	Description	Qty.
1	23077	TOP MAST WELDMENT	1
2	23083	CLEVIS, LOWER HITCH (CATEGORY II)	2
3	23085	PARKING STAND MOUNT	1
4	23084	PARKING STAND	1
5	23179	REAR BOARD 200	1
	23289	REAR BOARD 250	2
	23229	REAR BOARD 300	
6	23079	EXTENSION,REAR BOARD -TR. SIDE	1
7	23080	EXTENSION, REAR BOARD-EX. SIDE	1
8	23425	ROD,REAR BOARD WELD. 200	1
	23292	ROD,REAR BOARD WELD. 250	2
	23232	ROD,REAR BOARD WELD. 300	
9	23495	V-BOLT M14X2X140X125X30TL (8.8)	2
10	1574	NYLOCK NUT M14X2.00 (DIN-982)	5
11	14310	AIR BREATHER 1/2" BSP (1GTSR38)	1
12	23103	PIN,LOWER HITCH (CATEGORY II)	2
13	23104	PIN, TOP HITCH (CATEGORY II)	1
14	23105	PIN,LOWER HITCH ATTACHMENT	4
15	23062	LINCH PIN (D10XL45)	8
16	23067	SPRING PIN D12X40	6
17	23031	LOCKING PIN BIG	1
18	15055	R-CLIP WIRE DIA 4.00MM	1
19	1302	NYLOCK NUT M14X1.50 (DIN-982) (FOR SRT-2.0)	4
		NYLOCK NUT M14X1.50 (DIN-982) (FOR SRT-2.50, SRT-3.0)	6
20	23318	HEX BOLT M14 X 1.50 X 40 (8.8) DIN931 (FOR SRT-2.0)	4
		HEX BOLT M14 X 1.50 X 40 (8.8) DIN931 (FOR SRT-2.50, SRT-3.0)	6
21	3345	HEX BOLT M10 X 1.50 X 35 (8.8) DIN931 (FOR SRT-2.50, SRT-3.0)	1
22	23144	BRACKET, SPRING ADJUSTER SUPPORT	8
23	23145	SPRING ADJUSTER ASSEMBLY	4
24	23317	HEX BOLT M12X1.75X50(DIN931)(8.8)(ZP)	8
25	23154	BUSHING CAT-III ADAPTER	2
26	23155	PIN, TOP HITCH (CATEGORY III)	1
27	23163	SQ. PIPE PLASTIC CAP 50MM	1
28	6602	HEX BOLT M10 X 1.50 X 40 DIN 933 - 8.8 (FOR SRT-2.0)	1
		HEX BOLT M10 X 1.50 X 40 DIN 933 - 8.8 (FOR SRT-2.50, SRT-3.0)	2
29	1298	NYLOCK NUT M10X1.50 (DIN-982) (FOR SRT-2.0)	1
		NYLOCK NUT M10X1.50 (DIN-982) (FOR SRT-2.50, SRT-3.0)	3
30	1209	NYLOCK NUT M12X1.75 (DIN-982)	8
31	3339	HEX BOLT M14X1.50X45(DIN931)(8.8)(ZP)	14
32	23088	TUBE WELDMENT, SPRING ADJUSTER	1
33	23141	WASHER DIA 50 X 27 X 3	2
34	17474	HEX BOLT M12X1.75X25(DIN933)(8.8)(ZP)	2
35	8126	PLAIN WASHER 12MM (BS-4320)	4
36	23069	HEX BOLT M14X2.00X90(DIN931)(8.8)(ZP)	1
37	1272	PLAIN WASHER 14MM (BS-4320)	2
38	23142	SPACER, SPRING ADJUSTER	2
39	23143	BLOCK, SPRING ADJUSTER	1
40	23070	SPRING, REAR BOARD ADJUSTER	2
41	23068	R-CLIP D5 X L100 MM	2

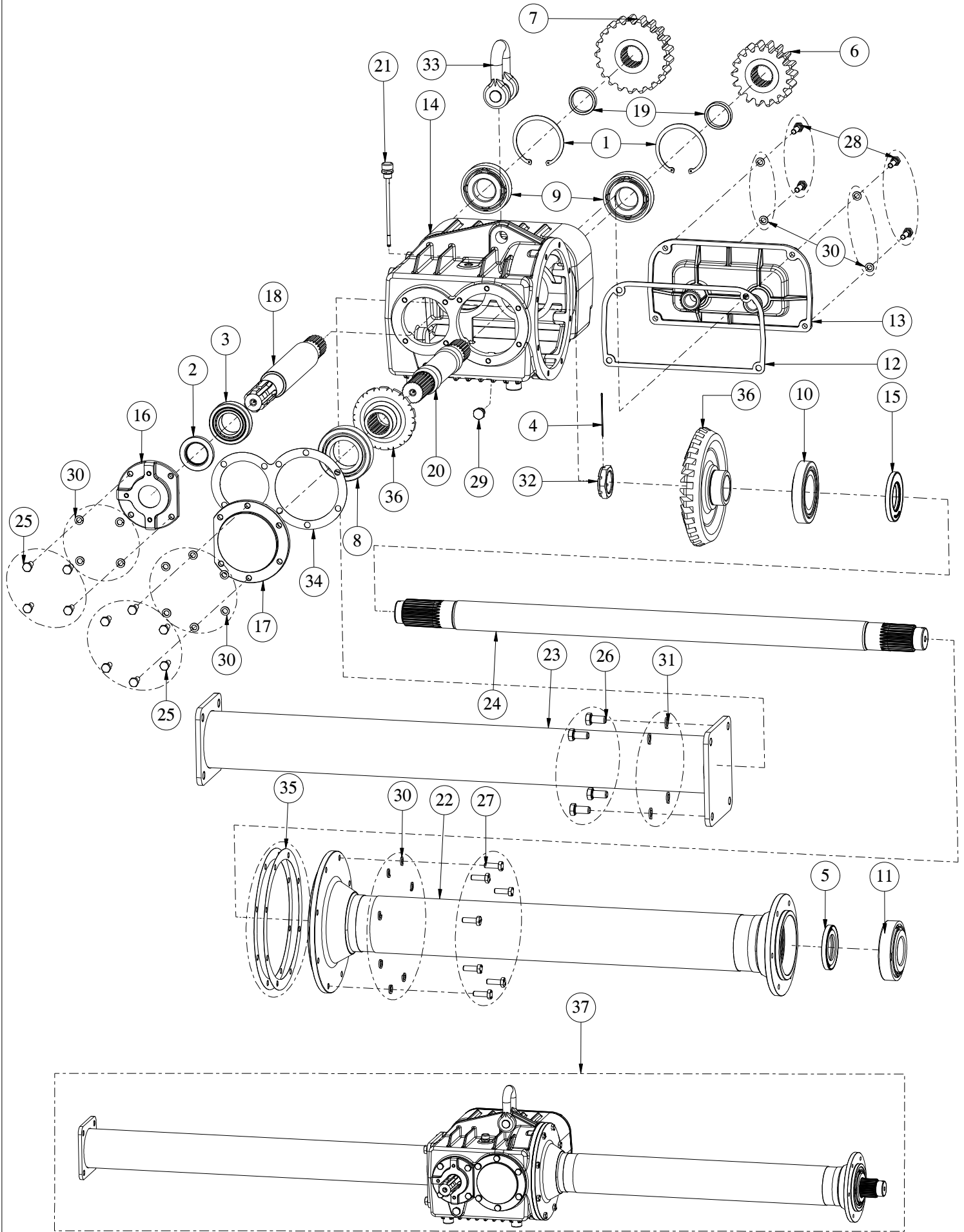
# MACHINE PARTS



# MACHINE PARTS

Sr. No.	Part No.	Description	Qty.
1	23172	FRAME WELDMENT 200 (JUMBO)	1
	23288	FRAME WELDMENT 250(JUMBO)	
	23228	FRAME WELDMENT 300(JUMBO)	
2	-	TR. SIDE ASSEMBLY (SEE TRASMISSION SIDE ASSEMBLY PAGE )	1
3	-	EX. SIDE ASSEMBLY (SEE EXTERNAL SIDE ASSEMBLY PAGE)	1
4	23061	GASKET,SHAFT BEARING MOU.TR 0.5 NA	1
5	-	GEAR BOX (SEE GEAR BOX ASSEMBLY PAGE )	1
6	23032	GEAR, DRIVING Z-19	1
7	23039	GEAR, DRIVEN Z-27	1
8	23431	CASTLE NUT M45X1.5, L=16.5	2
9	2595	CASTLE NUT 50mm	1
10	23009	GASKET SIDE DRIVE COVER	1
11	1571	COTTER PIN (DIA 3.5 X 80)	2
12	23075	COVER WELDMENT, GEAR SIDE DRIVE	1
13	20351	O" RING ID-47.2 MM X W-3.5 MM	1
14	23042	COVER, DIRT PROTECTION	2
15	-	ROTOR WELDMENT (SEE ROTOR PAGE)	1
16	23059	PLAIN WASHER 45 X 70 X 3.00	1
17	23385	SKID ADJUSTMENT	2
18	23164	SKID WELDMENT TRASMISSION SIDE	1
	23113	SKID WELDMENT (FIXED), TR. SIDE (OPTIONAL-ONLY FOR ROLLER)	
19	23165	SKID WELDMENT, EXTERNAL SIDE	1
	23114	SKID WELDMENT (FIXED), EX. SIDE (OPTIONAL- ONLY FOR ROLLER)	
20	23102	BRACKET, TUBE CLAMPING - UPPER	2
21	23063	HEX BOLT M14X2.00X180(DIN931)(8.8)(ZP)	4
22	14314	OIL LEVEL GAUGE-3/8" BSP (1GTLA21O)	1
23	14312	DRAIN CAP 3/8" BSP (1GTC02UW)	1
24	3339	HEX BOLT M14X1.50X45(DIN931)(8.8)(ZP)	2
25	1302	NYLOCK NUT M14X1.50 (DIN-982)	26
26	23318	HEX BOLT M14X1.50X40(DIN931)(8.8)(ZP)	22
27	1298	NYLOCK NUT M10X1.50 (DIN-982)	26
28	7108	HEX BOLT M16X2.00X50(IS1364-1)(8.8)(ZP)	2
29	1231	NYLOCK NUT M16X2.0 (DIN-982)	4
30	14363	SPRING WASHER M14.00(IS 3063)(ZP)	16
31	23064	HEX BOLT M14X2.00X40(DIN933)(8.8)(ZP)	16
32	3342	HEX BOLT M10X1.50X40(DIN931)(8.8)(ZP)	8
33	3340	HEX BOLT M10X1.50X30(DIN933)(8.8)(ZP)	20
34	18446	HEX BOLT M16X2.00X55(IS1364-1)(8.8)(ZP)	2
35	23384	HEX BOLT M14X1.50X55(DIN931)(8.8)(ZP)	2
36	1574	NYLOCK NUT M14X2.00 (DIN-982)	4
37	23440	SKID, PROTECTION PLATE BOTTOM	2
	23442	SKID,PROTECTION PLATE BOTTOM FIX (OPTIONAL-ONLY FOR ROLLER)	
38	3338	HEX BOLT M12X1.75X45(DIN931)(8.8)(ZP)	4
39	1209	NYLOCK NUT M12X1.75 (DIN-982)	4

# GEAR BOX ASSEMBLY PARTS

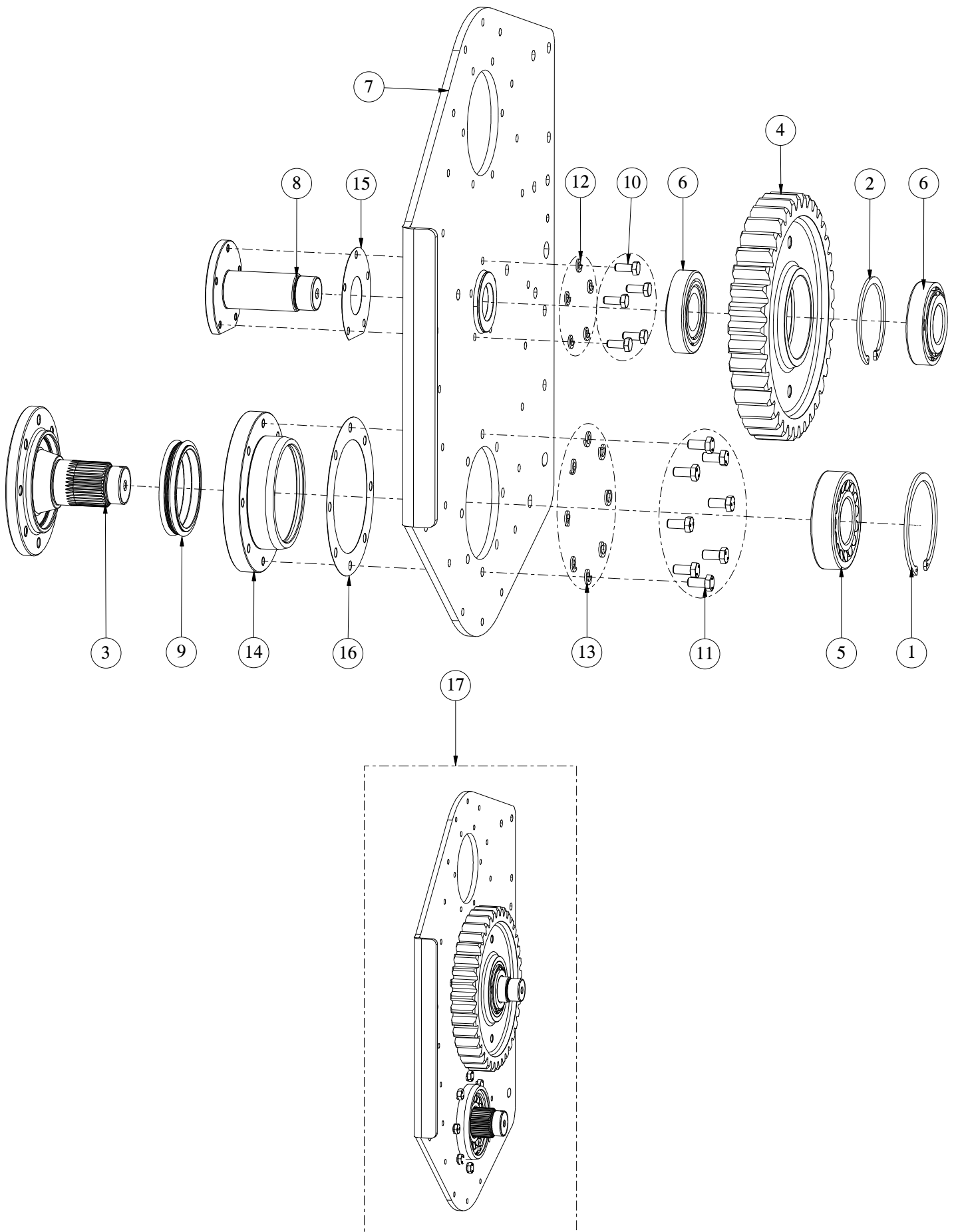




## GEAR BOX ASSEMBLY PARTS

Sr. No.	Part No.	Description	Qty.
1	1074	CIRCLIP INTERNAL 100MM	2
2	6021	OIL SEAL 45 X 70 X 10	1
3	2624	BEARING 32209	1
4	1571	COTTER PIN (DIA 3.5 X 80)	1
5	14122	OIL SEAL 55 x 90 x 10	1
6	23044	GEAR Z-18	1
	23043	GEAR Z-17	
7	23046	GEAR Z-22	1
	23047	GEAR Z-23	
8	23001	BEARING 32212	1
9	23002	BEARING 30309	2
10	23003	BEARING 30214	1
11	23004	BEARING 30311	1
12	23008	GASKET, GEARBOX COVER	1
13	23011	COVER, GEARBOX HOUSING, REAR	1
14	23012	GEAR BOX	1
15	23050	OIL SEAL 55 X 100 X 10	1
16	23072	FLANGE, INPUT SHAFT	1
17	23073	COVER, GEARBOX HOUSING FRONT	1
18	23090	SHAFT,INPUT 1-3/4" Z-6	1
19	23091	SPACER,GEAR BOX STRAIGHT GEAR	2
20	23092	PINION SHAFT	1
21	23287	DIPSTICK 153MM (M16 X 1.5) (1MLSR204)	1
22	23173	EXTENSION TUBE, TR SIDE (SRT-200)	1
	23290	EXTENSION TUBE,TR SIDE (SRT-250)	
	23230	EXTENSION TUBE ,TR SIDE (SRT-300)	
23	23174	EXTENSION TUBE, EX.SIDE (SRT-200)	1
	23291	EXTENSION TUBE,EX.SIDE (SRT-250)	
	23231	EXTENSION TUBE ,EX.SIDE (SRT-300)	
24	23175	SHAFT, OUTPUT 971 MM (SRT-200)	1
	23297	SHAFT, OUTPUT 1226 MM (SRT-250)	
	23237	SHAFT, OUTPUT 1471 MM (SRT-300)	
25	17270	HEX BOLT M10X1.50X25(DIN933)(8.8)(ZP)	10
26	17280	HEX BOLT M14X2.00X30(DIN933)(8.8)(ZP)	4
27	3340	HEX BOLT M10X1.50X30(DIN933)(8.8)(ZP)	8
28	3345	HEX BOLT M10X1.50X35(DIN931)(8.8)(ZP)	4
29	3419	3/8 BSP BOLT WITH O-RING	1
30	14361	SPRING WASHER M10.00(IS 3063)(ZP)	22
31	14363	SPRING WASHER M14.00(IS 3063)(ZP)	4
32	23431	CASTLE NUT M45X1.5, L=16.5	1
33	23484	D-SHACKLE PIN-7/8"	1
34	23049	GASKET, FRONT GEARBOX 0.5 NA	1
35	23051	GASKET,SHAFT BEARINGMOU 0.5 NA	2
36	23522	CROWN T29 PINION T14 PAIR	1
37	23176	GEAR BOX ASSMBLY (200/1000)	1
	23298	GEAR BOX ASSMBLY (250/1000)	
	23238	GEAR BOX ASSMBLY (300/1000)	

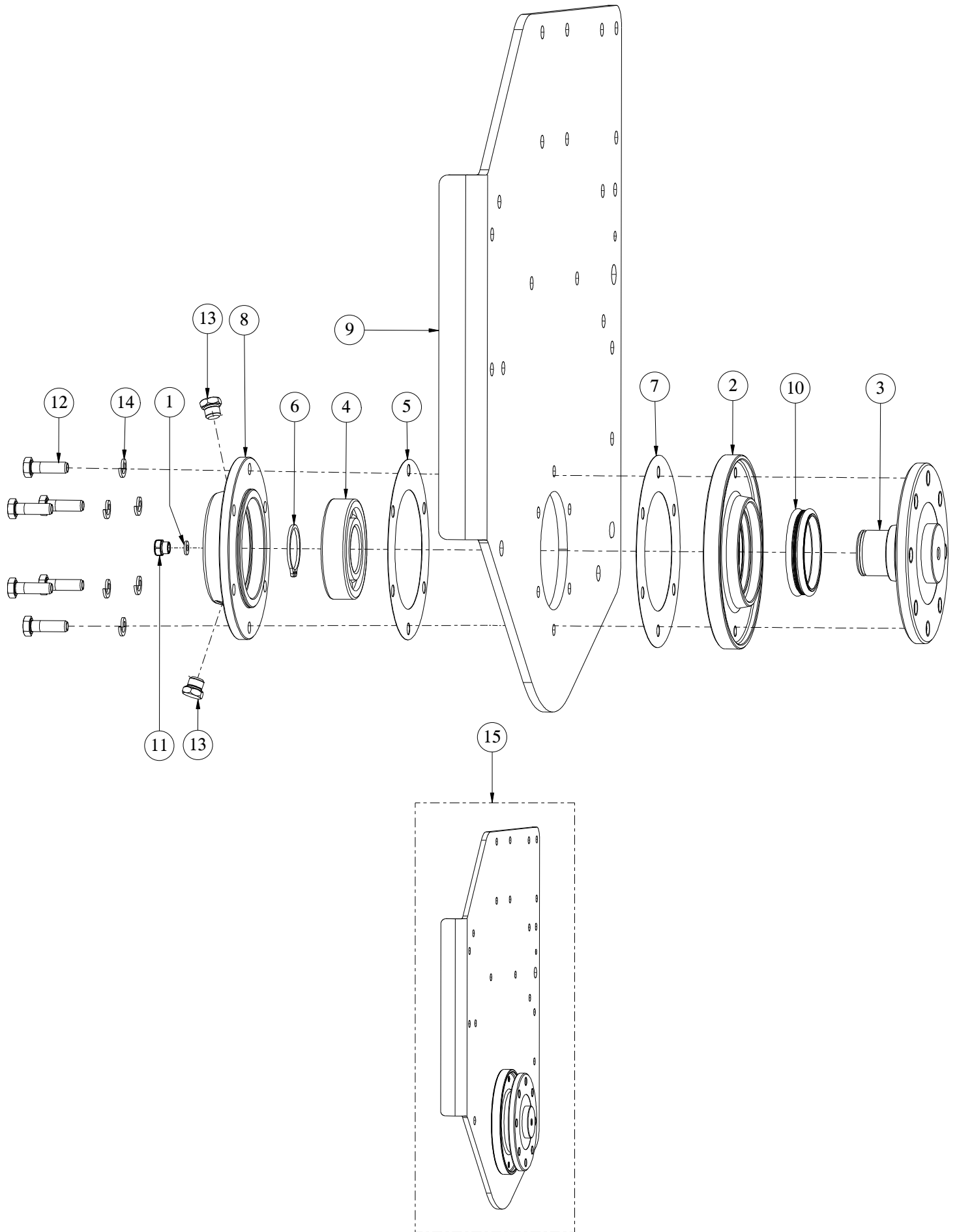
# END PLATE ASSEMBLY TRANSMISSION SIDE



## END PLATE ASSEMBLY TRASMISSION SIDE

Sr. No.	Part No.	Description	Qty.
1	2547	INTERNAL CIRCLIP 130MM	1
2	11070	INTERNAL CIRCLIP 110MM	1
3	23034	ROTOR HUB, GEAR DRIVE SIDE	1
4	23038	GEAR, IDLER Z-37	1
5	23005	BEARING 21312-E1	1
6	23006	BEARING 30310	2
7	23076	TILLER END PLATE WELD, GD SIDE	1
8	23096	PIN, IDLE GEAR	1
9	23025	DUO CONE SEAL SAP 122.5 X 104.63 X 22.5	1
10	17270	HEX BOLT M10X1.50X25(DIN933)(8.8)(ZP)	5
11	17474	HEX BOLT M12X1.75X25(DIN933)(8.8)(ZP)	8
12	14361	SPRING WASHER M10.00(IS 3063)(ZP)	5
13	14362	SPRING WASHER M12.00(IS 3063)(ZP)	8
14	23492	BEARING MOUNT,TRASMISSION SIDE	1
15	23054	GASKET, PIN IDLE GEAR 0.5 NA	1
16	23055	GASKET,ROTOR BEARING MOU.TR 0.5 NA	1
17	23097	TILLER END PLATE,TR. SIDE ASM.	1

# END PLATE ASSEMBLY EXTERNAL SIDE

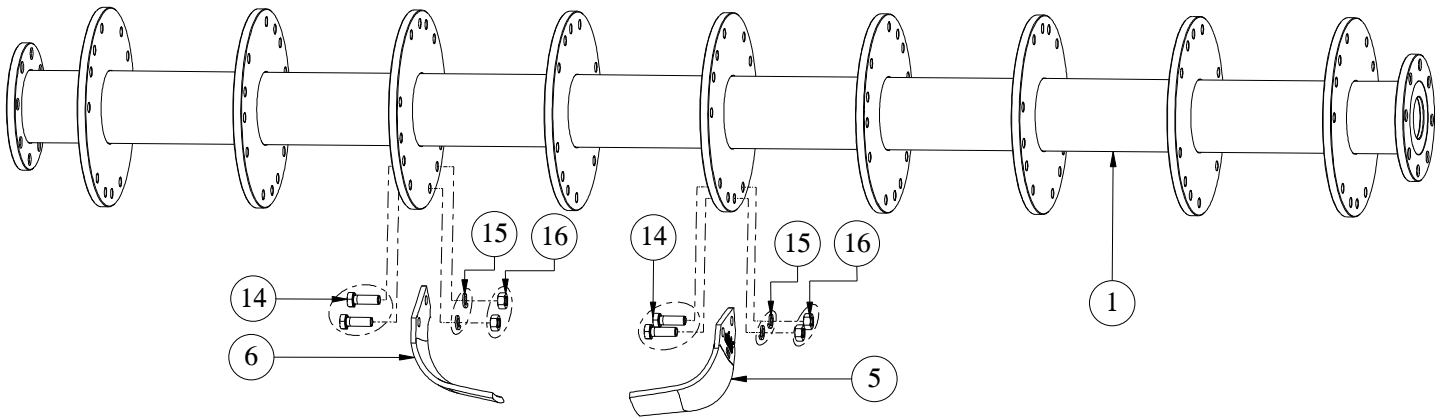


## END PLATE ASSEMBLY EXTERNAL SIDE

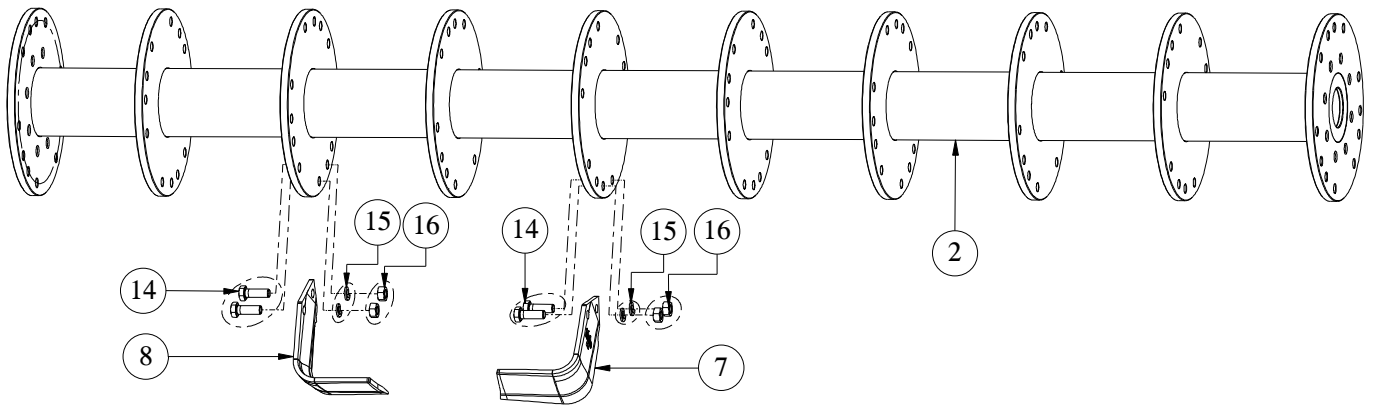
Sr. No.	Part No.	Description	Qty.
1	20877	DOWTY SEAL 1/4 BSP	1
2	23036	BEARING MOUNT,EXTERNAL SIDE	1
3	23037	ROTOR HUB,EXTERNAL SIDE	1
4	23007	BEARING 6310	1
5	23056	GASKET,ROTOR BEARINGMOU.EX 0.5 NA	1
6	23057	CIRCLIP EXTERNAL 50MM (HEAVY)	1
7	23058	GASKET,BEARING MOUNT COVER 0.5 NA	1
8	23071	BEARING MOUNT COVER-EXTERNAL SIDE	1
9	23098	TILLER END PLATE, EXTERNAL SIDE	1
10	23026	DUO CONE SEAL SAP 92.5 X 80.10 X 20	1
11	14313	OIL LEVEL GAUGE 1/4" BSP (1GTLN110)	1
12	17433	HEX BOLT M12X1.75X40(DIN931)(8.8)(ZP)	6
13	3419	3/8 BSP BOLT WITH O-RING	2
14	14362	SPRING WASHER M12.00(IS 3063)(ZP)	6
15	23099	TILLER END PLATE,EX. SIDE ASM.	1

# ROTOR PARTS

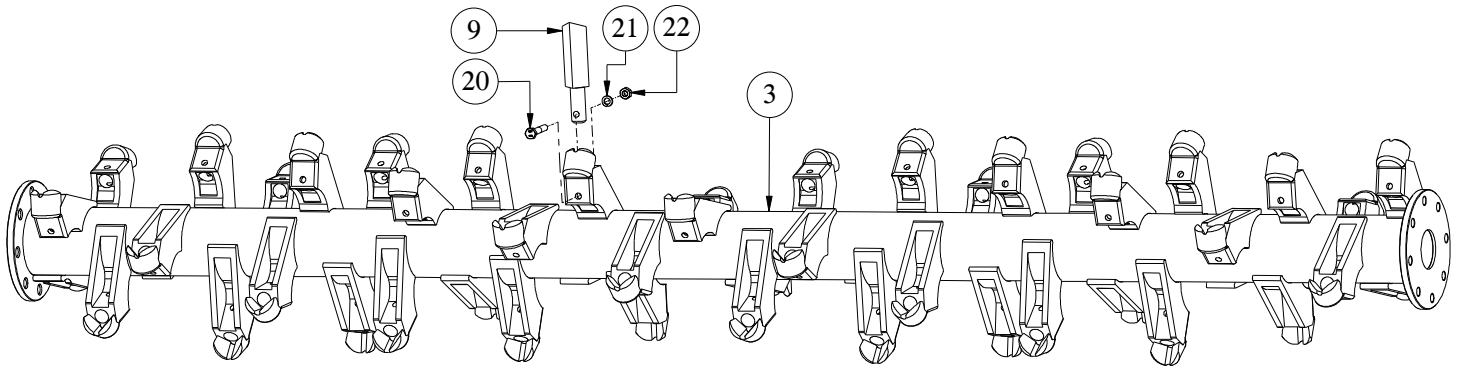
## ROTOR BLADE - CUREVED TYPE



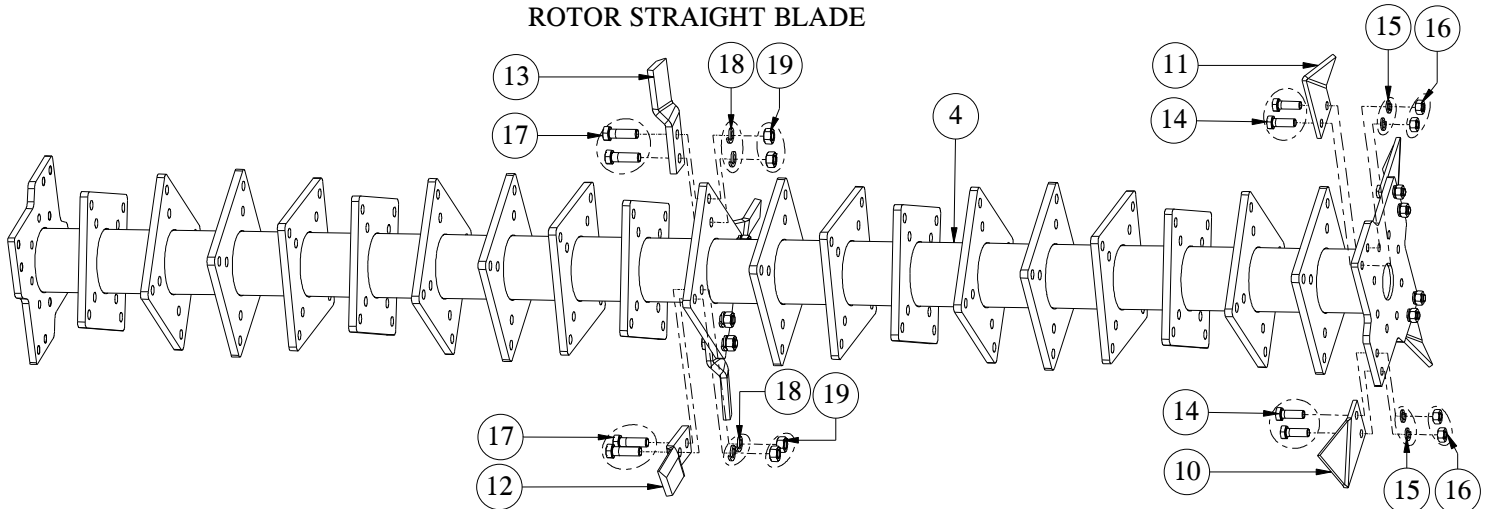
## ROTOR BLADE - L TYPE



## ROTOR SPIKE BLADE



## ROTOR STRAIGHT BLADE

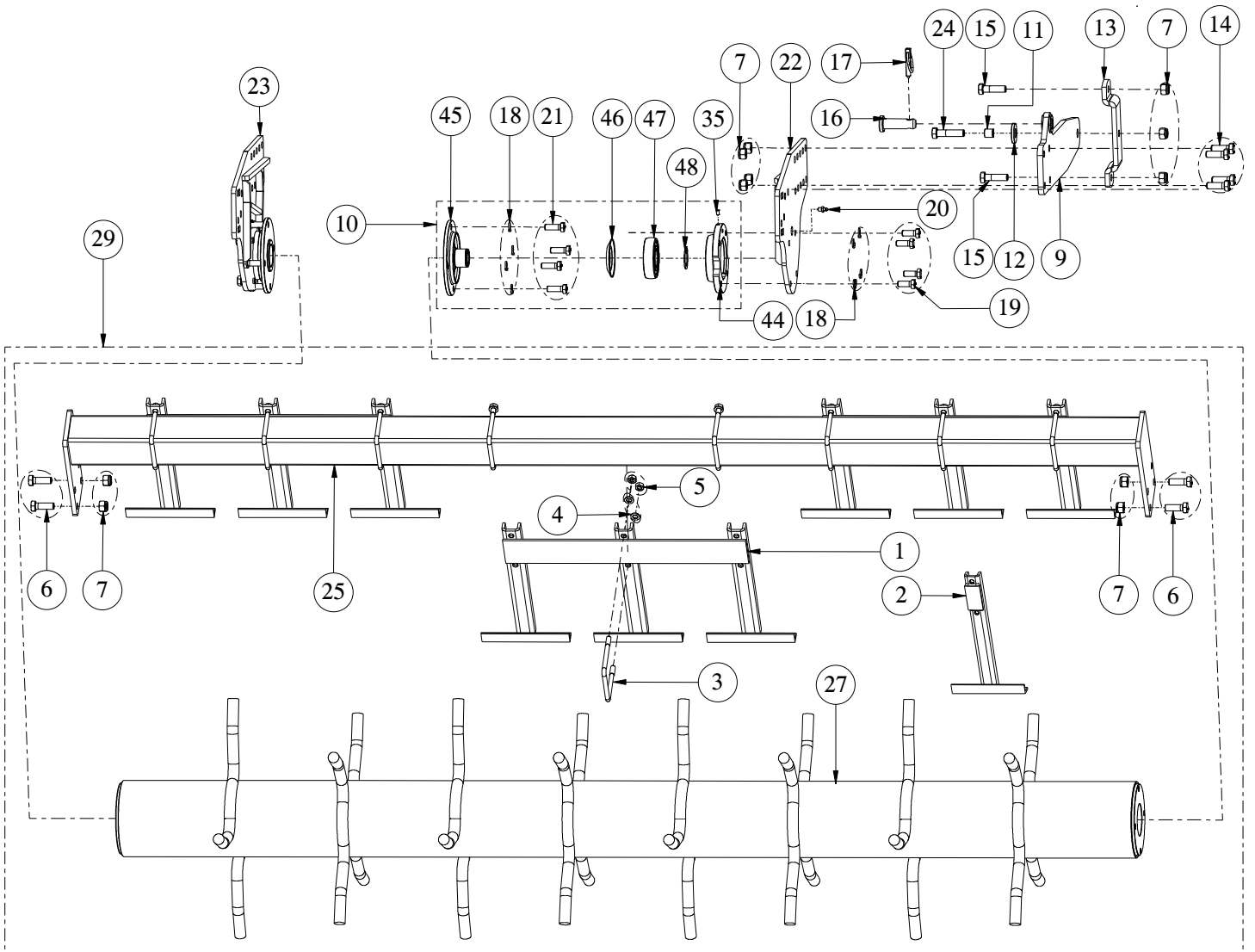


## ROTOR PARTS

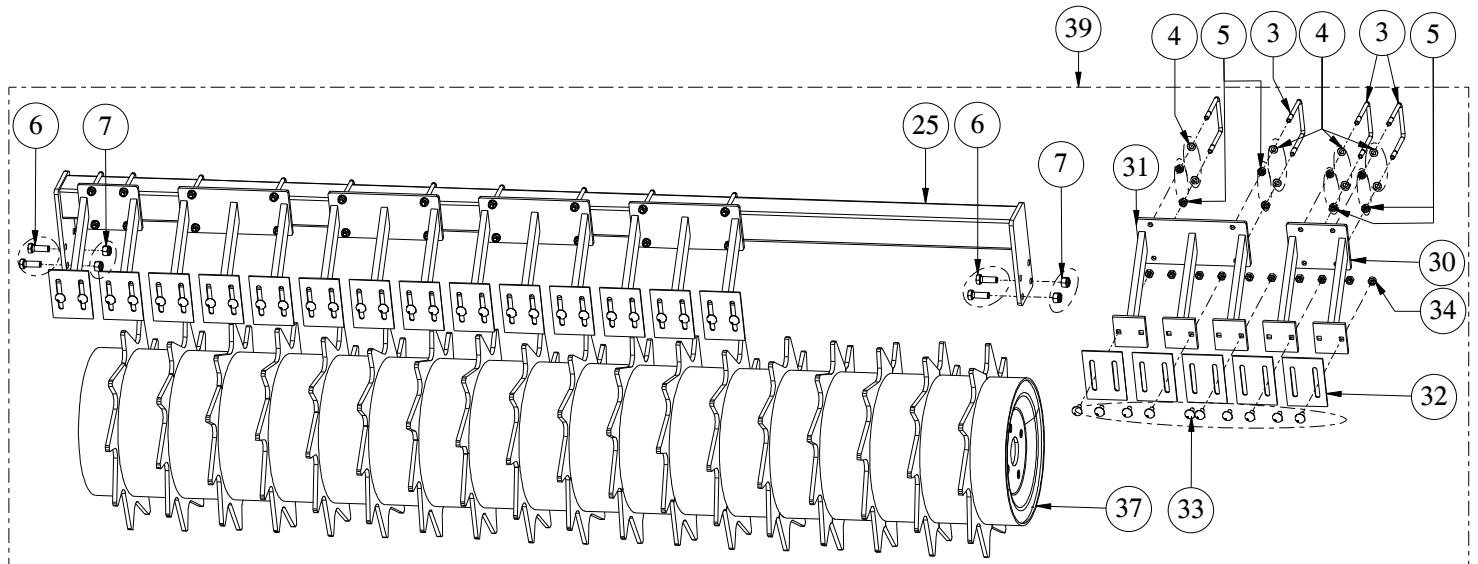
Sr. No.	Part No.	Description	Qty.
1	23177	ROTOR WELDMENT STANDARD (SRT-200)	1
	23293	ROTOR WELDMENT STANDARD (SRT-250)	
	23233	ROTOR WELDMENT STANDARD (SRT-300)	
2	23178	ROTOR WELDMENT INWARD (SRT-200)	1
	23294	ROTOR WELDMENT INWARD (SRT-250)	
	23234	ROTOR WELDMENT INWARD (SRT-300)	
3	23444	SPIKE ROTOR WELDMENT (SRT-200)	1
	23295	SPIKE ROTOR WELDMENT (SRT-250)	
	23235	SPIKE ROTOR WELDMENT (SRT-300)	
4	23446	BLADE ROTOR WELDMENT (SRT-200)	1
	23296	BLADE ROTOR WELDMENT (SRT-250)	
	23236	BLADE ROTOR WELDMENT (SRT-300)	
5	23159	BLADE CURVED LH (90X8) (180X135)	AS REQ.
6	23160	BLADE CURVED RH (90X8) (180X135)	AS REQ.
7	1374	BLADE L- TYPE LH INDIAN	AS REQ.
8	3029	BLADE L- TYPE RH INDIAN	AS REQ.
9	23224	SPIKE BLADE SQ. 30X30	AS REQ.
10	23380	EXTERNAL BLADE LH (BLADES ROTOR)	AS REQ.
11	23379	EXTERNAL BLADE RH (BLADES ROTOR)	AS REQ.
12	23225	STRAIGHT BLADE 50X12 LH	AS REQ.
13	23226	STRAIGHT BLADE 50X12 RH	AS REQ.
14	14337	HEX BOLT M14X1.50X40(DIN931)(10.9)(ZP)	AS REQ.
15	14363	SPRING WASHER M14.00(IS 3063)(ZP)	AS REQ.
16	14338	HEX NUT M14 X 1.50 (10.9) DIN934	AS REQ.
17	7039	HEX BOLT M16X1.50X50(IS1364-1)(10.9)(ZP)	AS REQ.
18	14364	SPRING WASHER M16.00(IS 3063)(ZP)	AS REQ.
19	6582	HEX NUT M16X1.50(DIN 934)(8)(ZP)	AS REQ.
20	23286	HEX BOLT M10 X 1.25 X 60 (10.9) DIN 960	AS REQ.
21	14361	SPRING WASHER M10.00(IS 3063)(ZP)	AS REQ.
22	6556	HEX NUT M10X1.25(DIN 934)(8)(ZP)	AS REQ.

# ROLLER PARTS

## SPIKE ROLLER ASM DIA.-540



## PACKER ROLLER DIA.-500

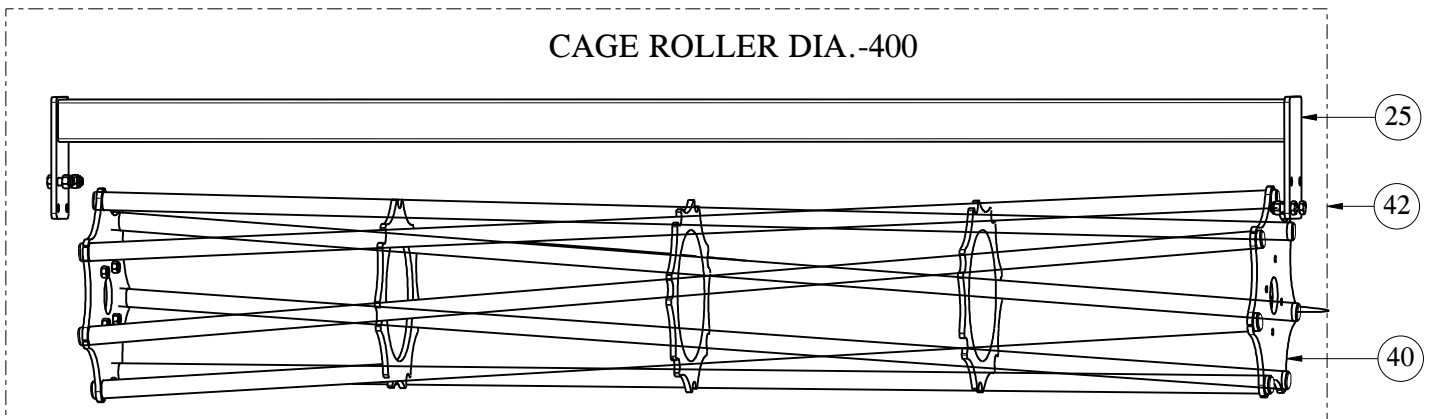
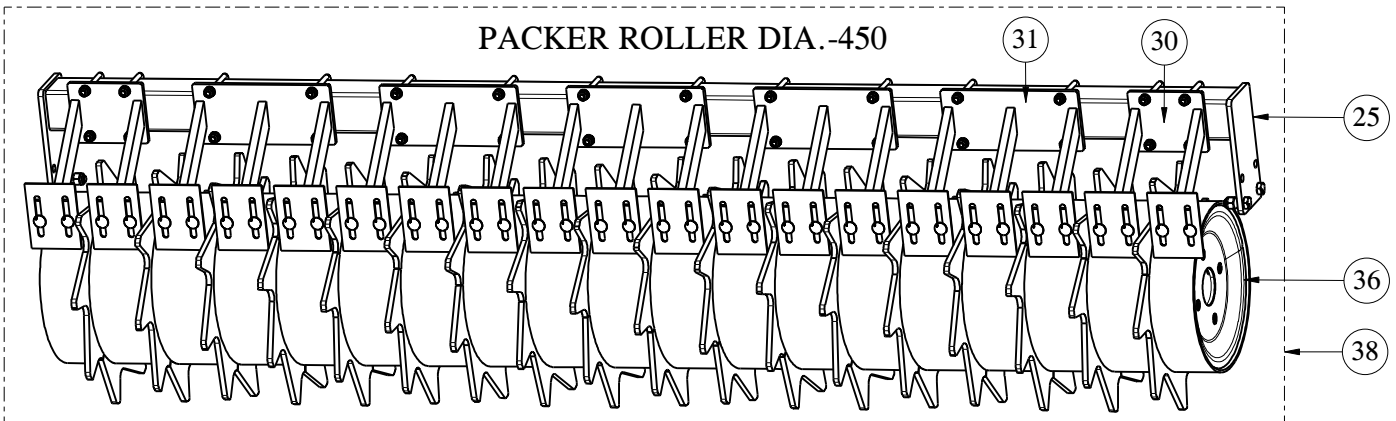
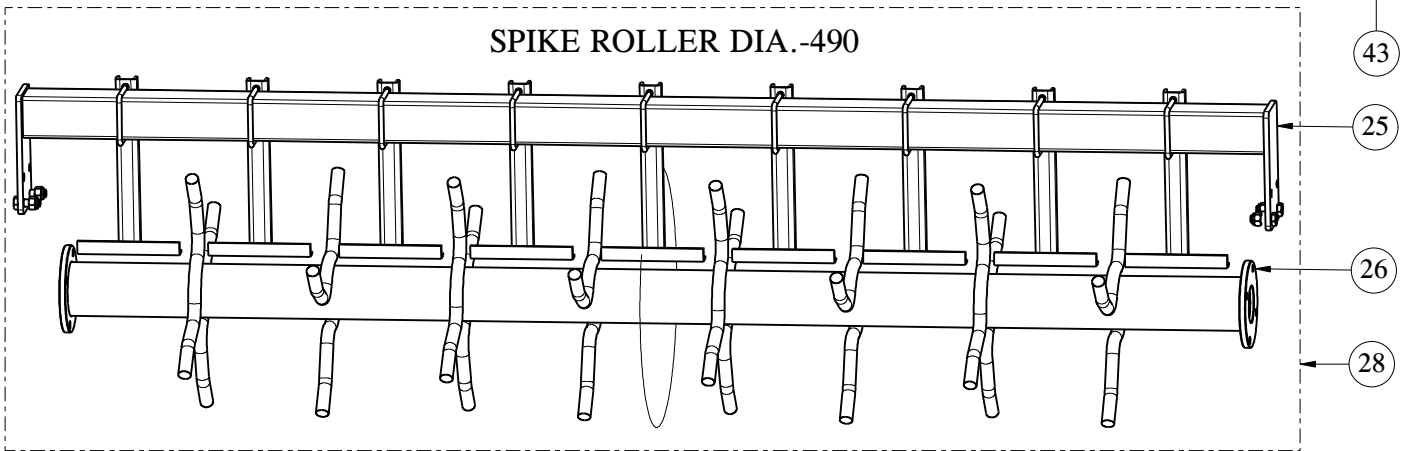
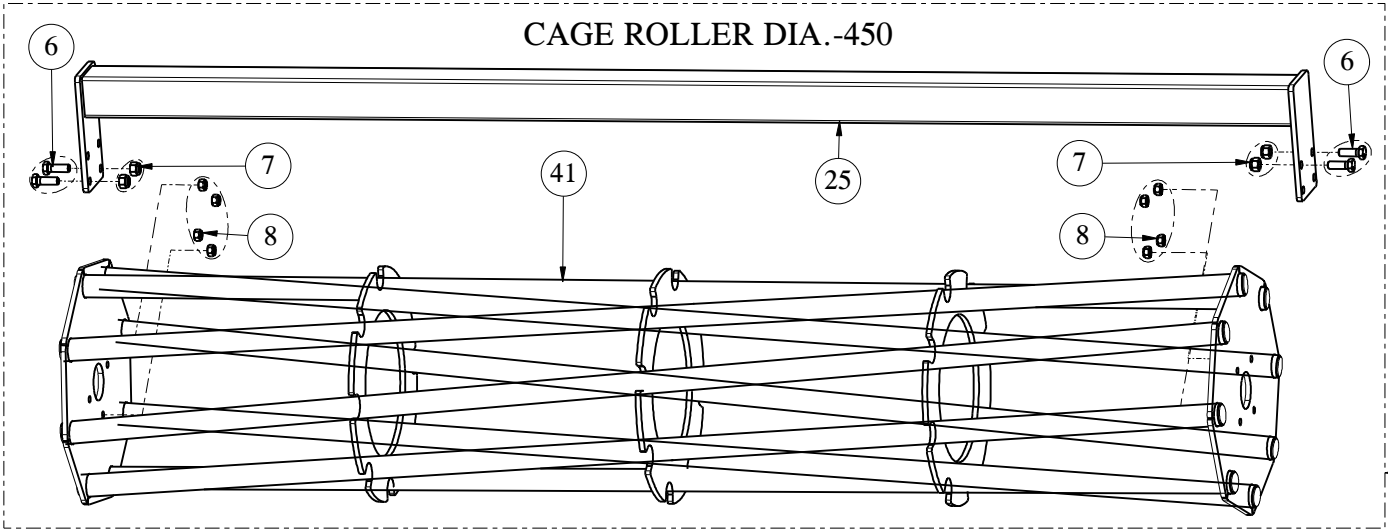
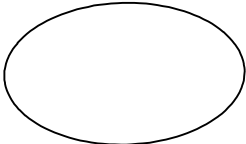




## ROLLER PARTS

Sr. No.	Part No.	Description	Qty.
1	23265	SCRAPER WELDMENT, 3-UNITS SRT-200	2
		SCRAPER WELDMENT, 3-UNITS SRT-250	3
		SCRAPER WELDMENT, 3-UNITS SRT-300	4
2	23308	SCRAPER WELDMENT, 1-UNITS SRT-250	1
3	7387	U-BOLT M10X1.25X91X103X25TL (8.8)	AS REQ.
4	8078	PLAIN WASHER 10MM (BS-4320)	AS REQ.
5	6556	HEX NUT M10X1.25(DIN 934)(8)(ZP)	AS REQ.
6	23318	HEX BOLT M14X1.50X40(DIN931)(8.8)(ZP)	AS REQ.
7	1302	NYLOCK NUT M14X1.50 (DIN-982)	AS REQ.
8	6663	SELF LOCK NUT M12 X 1.25 DIN 980V (SPIKE ROLLER ) (SRT-250,SRT-300)	8
		SELF LOCK NUT M12 X 1.25 DIN 980V (CAGE ROLLER)	
9	23242	ROLLER ARM WELDMENT	2
10	23284	MOUNTING SUPPORT ROLLER COMP.	2
11	23020	BUSHING, ROLLER ARM	2
12	23244	SPACER - 44 X 19 X 6	2
13	23119	BRACKET, ROLLER ARM	2
14	3341	HEX BOLT M14X1.50X40(DIN933)(8.8)(ZP)	8
15	3344	HEX BOLT M14X1.50X50(DIN931)(8.8)(ZP)	4
16	23381	PIN, JACK MOUNTING	2
17	23062	LINCH PIN (D10XL45)	2
18	1306	SPRING WASHER M12.00(IS 3063)	16
19	6587	HEX BOLT M12 X 1.25 X 30 DIN 961 - 8.8	8
20	6559	GREASE NIPPLE M8 X 1	2
21	6589	HEX BOLT M12 X 1.25 X 35 DIN 961 - 8.8	8
22	23388	RIGHT END PLATE WELD, FRAME ROLL.	1
23	23389	LEFT END PLATE WELD, FRAME ROLL.	1
24	23382	HEX BOLT M14X1.50X60(DIN931)(8.8)(ZP)	2
25	23409	TUBE WELDMENT SCRAPER (SRT-200)	1
	23306	TUBE WELDMENT SCRAPER (SRT-250)	
	23263	TUBE WELDMENT SCRAPER (SRT-300)	
26	23412	SPIKE ROLLER WELD D490 (SRT-200)	1
	23305	SPIKE ROLLER WELD D490 (SRT-250)	
	23262	SPIKE ROLLER WELD D490 (SRT-300)	
27	23410	SPIKE ROLLER WELD D540 (SRT-200)	1
	23307	SPIKE ROLLER WELD D540 (SRT-250)	
	23264	SPIKE ROLLER WELD D540 (SRT-300)	
28	23413	KIT SPIKE ROLLER ASM D490 (SRT-200)	1
	23309	KIT SPIKE ROLLER ASM D490 (SRT-250)	
	23266	KIT SPIKE ROLLER ASM D490 (SRT-300)	
29	23411	KIT SPIKE ROLLER ASM D540 (SRT-200)	1
	23310	KIT SPIKE ROLLER ASM D540 (SRT-250)	
	23267	KIT SPIKE ROLLER ASM D540 (SRT-300)	
30	23269	SCRAPER WELDMENT (DOUBLE SCRAPER) (SRT-200)	1
		SCRAPER WELDMENT (DOUBLE SCRAPER) (SRT-250)	3
		SCRAPER WELDMENT (DOUBLE SCRAPER) (SRT-300)	2

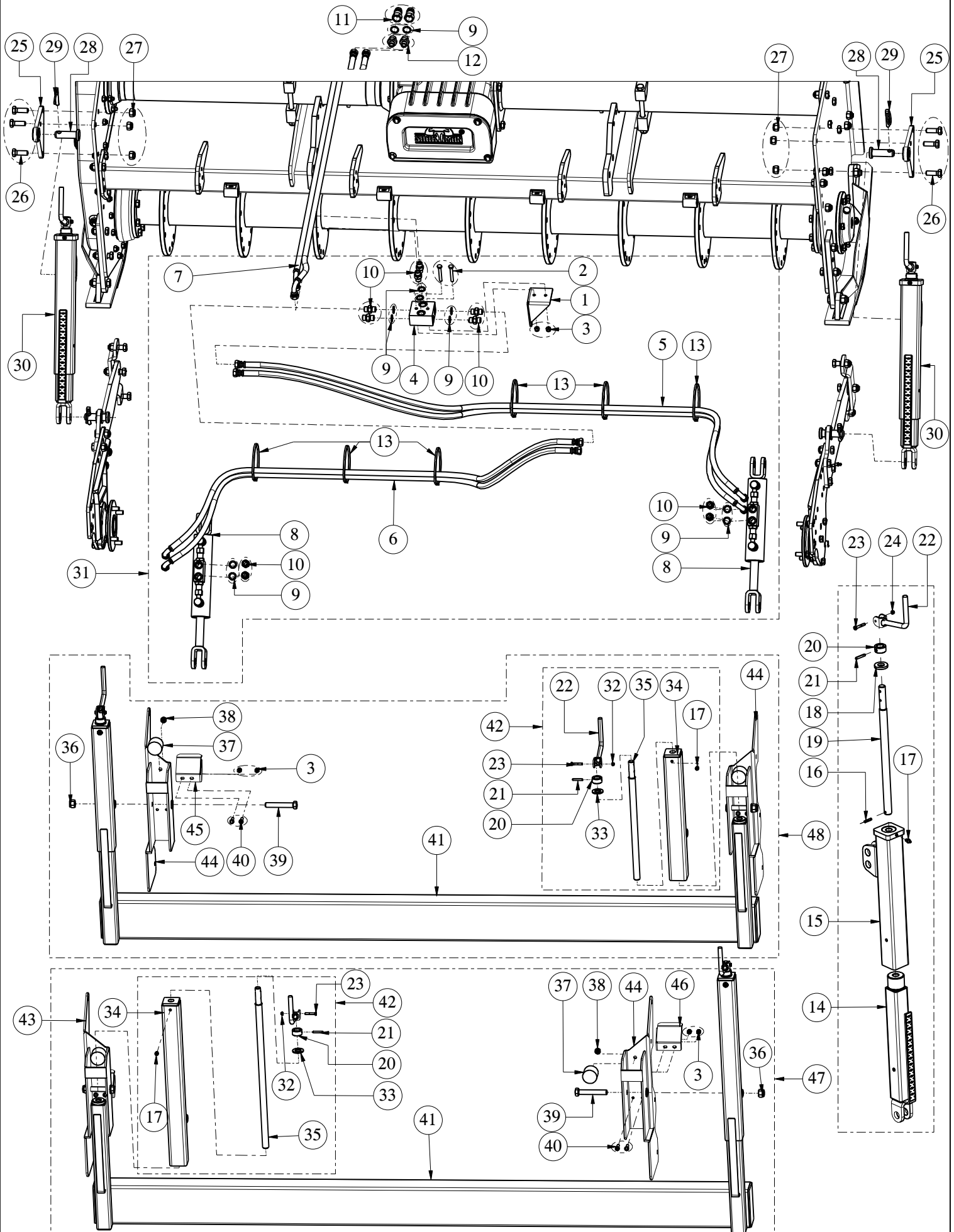
# ROLLER PARTS



## ROLLER PARTS

Sr. No.	Part No.	Description	Qty.
31	23270	SCRAPER WELDMENT (TRIPLE SCRAPER) (SRT-200)	5
		SCRAPER WELDMENT (TRIPLE SCRAPER) (SRT-250)	5
		SCRAPER WELDMENT (TRIPLE SCRAPER) (SRT-300)	7
32	23271	SCRAPER PLATE, PACKER ROLLER (SRT-200)	17
		SCRAPER PLATE, PACKER ROLLER (SRT-250)	21
		SCRAPER PLATE, PACKER ROLLER (SRT-300)	25
33	8175	RO HD SQ NECK BOLT M10 X 1.5 X 25 FT-8.8 SRT-200	AS REQ.
34	1298	NYLOCK NUT M10X1.50 (DIN-982) SRT-200	AS REQ.
35	12090	GRUB SCREW M6 X 1 X 10	2
36	23417	PACKER ROLLER WELD D450 (SRT-200)	1
	23311	PACKER ROLLER WELD D450 (SRT-250)	
	23268	PACKER ROLLER WELD D450 (SRT-300)	
37	23419	PACKER ROLLER WELD D500 (SRT-200)	1
	23322	PACKER ROLLER WELD D500 (SRT-250)	
	23320	PACKER ROLLER WELD D500 (SRT-300)	
38	23418	KIT PACKER ROLLER ASM. D450 (SRT-200)	1
	23312	KIT PACKER ROLLER ASM. D450 (SRT-250)	
	23272	KIT PACKER ROLLER ASM. D450 (SRT-300)	
39	23420	KIT PACKER ROLLER ASM. D500 (SRT-200)	1
	23323	KIT PACKER ROLLER ASM. D500 (SRT-250)	
	23321	KIT PACKER ROLLER ASM. D500 (SRT-300)	
40	23423	CAGE ROLLER WELDMENT D400 (SRT-200)	1
	23313	CAGE ROLLER WELDMENT D400 (SRT-250)	
	23273	CAGE ROLLER WELDMENT D400 (SRT-300)	
41	23421	CAGE ROLLER WELDMENT D450 (SRT-200)	1
	23329	CAGE ROLLER WELDMENT D450 (SRT-250)	
	23327	CAGE ROLLER WELDMENT D450 (SRT-300)	
42	23424	KIT CAGE ROLLER ASM D400 (SRT-200)	1
	23314	KIT CAGE ROLLER ASM D400 (SRT-250)	
	23274	KIT CAGE ROLLER ASM D400 (SRT-300)	
43	23422	KIT CAGE ROLLER ASM D450 (SRT-200)	1
	23330	KIT CAGE ROLLER ASM D450 (SRT-250)	
	23328	KIT CAGE ROLLER ASM D450 (SRT-300)	
44	23281	BEARING SUPPORT	2
45	23282	HUB SUPPORT ROLLER	2
46	23283	DUST RING	2
47	23386	Y-BEARING 6308-2RS1	2
48	8027	CIRCLIP EXTERNAL 40MM	2

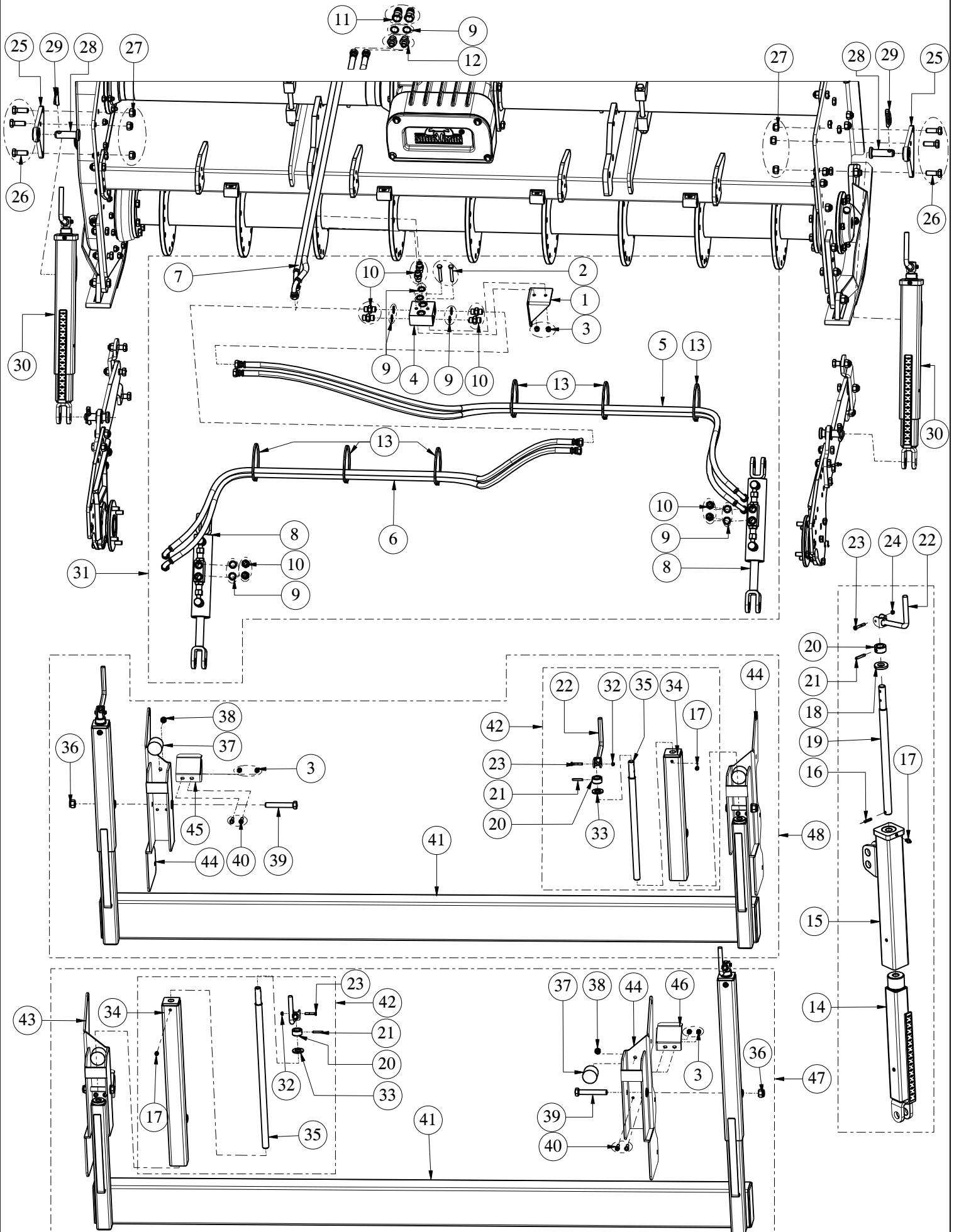
# HYDRAULIC JACK, MECHANICAL JACK AND LEVELING BAR ASSEMBLY



## HYDRAULIC JACK, MECHANICAL JACK AND LEVELING BAR ASSEMBLY

Sr. No.	Part No.	Description	Qty.
1	23153	BRACKET, HYDRAULIC VALVE SUPPORT	1
2	19164	HEX BOLT M8X1.25X60(ISO1364-2)(8.8)(ZP)	2
3	1297	NYLOCK NUT M8X1.25 (DIN-982)	2
		NYLOCK NUT M8X1.25 (DIN-982) (FOR LEVELING BAR)	4
4	23015	HYD. DISTRIBUTOR VALVE 3/8"	1
5	23016	HYD. HOSE R1AT, F90° 3/8" FD3/8", L=2300	2
6	23018	HYD. HOSE R1AT, F90° 3/8"-FD 3/8", L=1900	2
7	23019	HYD. HOSE R1AT F90° 3/8"-FD 3/8", L=1600	2
8	23223	HYD. CYLINDER 385X535 WITH CHECK VALVE	2
9	19007	DOWTY SEAL (3/8 BSP)	12
10	9553	NIPPLE 3/8" BSP STD	10
11	9563	HYD. MALE COUPLING 1/2" BSP	2
12	18241	HEX NIPPLE (1/2" X 3/8" STD)	2
13	23390	CABLE TIE 400MM	4
14	23276	MECH. JACK WELDMENT, INTERNAL	2
15	23277	MECH. JACK WELDMENT, EXTERNAL	2
16	23278	SPRING PIN D6X26	2
17	6559	GREASE NIPPLE M8 X 1	2
18	23391	WASHER 40 X 19 X 6 MM	2
19	23392	ADJUSTING THREADED BAR	2
20	6550	BUSHING MECH. JACK (SPH-120)	2
21	25195	DOWEL PIN 6 X 36 (ISO8752)	2
22	6549	HANDLE WELD. (SPH-120)	2
23	6601	HEX BOLT M6X1.00X35(DIN931)(8.8)(ZP)	2
24	6583	HEX NUT M6X1.00(DIN 934)(8)(ZP)	2
25	23245	MOUNTING, JACK COUPLING WELD.	2
26	23318	HEX BOLT M14X1.50X40(DIN931)(8.8)(ZP)	6
27	1302	NYLOCK NUT M14X1.50 (DIN-982)	6
28	23381	PIN, JACK MOUNTING	2
29	23062	LINCH PIN (D10XL45)	2
30	23279	MECHANICAL JACK ASSEMBLY	2

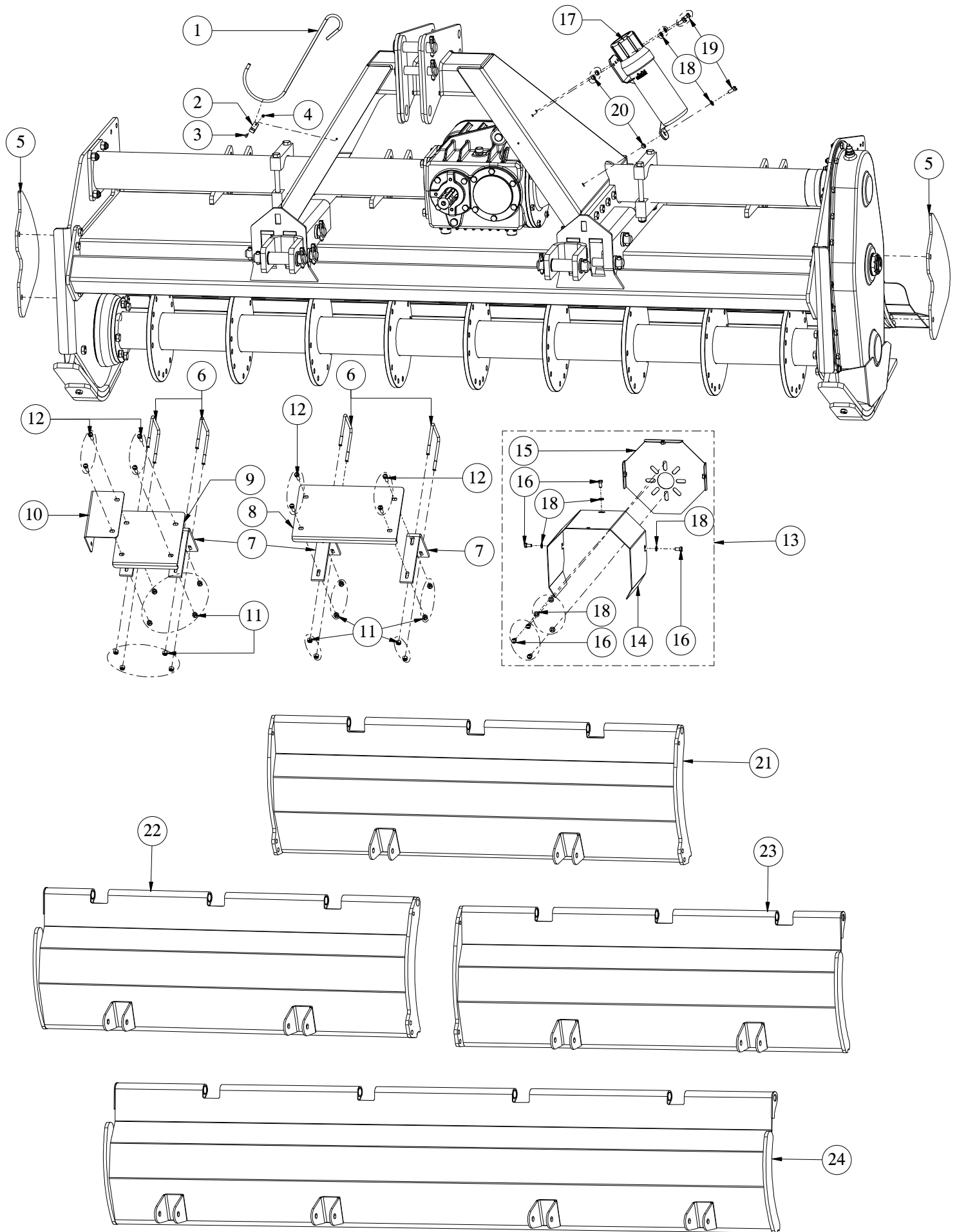
# HYDRAULIC JACK, MECHANICAL JACK AND LEVELING BAR ASSEMBLY



## HYDRAULIC JACK, MECHANICAL JACK AND LEVELING BAR ASSEMBLY

Sr. No.	Part No.	Description	Qty.
31	23280	KIT HYD. JACK ASM. 300	1
	23326	KIT HYD. JACK ASM. 250	
32	19140	NYLOCK NUT M6X1.00 (DIN-982)	2
33	17040	PLAIN WASHER 20MM (BS-4320)	2
34	23247	MECHANICAL JACK WELD,UPPAR L=470	2
	23253	MECHANICAL JACK WELD,UPPAR L=610	
35	23249	THEADED BAR, MECH. JACK L=470	2
	23254	THEADED BAR, MECH. JACK L=610	
36	1231	NYLOCK NUT M16X2.0 (DIN-982)	2
37	6546	BUMPER M10X1.5X40 (SPH-120)	2
38	1298	NYLOCK NUT M10X1.50 (DIN-982)	2
39	2208	HEX BOLT M16X2.00X100(IS1364-2)(8.8)(ZP)	2
40	8171	HEX BOLT M8X1.25X25(IS1364-2)(8.8)(ZP)	4
41	23414	LEVELING BAR WELDMENT (SRT-200)	1
	23302	LEVELING BAR WELDMENT (SRT-250)	
	23246	LEVELING BAR WELDMENT (SRT-300)	
42	23252	MECHANICAL JACK ASM. UPPAR L=470	2
	23255	MECHANICAL JACK ASM. UPPAR L=610	
43	23256	LEVELING BAR SUPPORT, WELD. RH	1
44	23257	LEVELING BAR SUPPORT, WELD. LH	1
45	23259	PROTECTION, LEVELING BAR RH	1
46	23258	PROTECTION, LEVELING BAR LH	1
47	23416	REAR LEVELING BAR ASM (MECH) (SRT-200)	1
	23303	REAR LEVELING BAR ASM (MECH) (SRT-250)	
	23260	REAR LEVELING BAR ASM (MECH) (SRT-300)	
48	23415	REAR LEVEING BAR ASM (HYD) (SRT-200)	1
	23304	REAR LEVEING BAR ASM (HYD) (SRT-250)	
	23261	REAR LEVEING BAR ASM (HYD) (SRT-300)	

# CE KIT AND SHORT REAR BOARD ASSEMBLY



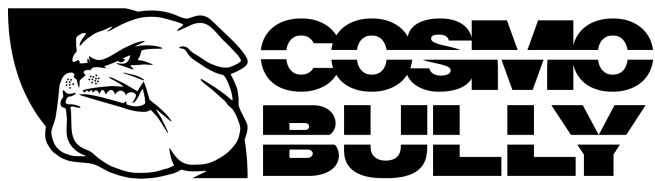


## CE KIT AND SHORT REAR BOARD ASSEMBLY

Sr. No.	Part No.	Description	Qty.
1	23146	DRIVELINE HOOK 370MM	1
2	23147	PLATE,HOOK HOLDING	1
3	35098	HEX BOLT M4X0.75X15(IS1364-2)(8.8)(ZP)	1
4	24529	NYLOCK NUT M4 X 0.75 - SCH	1
5	23148	CE SIDE SHIELD	2
6	23496	U-BOLT M8X1.25X100X114X30TL (8.8) (SRT-200)	6
		U-BOLT M8X1.25X100X114X30TL (8.8) (SRT-250)	8
		U-BOLT M8X1.25X100X114X30TL (8.8) (SRT-300)	10
7	23149	BRACKET,FRONT BARRIER (SRT-200)	10
		BRACKET,FRONT BARRIER (SRT-250)	6
		BRACKET,FRONT BARRIER (SRT-300)	6
		PLATE,BARRIER FRONT (L=330) (SRT-250)	2
		PLATE,BARRIER FRONT (L=330) (SRT-300)	4
9	23325	PLATE,BARRIER FRONT (L=205) (SRT-200)	3
		PLATE,BARRIER FRONT (L=205) (SRT-250)	2
		PLATE,BARRIER FRONT (L=205) (SRT-300)	1
10	23151	PLATE,END,FRONT BARRIER	2
11	1297	NYLOCK NUT M8X1.25 (DIN-982) (SRT-200)	24
		NYLOCK NUT M8X1.25 (DIN-982) (SRT-250)	32
		NYLOCK NUT M8X1.25 (DIN-982) (SRT-300)	40
12	8171	HEX BOLT M8X1.25X25(IS1364-2)(8.8)(ZP) (SRT-200)	12
		HEX BOLT M8X1.25X25(IS1364-2)(8.8)(ZP) (SRT-250)	16
		HEX BOLT M8X1.25X25(IS1364-2)(8.8)(ZP) (SRT-300)	20
13	23140	PTO SHAFT GUARD ASSEMBLY	1
14	23387	PTO SHAFT GUARD	1
15	23168	PTO SHAFT GUARD MOUNT PLATE COMP	1
16	8190	HEX BOLT M8X1.25X15(IS1364-2)(8.8)(ZP)	9
17	26030	MANUAL BOX COVER 1/2	1
18	8064	PLAIN WASHER 8MM (BS-4320)	9
19	8040	HEX BOLT M8X1.25X20(IS1364-2)(8.8)(ZP)	3
20	8181	HEX NUT M8X1.25(IS 1363)(8)(ZP)	3
21	23426	SHORT REAR BOARD WELD. ROLLER (SRT-200)	2
	23299	SHORT REAR BOARD WELD. ROLLER (SRT-250)	
	23239	SHORT REAR BOARD WELD. ROLLER (SRT-300)	
22	23300	SHORT REAR BOARD WELD. LEV.LH (SRT-250)	1
	23240	SHORT REAR BOARD WELD. LEV.LH (SRT-300)	
23	23301	SHORT REAR BOARD WELD. LEV.RH (SRT-250)	1
	23241	SHORT REAR BOARD WELD. LEV.RH (SRT-300)	
24	23427	SHORT REAR BOARD WELD. LEV. (SRT-200)	1







**Farm Implements**

**12 Tarmac Way Pakenham Victoria Australia 3810**

**T: +61 3 9706 5166**

**F: +61 3 9706 5050**

**E: [admin@farmimplements.com.au](mailto:admin@farmimplements.com.au)**

**W: [farmimplements.com.au](http://farmimplements.com.au)**

**ACN 006 050 657 | ABN 59 918 752 500**