
CENTRIFUGAL PULL TYPE FERTILIZER SPREADER MOD. PTB

USER AND MAINTENANCE MANUAL

 Carefully read the manual before using the machine 

8. EXPLODED VIEW TABLES

Table 01

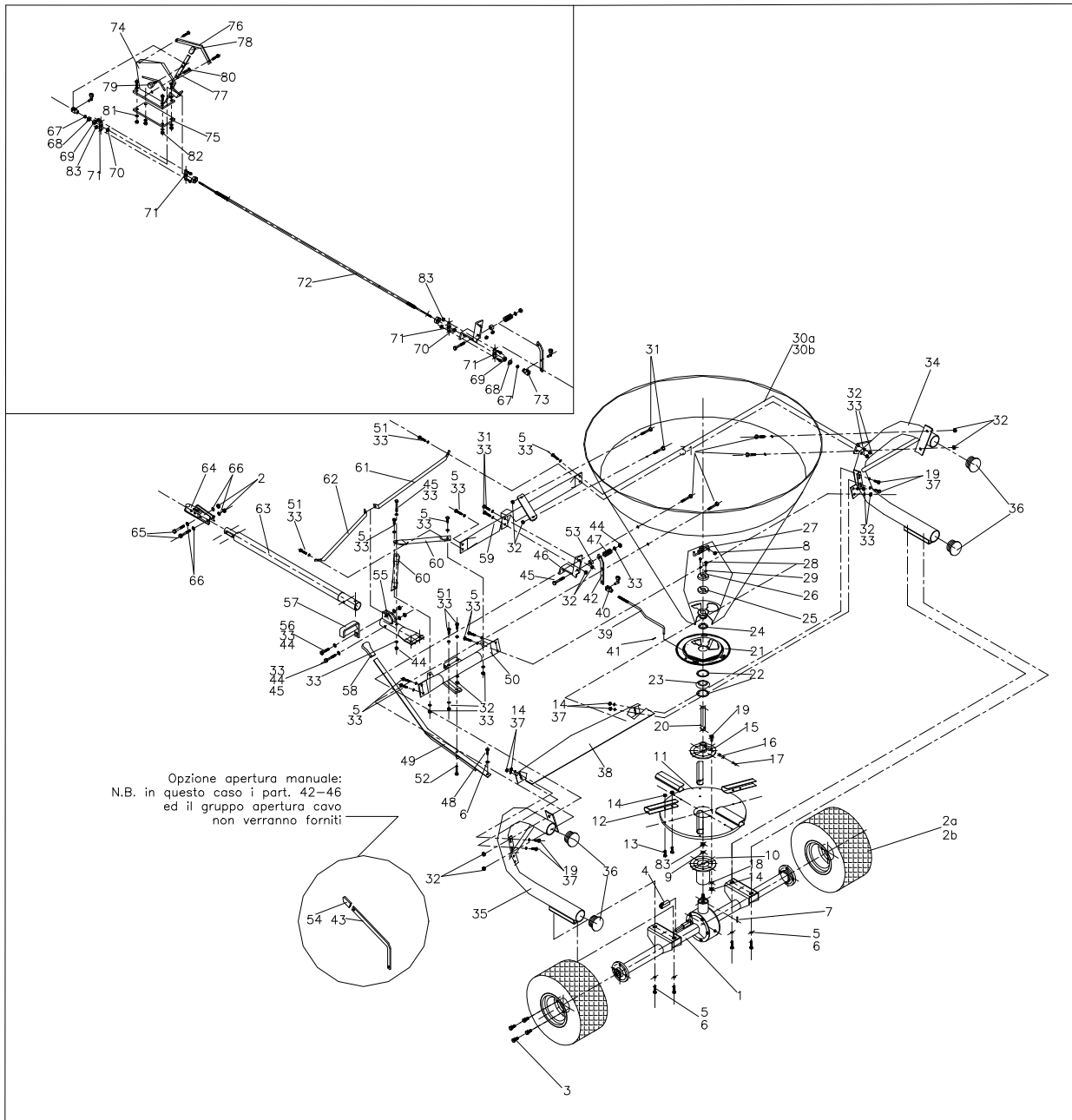


Table 02

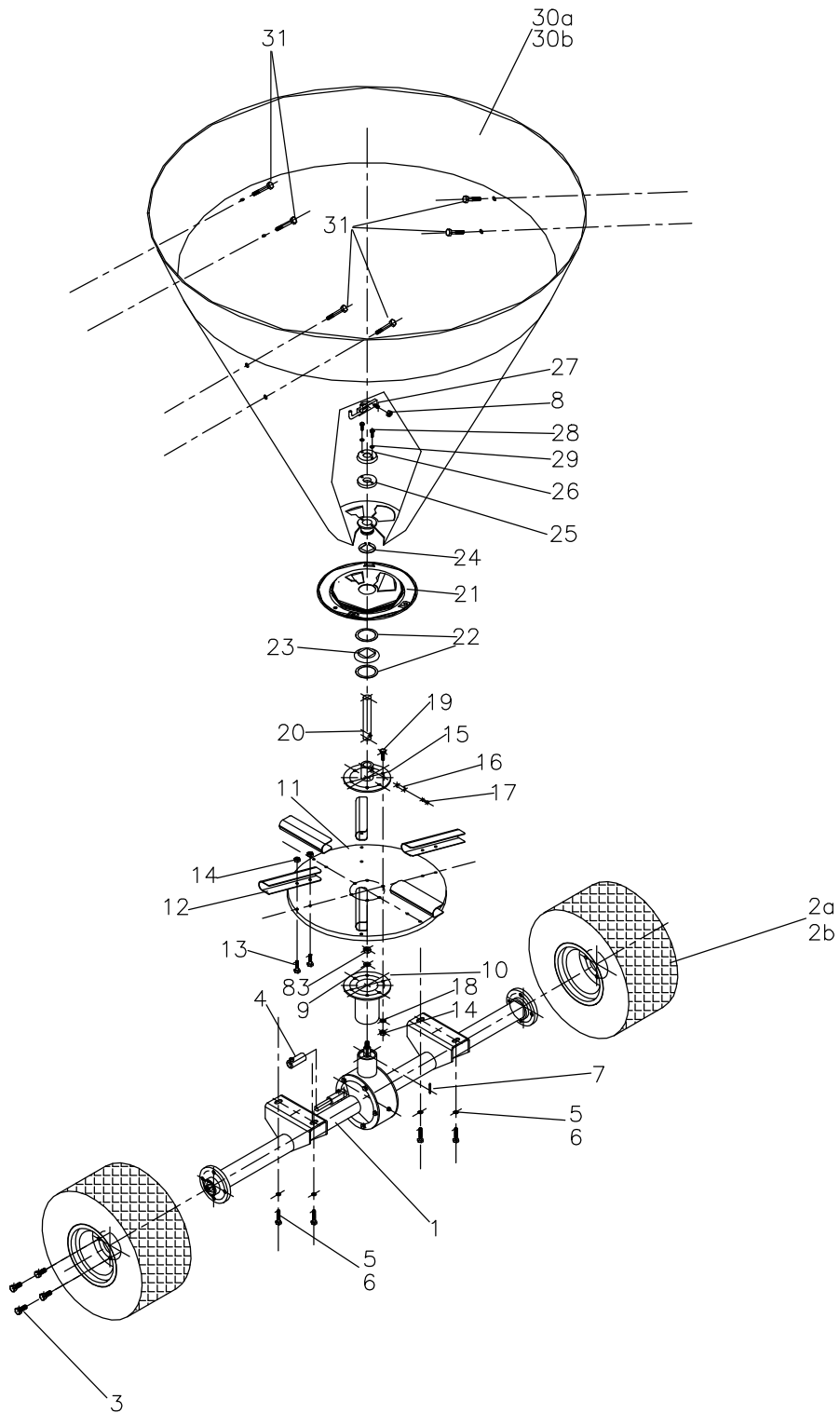


Table 03

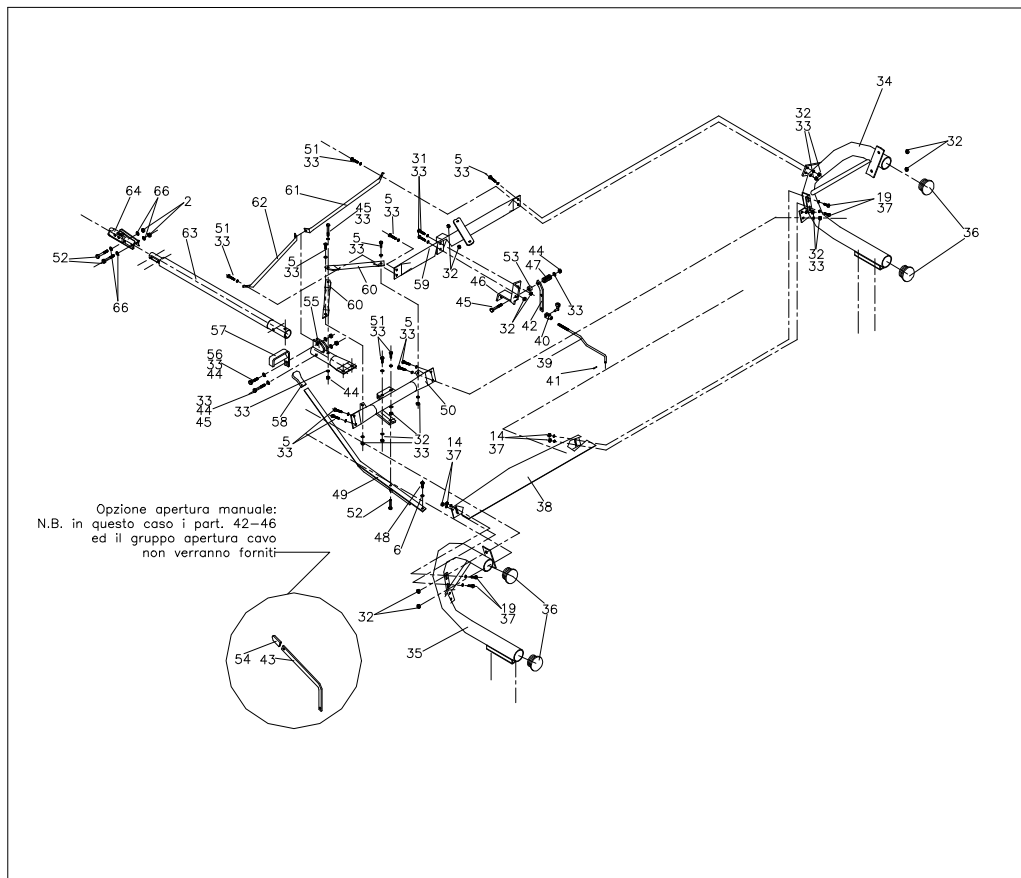
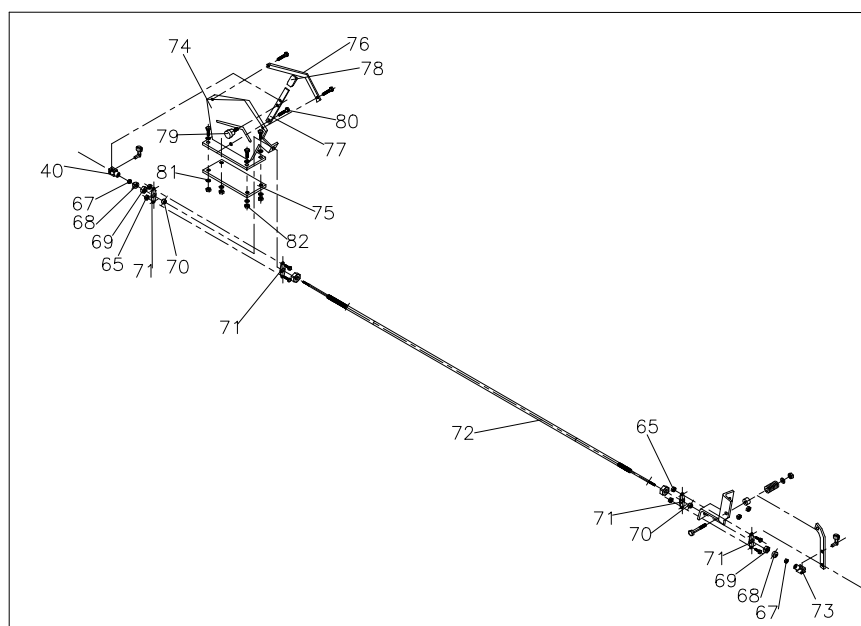


Table 04



POS.	QTY	CODE	DESCRIPTION
1	1	620.014	Axle
2a	2	620.007	Wheel 20x10.00 - 8 D266
2b	2	620.008	Wheel 18x9.50 - 8 S366K
3	8	300.006	Hexagonal-head screw 12x30
4	1	325.017	Release bushing
5	12	300.003	Hexagonal-head screw 10x25
6	5	303.025	Washer 10x30
7	1	313.016	Key 6x6x25
8	3	301.008	Self-locking nut M12
9	1	303.019	Washer 14x42x3
10	1	325.018	Rotary bushing
11	1	610.010	Spreader disc
12	6	601.003	Distributor vane
13	12	300.030	Roundhead screw 8x16
14	26	301.012	Nut M8
15	1	325.001	Disc's upper bushing
16	1	305.001	Spring pin 8x40
17	1	305.003	Spring pin 5x40
18	10	303.007	Washer 8x17
19	14	300.029	Hexagonal-head screw 8x20
20	1	330.005	Entrainer
21	1	610.011	Stainless steel adjustment disc
22	2	303.012	Thickning washer 56x70x0,5
23	1	303.031	Belleville washer 79,5x55,5x0,8
24	1	313.012	Retaining ring M55
25	1	304.036	Rubber washer
26	1	620.009	Metal ring
27	1	619.003	Lower agitator
28	8	300.026	Hexagonal-head screw 6x16
29	8	303.014	Washer 6x12
30a	1	609.031	Hopper PTB 560
30b	1	609.030	Hopper PTB 430
31	8	300.023	Roundhead screw 10x20
32	20	301.010	Nut M10
33	31	303.015	Washer 10x20
34	1	613.020	Left frame tube
35	1	613.021	Right frame tube
36	4	612.004	Plastic cap for frame
37	8	303.013	Washer 8x24
38	1	639.003	Cover panel
39	1	602.016	Opening tie rod
40	1	332.004	Tie rod fork 10x20 M10
41	1	305.008	Spring pin R3
42	1	620.012	Leverage opening system
43	1	620.013	Leverage manual opening system
44	4	301.013	Self-locking nut M10

POS.	QTY	CODE	DESCRIPTION
45	2	300.015	Hexagonal-head screw 10x80
46	1	620.010	Support bracket for opening system
47	1	617.002	Spring 40x20x10
48	1	300.004	Hexagonal-head screw 10x30
49	1	620.011	Release lever
50	1	613.022	Lower crossbar
51	4	300.017	Hexagonal-head screw 10x35
52	3	300.007	Hexagonal-head screw 12x55
53	1	325.022	Nylon spacer M10
54	1	304.028	Rubber handle 20x10 for manual opening system
55	2	620.030	Support bracket for upper tie rod
56	1	300.005	Hexagonal-head screw 10x50
57	1	620.016	Support for release lever
58	1	304.014	Rubber handle 30x10
59	1	613.023	Upper crossbar
60	2	602.013	Lower reinforcement tie rod
61	1	602.014	Left upper reinforcement tie rod
62	1	602.015	Right upper reinforcement tie rod
63	1	620.017	Drawbar tube
64	1	620.018	Draw hook 2"
65	6	301.009	Self-locking nut M6
66	4	303.026	Washer 12x24
67	1	325.021	Nylon bushing M12
68	2	620.027	Lower support bracket
69	2	620.031	Support bracket for drawbar connection
70	1	620.036	Bracket for release lever connection
71	2	620.025	Frame support
72	1	620.004	Opening cable
73	1	306.007	Grease nipple M6
74	1	620.024	Support block for opening system
75	2	620.020	Lower plate
76	1	620.023	Graduated index's blade
77	1	620.019	Adjusting spreading width lever
78	1	304.015	Rubber handle 20x5
79	1	302.003	Knob M8x25
80	1	300.052	Hexagonal-head screw 12x40
81	2	620.028	Support bracket for lower crossbar
82	2	620.029	Support bracket for upper crossbar
83	1	301.007	Self-locking nut M14
84	1	620.032	Opening system support
85	3	620.026	Two holes bracket for hopper support
86	1	620.033	Right support for cover panel
87	1	620.034	Left support for cover panel
88	2	620.035	Bracket for the frame fastening to the axle
91	1	325.023	Bottom hopper bushing