



Cresciamo insieme | Let's grow together

Double disc fertilizer spreader RE-A / RE-F / REX-A / REF-X

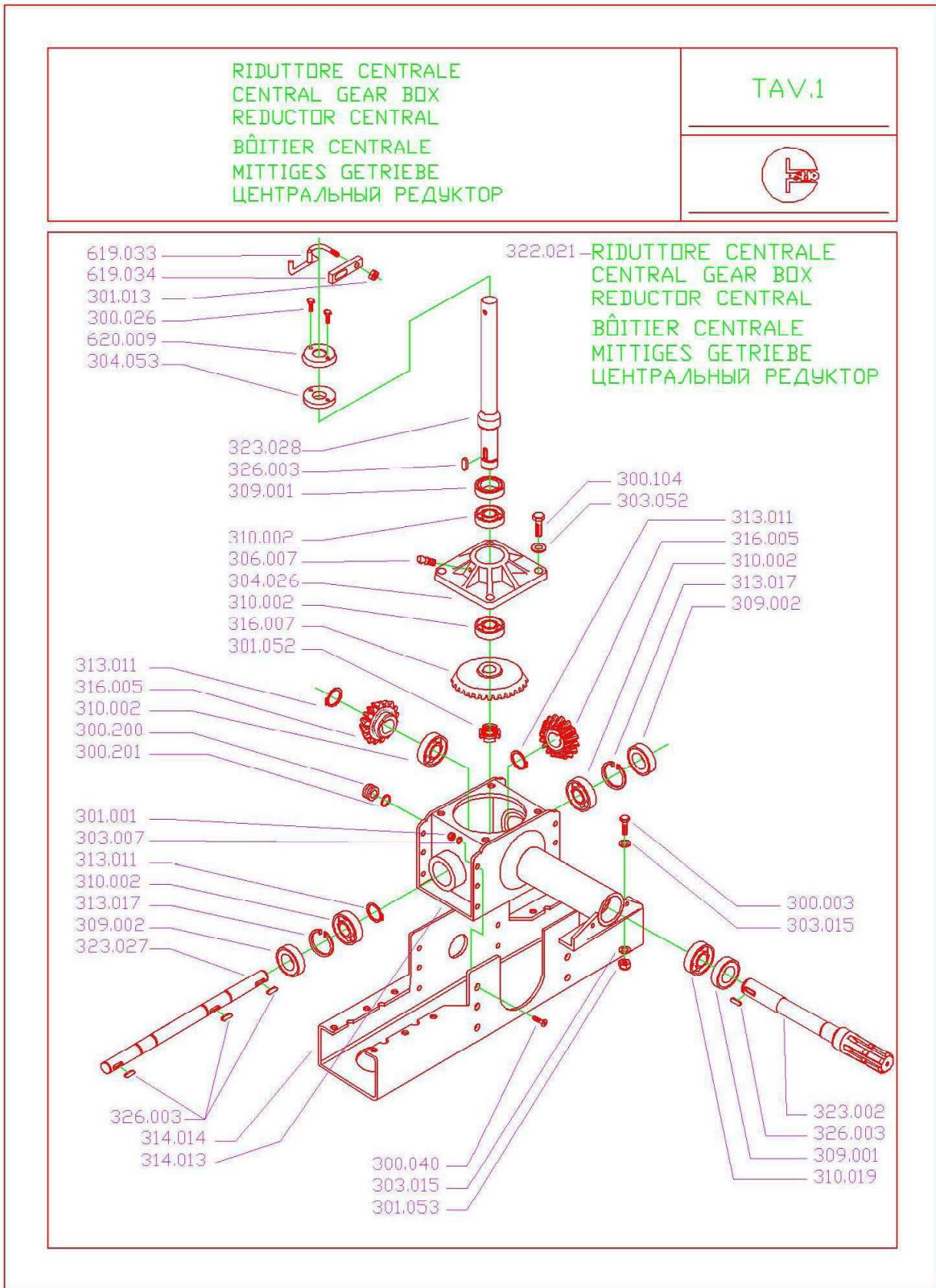
Edizione del marzo 2019 - 900.111



OWNER'S MANUAL

Read the Operator's manual entirely before using the machine.

COSTRUCTION DRAWINGS AND COMPONENTS LIST OF THE MACHINE:

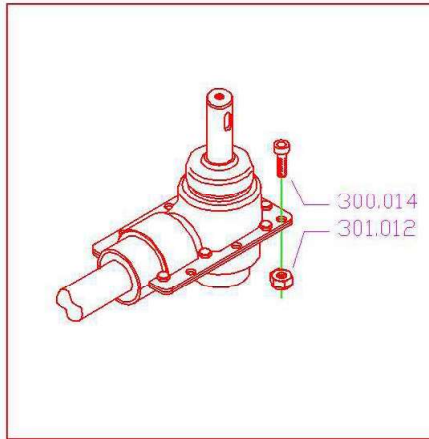


CENTRAL GEARBOX
SEE TABLE 1

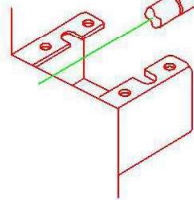
| ITEM | Q.TY | DESCRIPTION |
|---------|------|---|
| 322.021 | 1 | ASSEMBLED CENTRAL GEARBOX |
| 323.028 | 1 | UPPER SHAFT AGITATOR |
| 326.003 | 5 | KEY 8X7X20 |
| 309.001 | 2 | OIL SEAL 35X52X7 |
| 310.002 | 5 | BALL BEARING 25X52X15 (6205) |
| 310.019 | 1 | BALL BEARING 25X52X15 2RS |
| 306.007 | 1 | GREASE NIPPLE M6 |
| 304.026 | 1 | ALUMINIUM FLANGE |
| 316.007 | 1 | CROWN GEAR Z32 |
| 301.052 | 1 | SELF-LOCKING NUT PN 5 25X1,5 |
| 316.005 | 2 | PINION Z16 |
| 313.011 | 3 | SPLIT RING 7435 E25 |
| 313.017 | 2 | SPLIT RING 7437 I52 |
| 309.002 | 2 | OIL SEAL 25X52X7 |
| 323.027 | 1 | LONG CENTRAL SHAFT |
| 314.013 | 1 | INT. GEAR HOUSING |
| 314.014 | 1 | EXT. GEAR HOUSING |
| 300.200 | 1 | OIL LEVEL CAP 14X1.5 |
| 300.201 | 1 | ALUMINIUM GASKET 14X18X1,5 |
| 323.002 | 1 | INPUT SHAFT |
| 303.052 | 4 | FLAT WASHER 6292 10X20 ST. S. |
| 300.104 | 4 | HEX. HEAD SCREW 10X30 UNI5739 ST. S. |
| 300.003 | 2 | HEX. HEAD SCREW 10X25 |
| 301.053 | 2 | SELF-LOCK. NUT M10 |
| 303.015 | 4 | WASHER 10X20 GALV. |
| 300.040 | 12 | FLAT HEAD SOCKET SCREW 8X20 UNI5933 GALV. |
| 303.007 | 12 | WASHER 8X17 UNI6592 GALV. |
| 301.001 | 12 | SELF-LOCK. NUT M8 GALV. |
| 300.026 | 2 | HEX. HEAD SCREW 6X16 UNI5739 GALV. |
| 304.053 | 1 | RUBBER RING |
| 620.009 | 1 | METAL RING |
| 301.013 | 1 | SELF LOCK. NUT M10 GALV. |
| 619.033 | 1 | LOWER AGITATOR (PTB) |
| 619.034 | 1 | LOWER AGITATOR PLATE (PTB) |

RIDUTTORE LATERALE PER DISCO SMONTABILE
 LATERAL GEAR BOX
 REDUCTOR LATERAL
 BÔITIER LATÉRALE
 SEIT LICHES GETRIEBE
 БОКОВОЙ РЕДУКТОР

TAV.2

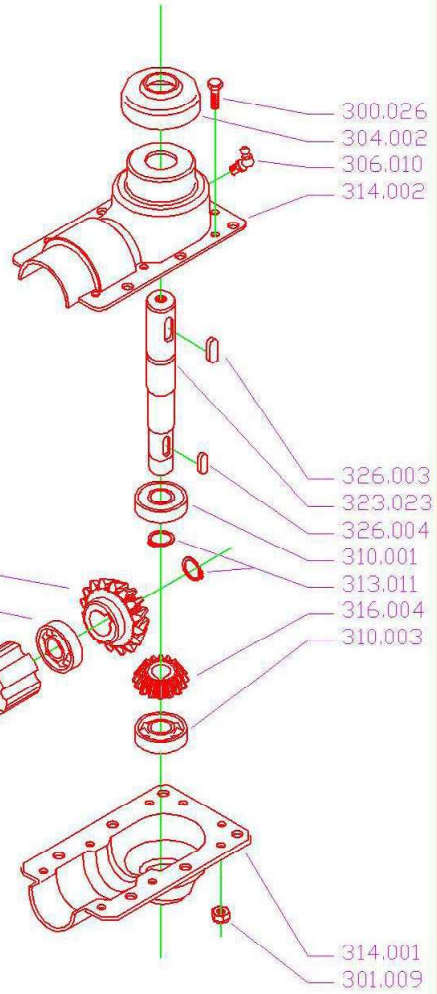


316.006
 310.002
 329.011
 310.001
 313.010



322.020

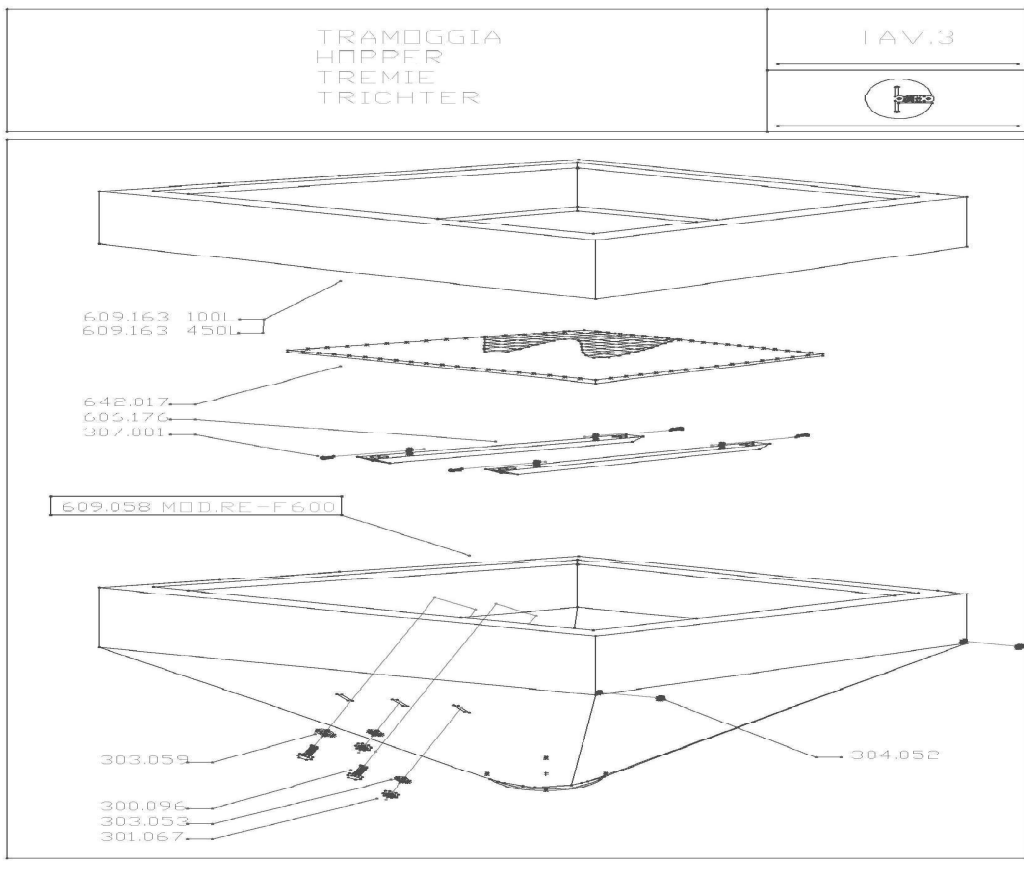
RIDUTTORE LATERALE PER DISCO SMONTABILE
 LATERAL GEAR BOX
 REDUCTOR LATERAL
 BÔITIER LATÉRALE
 SEIT LICHES GETRIEBE
 БОКОВОЙ РЕДУКТОР



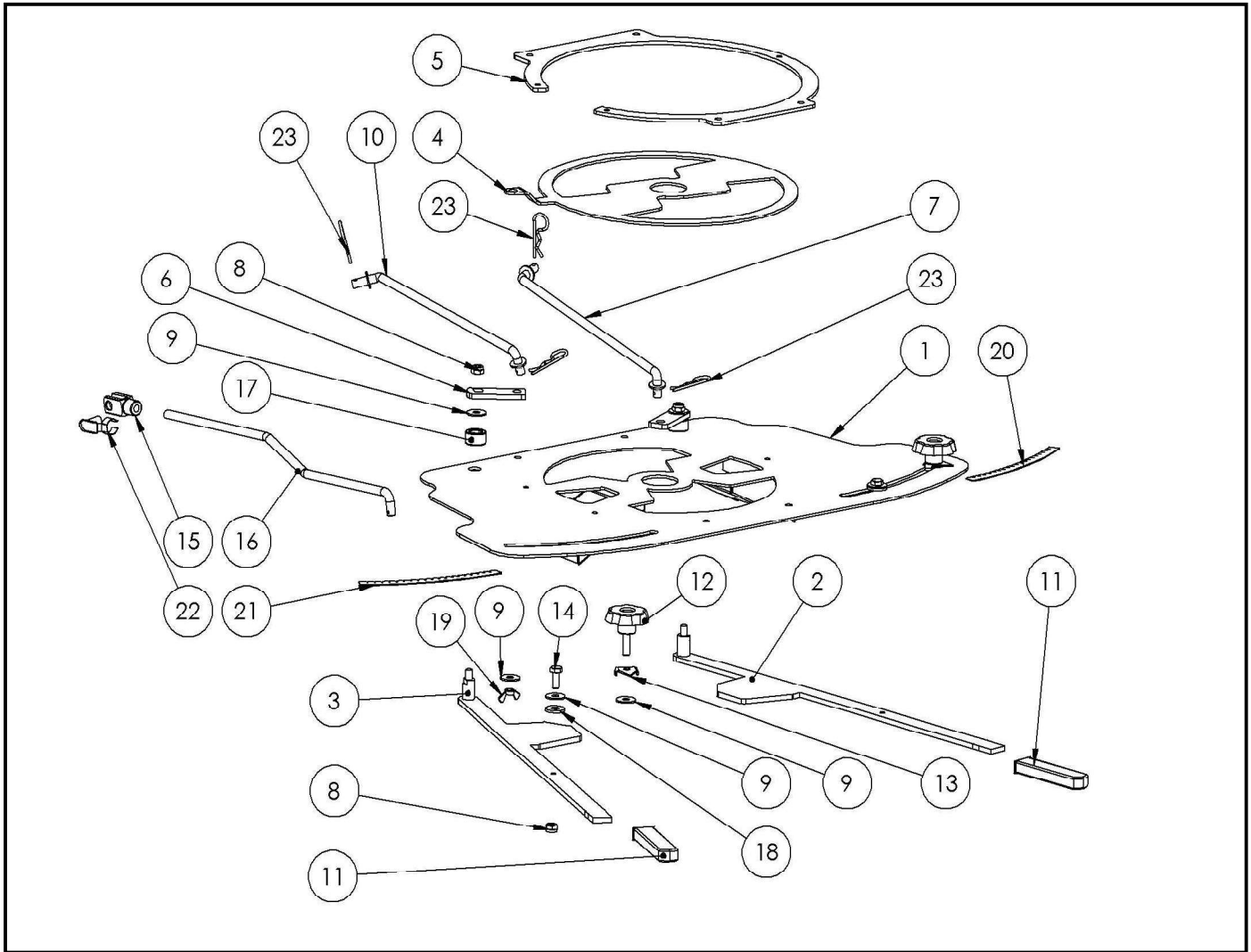
300.026
 304.002
 306.010
 314.002
 326.003
 323.023
 326.004
 310.001
 313.011
 316.004
 310.003
 314.001
 301.009

LATERAL GEARBOX FOR DISASSEMBLED DISC
SEE TABLE 2

| ITEM | Q.TY | DESCRIPTION |
|---------|------|-----------------------------------|
| 322.020 | 1 | LATERAL GEARBOX RE |
| 316.006 | 1 | PINION Z19 |
| 310.001 | 2 | BALL BEARING 25X52X15 (6205 2RS) |
| 310.002 | 1 | BALL BEARING 25X52X15 (6205) |
| 329.011 | 1 | SPACER |
| 313.011 | 2 | SPLIT RING 7435 E25 |
| 326.003 | 1 | KEY 8X7X20 |
| 301.009 | 8 | SELF-LOCK. NUT M6 GALV. |
| 304.002 | 1 | DUST GUARD |
| 306.010 | 1 | GREASE NIPPLE 90° M8X1,25 |
| 300.026 | 8 | HEX. HEAD SCREW 6X16 |
| 314.002 | 1 | UPPER SHELL |
| 323.023 | 1 | OUTPUT SHAFT OF DISASSEMBLED DISC |
| 326.004 | 1 | KEY 6X6X20 |
| 316.004 | 1 | PINION Z13 |
| 310.003 | 1 | BALL BEARING 20X52X15 (6304) |
| 314.001 | 1 | LOWER SHELL |
| 300.014 | 6 | CYLINDRED HEAD SCREW 8X16 GALV. |
| 301.012 | 6 | NUT M8 GALV. |

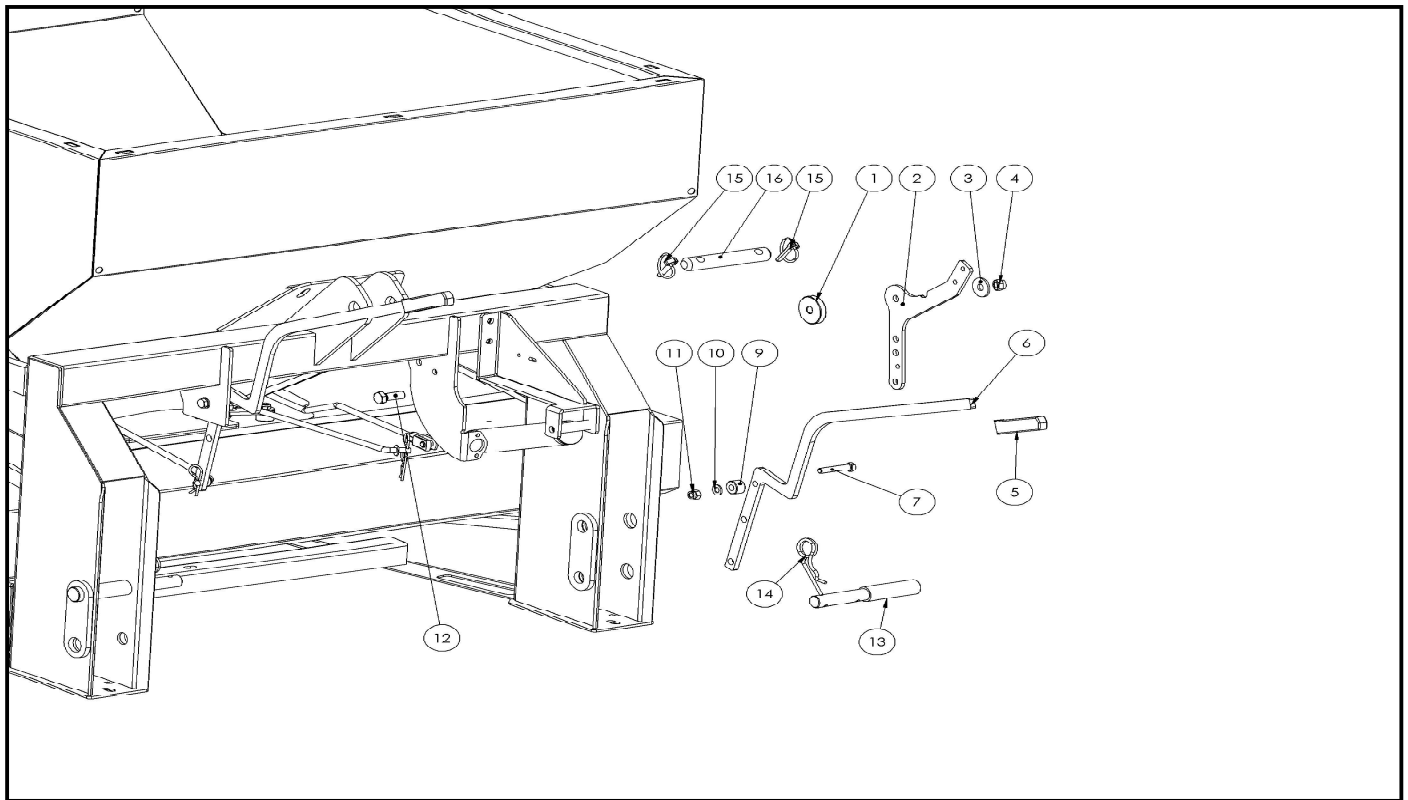


| Code | QTY | REF. | DESCRIZIONE | DESCRIPTION |
|---------|-----|------|----------------------------|----------------------------------|
| 609.058 | 1 | | TRAMOGGIA MODELLO RE-F 600 | HOPPER RE_F 600 |
| 609.170 | 1 | | TRAMOGGIA MODELLO REFX 600 | HOPPER REFX 600 |
| 609.163 | 1 | | KIT RIALZO 100 L | EXTENTION KIT 100 L |
| 609.078 | 1 | | KIT RIALZO 450 L | EXTENTION KIT 450 L |
| 300.096 | 8 | | VITE TTQST 10X25 INOX | CUP SQUARE HEAD SCREW 10X25 ST.S |
| 303.053 | 8 | | RONDELLA 10X30 INOX | WASHER 10X30 ST.S |
| 303.059 | 4 | | RONDELLA 12X36 INOX | WASHER 12X36 ST.S |
| 301.067 | 8 | | DADO MEDIO M10 INOX | NUT M10 ST.S |
| 304.052 | 2 | | TAPPO IN GOMMA DIAM. 14 MM | RUBBER CAP DIAMETER: 14 MM |
| 606.176 | 2 | | RINFORZO INT. TRAMOGGIA | INNER STIFFENING BAR |
| 305.010 | 4 | | COPIGLIA "R" PER GRIGLIA | R PIN |
| 642.017 | 1 | | GRIGLIA DI PROTEZIONE | PROTECTION GRID |
| 609.063 | 1 | | TRAMOGGIAMODELLO REAX 1000 | HOPPER REAX 1000 |
| 609.062 | 1 | | TRAMOGGIA MODELLO REAX 800 | HOPPER REAX 800 |
| 609.061 | 1 | | TRAMOGGIA MODELLO REA 800 | HOPPER RE 800 |
| 609.060 | 1 | | TRAMOGGIA MODELLO REA 1000 | HOPPER RE 1000 |



LEVER OPENING PLATE

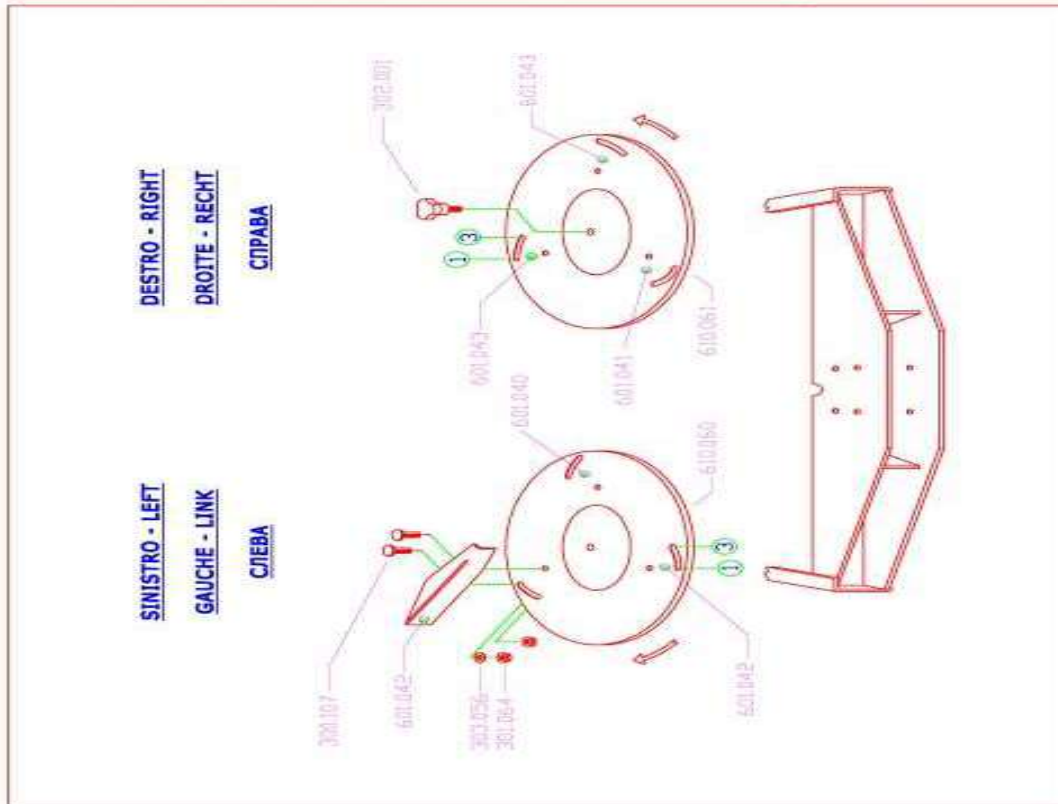
| Codice Code | QTY | REF. | DESCRIZIONE | DESCRIPTION |
|-------------|-----|------|----------------------------|--|
| 606.210 | 1 | 1 | Piastra apertura RE-F | Opening plate st.s |
| 606.214 | 1 | 2 | Leva Sx apertura piastra | LEVERS ST.left |
| 606.215 | 1 | 3 | Leva Dx apertura piastra | LEVERS ST.right |
| 606.175 | 1 | 4 | Disco apertura | Opening disc |
| 606.174 | 1 | 5 | Cordolo ferro piastra | Spacer |
| 606.213 | 2 | 6 | Piastra leva frutteto | Lever plate |
| 602.131 | 1 | 7 | Tirante Sinistro | Opening rod left |
| 301.065 | 4 | 8 | Dado aut. Basso M8 inox | Self-lock nut M8 inox |
| 303.051 | 8 | 9 | Rondella 8x24 inox | Washer 8x24 inox |
| 602.130 | 1 | 10 | Tirante destro | Opening rod right |
| 304.008 | 2 | 11 | Impugnatura 25x5 | Grip 25x5 |
| 302.002 | 2 | 12 | Pomello | Knob 8x25 |
| 616.004 | 2 | 13 | Indice leva | Adjusting index |
| 300.101 | 2 | 14 | Vite te 8x20 uni5739 inox | Hex Head screw 8x20 inox |
| 332.004 | 1 | 15 | Forcella 10x20 zb | Male yoke end M10 W/Thread & Hole Galv |
| 602.126 | 1 | 16 | Tirante apertura RE | Opening rod |
| 329.014 | 2 | 17 | Distanziale 25-15.2-14 | Nylon spacer 25-15.2-14 |
| 303.043 | 2 | 18 | Rondella Nylon 10.2x24x2.5 | Washer nylon 10.2x24x2.5 |
| 301.005 | 2 | 19 | Dado ad alette m8 zn | Nut M8 galv |
| 308.031 | 1 | 20 | Adesivo graduato dx | Graduated Sticker right |
| 308.032 | 1 | 21 | Adesivo graduato sx | Graduated Sticker left |
| 332.006 | 1 | 22 | Clips 10x20 zinc | Clips |
| 307.004 | 4 | 23 | Copiglia R4 | R pin |



| Codice Code | QTY | REF. | DESCRIZIONE | DESCRIPTION |
|-------------|-----|------|----------------------------|----------------------------|
| 329.010 | 1 | 1 | Distanziale in nylon | Nylon Spacer |
| 604.012 | 1 | 2 | Leva corta RE-RT18 | Short level |
| 303.047 | 1 | 3 | Rondella 12x36 uni 6593 zb | Washer 12x36 galv |
| 301.086 | 1 | 4 | Dado aut. Basso M12 | Self-lock nut M12 inox |
| 304.008 | 2 | 5 | Impugnatura in gomma 25x5 | Grip 25x5 |
| 618.010 | 2 | 6 | Leva apertura | levers |
| 300.106 | 2 | 7 | Vite Te 10x50 uni5739 inox | Hex Head screw 10x50 galv. |
| - | - | 8 | - | |
| 325.022 | 2 | 9 | Distanziale in nylon | Nylon Spacer |
| 303.052 | 2 | 10 | Rondella piana inox 10x20 | Washer 10x20 inox |
| 301.077 | 2 | 11 | Dado aut. Alto M10 inox | Self-lock nut M12 inox |
| 300.124 | 2 | 12 | Vite TE 12x35 uni5739 inox | Hex Head screw 12x35 galv. |
| 633.022 | 2 | 13 | Perno soll.inf 22-28 zb | Lower Link Pin 22-28 galv |
| 307.001 | 2 | 14 | Copiglia R Diam 4 mm Zb | R Pin D4 |
| 302.007 | 1 | 15 | Spina a scatto Diam.8 | R Pin D8 |
| 633.020 | 1 | 16 | Perno Soll. Sup. 25x144 | Upper Link Pin 25x144 galv |

DISCHI SPARGITORI SMONTABILI
 SPREADER DISCS
 DISQUES D'EPANDAGE
 SCHELEUDERSCHEIBEN
 Распределительные диски

TAV.6



DISTRIBUTION DISCS
 SEE TABLE 6

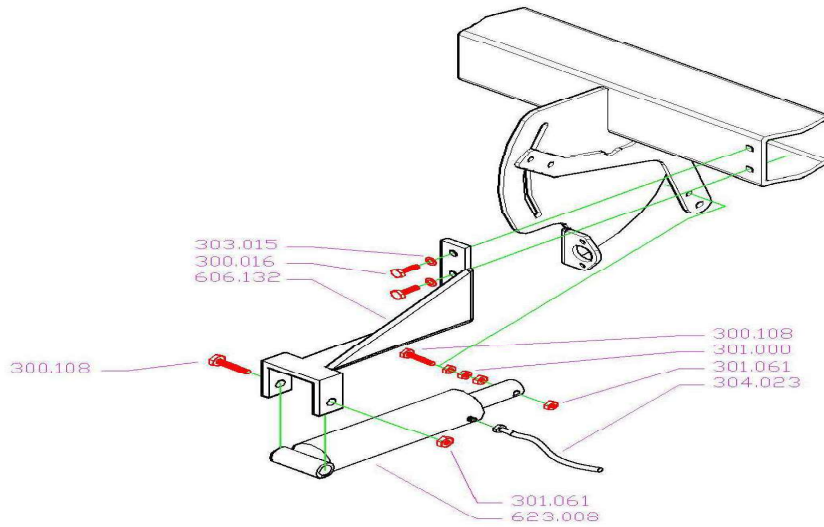
| ITEM | Q.TY | DESCRIPTION |
|---------|------|---------------------------------|
| 610.060 | 1 | ST.S. DISTRIBUTION DISC W/BUSH |
| 610.061 | 1 | ST.S. DISTRIBUTION DISC W/BUSH |
| 610.062 | 1 | ST.S. DISTRIBUTION DISC W/VANES |
| 610.063 | 1 | ST.S. DISTRIBUTION DISC W/VANES |
| 300.107 | 12 | CUP SQUARE HEAD SCREW 8X16 ST.S |
| 301.064 | 12 | NUT M8 ST.S |
| 303.056 | 6 | WASHER 8X16 ST.S |
| 302.001 | 2 | LOBE KNOB D.60 M10X20 |
| 601.040 | 1 | LEFT ST.S VANE |
| 601.042 | 2 | LEFT ST.S BENT VANE |
| 601.041 | 1 | RIGHT ST.S VANE |
| 601.043 | 2 | RIGHT ST.S BENT VANE |

APERTURA IDRAULICA
HYDRAULIC OPENING SYSTEM
OUVERTURE HYDRAULIQUE

TAV.7

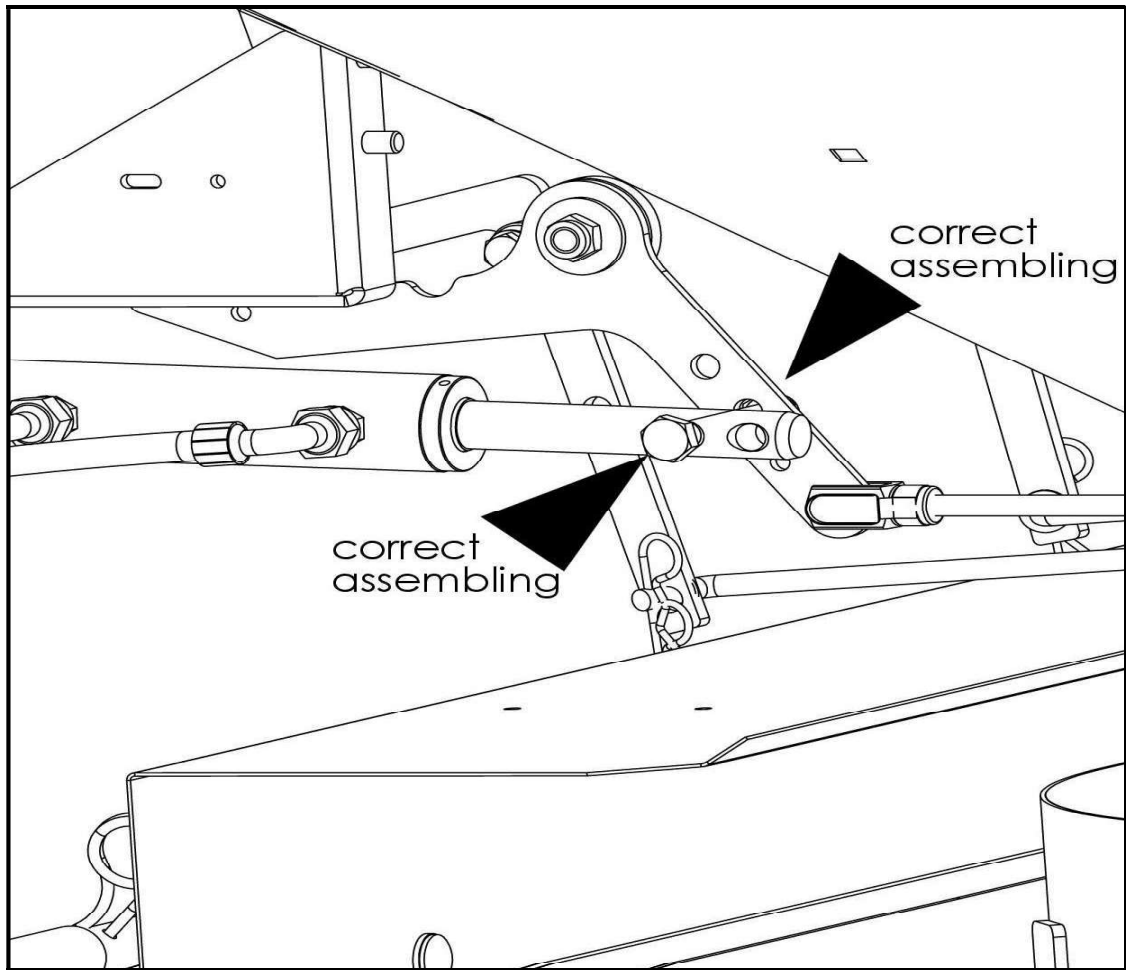


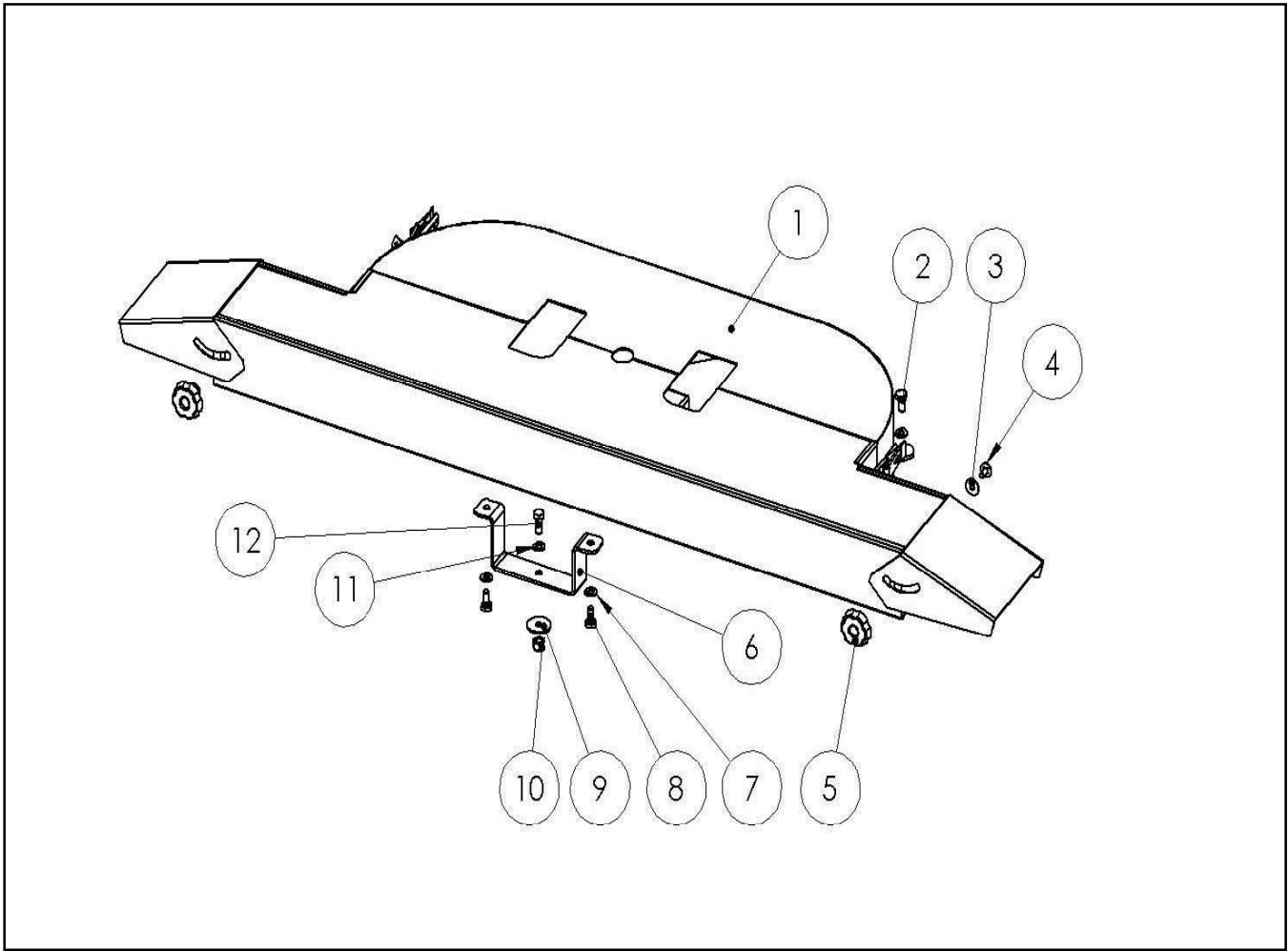
619.013 — APERTURA IDRAULICA
HYDRAULIC OPENING SYSTEM
OUVERTURE HYDRAULIQUE



HYDRAULIC CYLINDER
SEE TABLE 7

| ITEM | Q.TY | DESCRIPTION |
|---------|------|-----------------------------|
| 619.013 | 1 | HYDRAULIC OPENING SYSTEM |
| 606.132 | 1 | CYLINDER SUPPORT |
| 623.008 | 1 | HYDRAULIC CYLINDER |
| 304.023 | 1 | FLEXIBLE HOSE |
| 300.108 | 2 | HEX. HEAD SCREW 12X90 GALV. |
| 301.000 | 3 | NUT M12 GALV. |
| 301.061 | 2 | SELF-LOCK. NUT M12 GALV. |
| 300.016 | 2 | HEX. HEAD SCREW 12X20 GALV. |
| 303.015 | 2 | WASHER 10X20 GALV. |





619.200_ Kit Double Lateral Conveyor

| Codice Code | QTY | REF. | DESCRIZIONE | DESCRIPTION |
|-------------|-----|------|-------------------------------|---------------------------------|
| 620.095 | 1 | 1 | Convogliatore laterale doppio | Double Lateral Conveyor |
| 610.061 | 4 | 2 | Vite TE M10x20 uni 5739 ZB | Hex. Head screw M10x20 uni 5739 |
| 610.062 | 2 | 3 | Rond. 8x24 uni 6593 ZB | Washer 8x24 uni 6593 |
| 610.063 | 2 | 4 | Vite TTQST M8x16 | Round-head screw M8x16 |
| 300.107 | 2 | 5 | Volantino Femm. Dm40 M8 | Knob Dm40 M8 |
| 301.064 | 1 | 6 | Staffa fissaggio conv. | Support bracket |
| 303.056 | 4 | 7 | Rondella 10x20 uni 6591 ZB | Washer 10x20 uni 6591 |
| 302.001 | 2 | 8 | Vite TE M10x20 uni 5739 ZB | Hex Head screw M10x20 uni 5739 |
| 601.040 | 1 | 9 | Rondella 10x40 uni 6593 ZB | Washer 10x40 uni 6593 |
| 601.042 | 1 | 10 | Dado autobloc. alto M10 ZB | Self-locking nut M10 |
| 601.041 | 1 | 11 | Rondella 10x20 uni 6591 ZB | Washer 10x20 uni 6591 |
| 601.043 | 1 | 12 | Vite TE M10x25 uni 5739 ZB | Hex. Head screw M10x25 uni 5739 |

WORKING HEIGHT



85 cm between the ground level and the distribution disc height

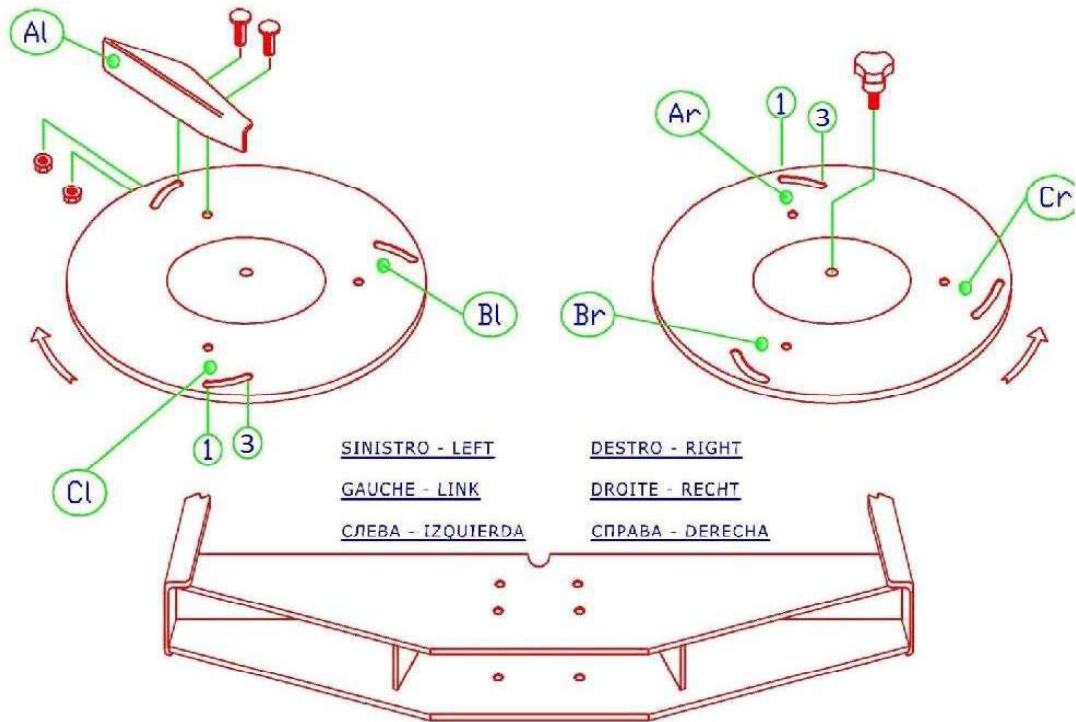
REGOLAZIONE POSIZIONE PALETTE

REGLAGE POSITION PALETTES

ADJUSTMENT VANES POSITION

AJUSTE POSICION PALETAS

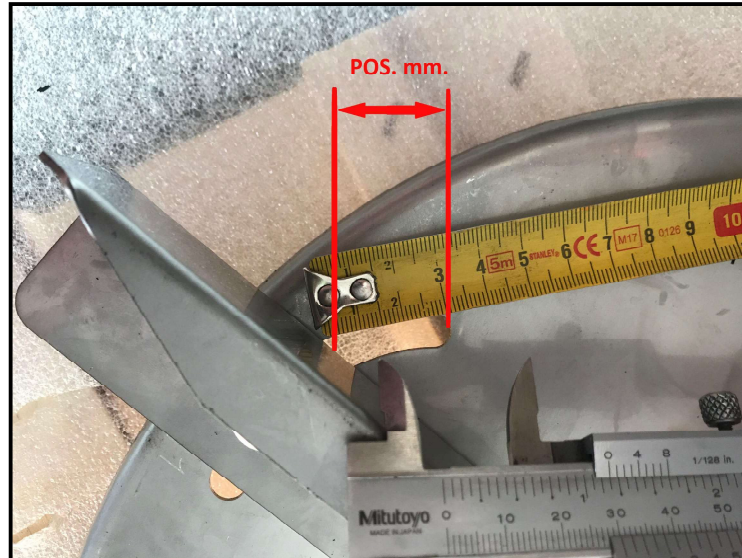
WURFSCHAUFELN EINSTELLUNG



| TIPO PALETTA TYPE AUBE VANE TYPE TIPO PALETA WURFSCHAUFELN TYP | POSIZIONE PALETTA POSITION AUBE VANE POSITION POSICION PALETA WURFSCHAUFELN POSITION | MISURA POSIZIONE POSITION REGLAGE SET POSITION POSICION AJUSTE WURFSCHAUFELN EINSTELLUNG |
|--|--|--|
| PIATTA-PLATE-PLAIN-RECTA- FLACH | Al - Ar | 30 mm. |
| PIATTA-PLATE-PLAIN-RECTA- FLACH | Cl - Cr | 37 mm. |
| INCLINATA-COURBEE-BENT- INCLINADA-GEBOGEN | Bl - Br | 25 mm. |

ADJUSTING SPREADER VANES

When you need to set or adjust the vane position, read the table on the previous page and follow the measurement as shown in the picture below.



If you install the lateral conveyor, replace the third flat vane to the curved one on the disc, in the same position of two others. This vane is supplied with the lateral conveyor. In case the conveyor is already mounted on the machine, Cosmo provides you with two curved vanes in order to use the machine in open fields without conveyor, just replacing a flat vane with the curved one on both discs.



TABELLA DI SPANDIMENTO - SPREADING CHART - TABELLE D'EPANDAGE - TABLA DE ESPARCIMIENTO - STREUUNGSTABELLE - ТАБЛИЦА РАЗБРАСЫВАНИЯ

| | | | | |
|----------|---|--|--|--|
| T | TIPO DI CONCIME TYPE OF FERTILISER TYPE DE FENGIS ART DES DUNGERS ТИП УДОБРЕНИЯ | POSIZIONE FERMO LEVA APERTURAQUANTITR' CONCIME (kg./Ettaro) POSITION OF THE STOP LEVER OF THE FERTILISER QUANTITY (kg./hectare) POSITION DE LA PALANQUE DE APERTURE QUANTITE DEL ARBONO (kg./hectare) OFFHANGS NEBEL EINSTELLENS LAGE DUNGERSMENGE (kg./hectar) ПОЗИЦИЯ "СТОП" РЫЧАГА ОТКРЫВАНИЯ КОЛИЧЕСТВА УДОБРЕНИЯ (кг./га) | | HOSVIO Agricultural machines |
| L | LARGHEZZA DI SPAND. SPREADING WIDTH LARGUEUR D'EPANDAGE ANCHOZ DE ESPARCIMIENTO ШИРИНА РАЗБРАСЫВАНИЯ (cm.) | | | |
| V | VELOCITA' TRATTORE TRACTOR SPEED VITESSE TRACTEUR GESW. SCHLEP. (km./h.) СКОРОСТЬ ТРАКТОРА (км./ч.) | | | |
| A | GIRI PRESA DI FORZA RPM - REVOLUTIONS PER MINUTE TR/MN - TOURS/MINUTE RPM - REVOLUCIONES POR MINUTO ОБОРОТОВ В МИНУТУ (ОБ./МИН) | | | |

| T | L | V | A | VELOCITA' CONSIGLIATA - SUGGESTED SPEED - VITESSE CONSEILLEE - VELOCIDAD SUGERIDA - VORGESCHLAGENE GESCHWINDIGKEIT - РЕКОМЕНДУЕМАЯ СКОРОСТЬ 8 Km. | | | | | | | | | | | | | | | | | |
|---|----|----|---------------|---|----|----|----|-----|-----|-----|-----|-----|-----|-----|-----|-----|-----|-----|-----|-----|-----|
| | | | | Palette-Vanes-Palettes-Paletas-Schaufel/Zonarium van. pos. | 1k | 2k | 3k | 4k | 5k | 6k | 7k | 8k | 9k | 10k | 11k | 12k | 13k | 14k | 15k | 16k | 17k |
| Granulare-Granular-Granulaire-Granulador-Granuliert-Гранулированные 12-12 or 15-15-15 | 18 | 6 | DR. al-30.mm | 5 | 9 | 26 | 64 | 95 | 130 | 165 | 210 | 250 | 295 | 340 | 390 | 425 | 455 | 510 | 550 | 590 | 625 |
| | | 8 | DR. cr-37.mm | 3 | 7 | 20 | 50 | 70 | 95 | 125 | 155 | 190 | 220 | 260 | 290 | 320 | 340 | 380 | 413 | 440 | 470 |
| | | 10 | INC. cl-25.mm | 2 | 5 | 16 | 40 | 55 | 75 | 100 | 125 | 150 | 175 | 205 | 235 | 255 | 280 | 305 | 330 | 350 | 375 |
| Urea-Urea-Uree-Urea-Hamstoff -Мочевина | 12 | 6 | DR. al-30.mm | 7 | 13 | 40 | 95 | 145 | 190 | 245 | 310 | 375 | 440 | 510 | 585 | 635 | 680 | 760 | 830 | 880 | 935 |
| | | 8 | DR. cr-37.mm | 5 | 10 | 30 | 75 | 110 | 140 | 185 | 235 | 285 | 330 | 383 | 440 | 475 | 510 | 570 | 620 | 660 | 700 |
| | | 10 | INC. cl-25.mm | 4 | 8 | 24 | 55 | 85 | 115 | 150 | 190 | 225 | 265 | 310 | 350 | 380 | 410 | 455 | 500 | 530 | 560 |
| Grano-Wheat-blé-Gerste-пшеница | 6 | 6 | DR. al-30.mm | 3 | 5 | 12 | 30 | 60 | 100 | 140 | 195 | 230 | 255 | 290 | 320 | 375 | 410 | 475 | 525 | 595 | 635 |
| | | 8 | DR. cr-37.mm | 2 | 4 | 9 | 21 | 45 | 75 | 105 | 145 | 170 | 190 | 215 | 240 | 280 | 310 | 355 | 390 | 445 | 475 |
| | | 10 | INC. cl-25.mm | 1 | 3 | 7 | 15 | 35 | 60 | 85 | 115 | 135 | 150 | 170 | 190 | 225 | 245 | 285 | 315 | 355 | 380 |
| Orzo-Barley-orge-Weizen-ячмень | 6 | 6 | DR. al-30.mm | 3 | 6 | 16 | 29 | 45 | 61 | 80 | 109 | 133 | 160 | 176 | 200 | 227 | 275 | 309 | 341 | 349 | 360 |
| | | 8 | DR. cr-37.mm | 2 | 4 | 12 | 22 | 34 | 46 | 60 | 82 | 100 | 120 | 132 | 150 | 170 | 206 | 232 | 256 | 262 | 270 |
| | | 10 | INC. cl-25.mm | 1 | 3 | 10 | 18 | 27 | 37 | 48 | 66 | 80 | 96 | 106 | 120 | 136 | 165 | 186 | 205 | 210 | 216 |



Via Laghi di Avigliana 117 - Busca 12022 - CN - Italy

Phone +39 0171 946654 - fax +39 0171 946723

E-mail: imcosmo@cosmosrl.com - www.cosmosrl.com

