

DOUBLE-DISK FERTILIZER SPREADER RE MODEL



Draft in accordance with the Directive on Machinery

2006 / 42 / CE

Issue n.1 dated 06/12/2010

USER AND MAINTENANCE MANUAL

📖 Carefully read the manual before using the machine 📖

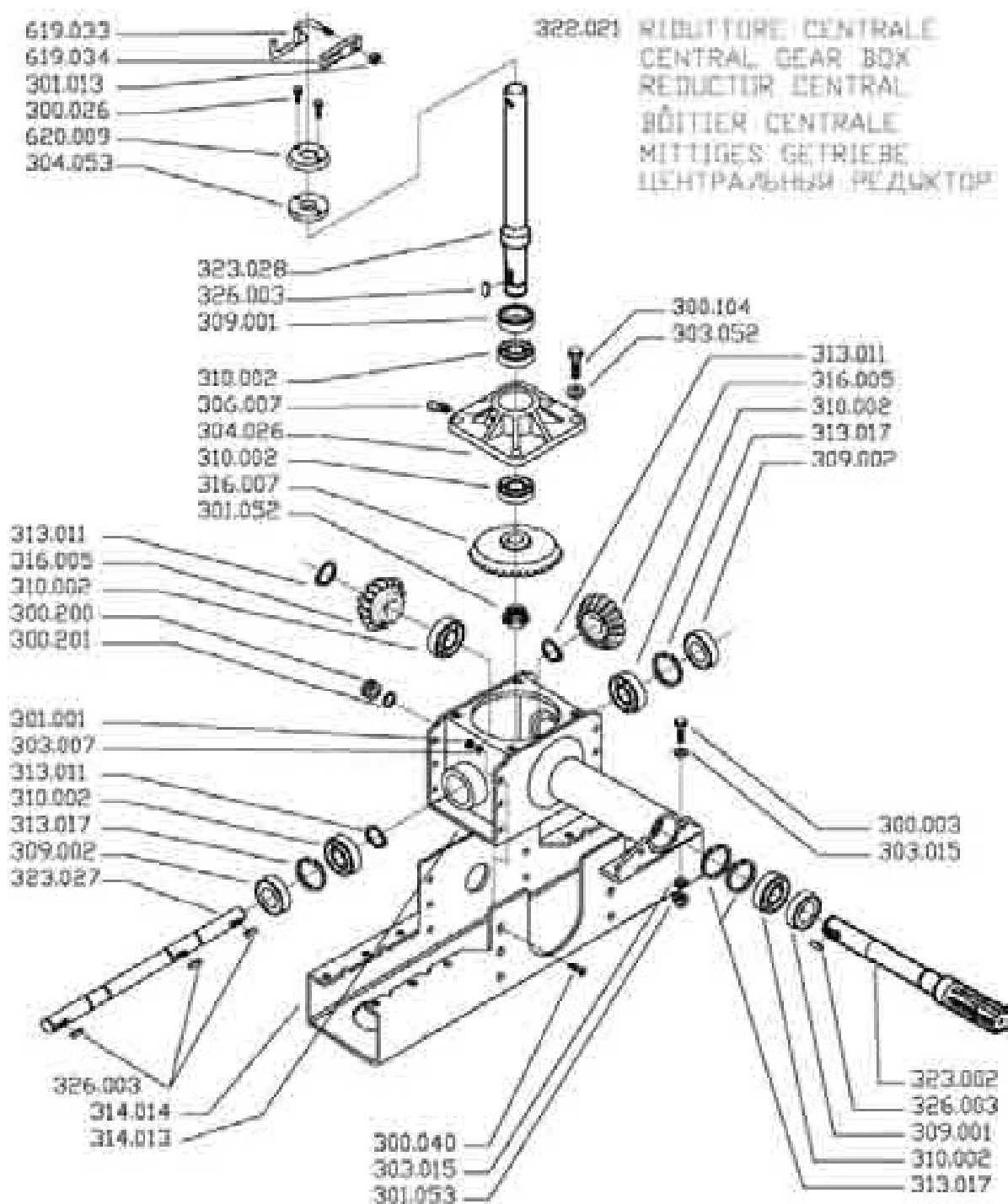
7. ANNEXES

ANNEX 1

TO THE USER MANUAL OF THE FERTILIZER SPREADER MOD. RE
 COSTRUCTION DRAWINGS AND COMPONENTS LIST OF THE MACHINE:

CENTRAL GEAR BOX

TAB. 1

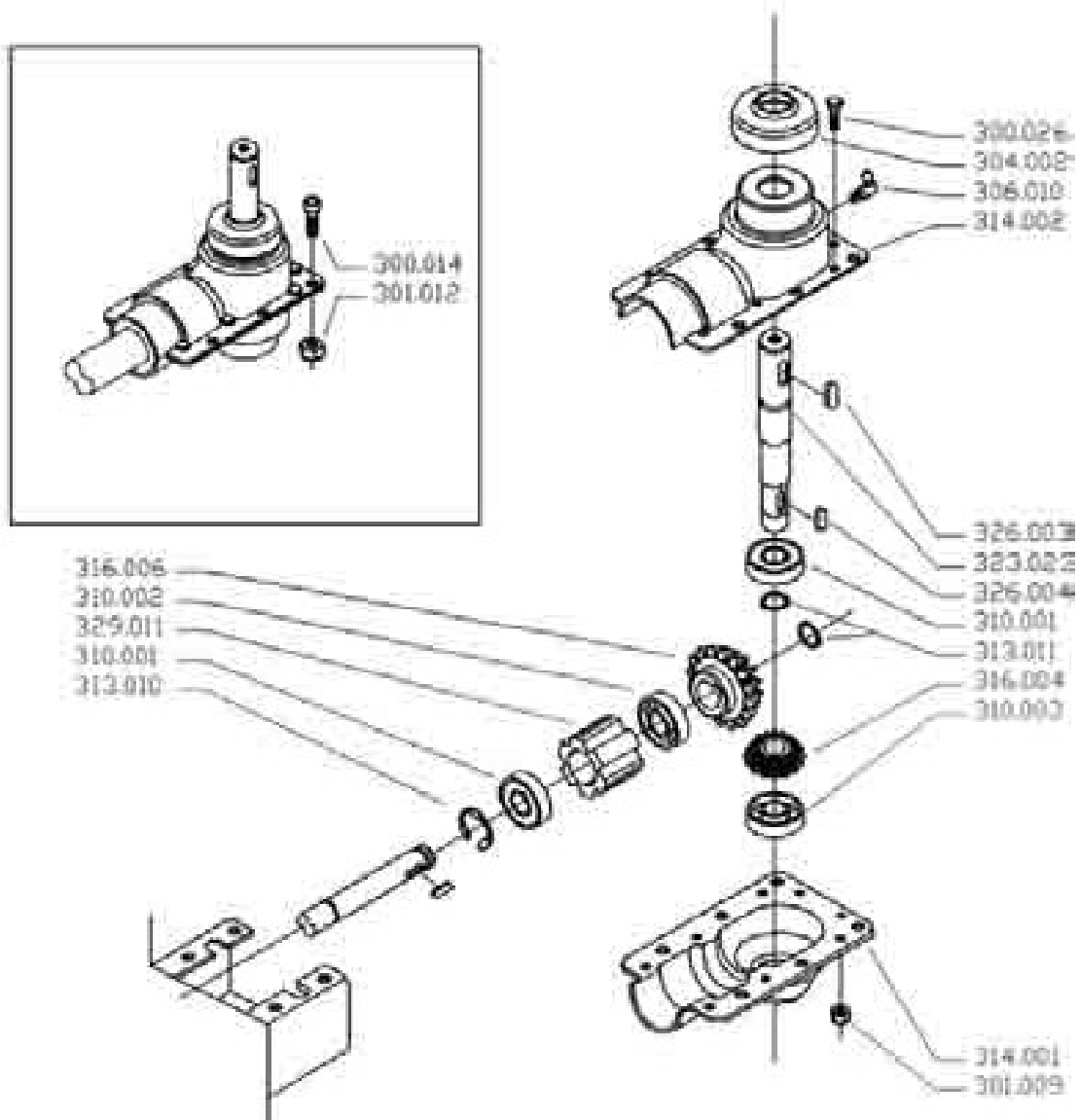


**CENTRAL GEAR BOX
SEE TABLE 1**

ITEM	Q.TY	DESCRIPTION
322.021	1	ASSEMBLED CENTRAL GEARBOX
323.028	1	UPPER SHAFT AGITATOR
326.003	5	KEY 8X7X20
309.001	2	OIL SEAL 35X52X7
310.002	6	BALL BEARING 25X52X15 (6205)
306.007	1	GREASE NIPPLE M6
304.026	1	ALUMINIUM FLANGE
316.007	1	CROWN GEAR Z32
301.052	1	SELF-LOCKING NUT PN 5 25X1,5
316.005	2	PINION Z16
313.011	3	SPLIT RING 7435 E25
313.017	4	SPLIT RING 7437 I52
309.002	2	OIL SEAL 25X52X7
323.027	1	LONG CENTRAL SHAFT
314.013	1	INT. GEAR HOUSING
314.014	1	EXT. GEAR HOUSING
300.200	1	OIL LEVEL CAP 14X1.5
300.201	1	ALUMINIUM GASKET 14X18X1,5
323.002	1	INPUT SHAFT
303.052	4	FLAT WASHER 6292 10X20 ST. S.
300.104	4	HEX. HEAD SCREW 10X30 UNI5739 ST. S.
300.003	2	HEX. HEAD SCREW 10X25
301.053	2	SELF-LOCK. NUT M10
303.015	4	WASHER 10X20 GALV.
300.040	12	FLAT HEAD SOCKET SCREW 8X20 UNI5933 GALV.
303.007	12	WASHER 8X17 UNI6592 GALV.
301.001	12	SELF-LOCK. NUT M8 GALV.
300.026	2	HEX. HEAD SCREW 6X16 UNI5739 GALV.
304.053	1	RUBBER RING
620.009	1	METAL RING
301.013	1	SELF LOCK. NUT M10 GALV.
619.033	1	LOWER AGITATOR (PTB)
619.034	1	LOWER AGITATOR PLATE (PTB)

LATERAL GEARBOX FOR DISASSEMBLED DISK

TAB. 2



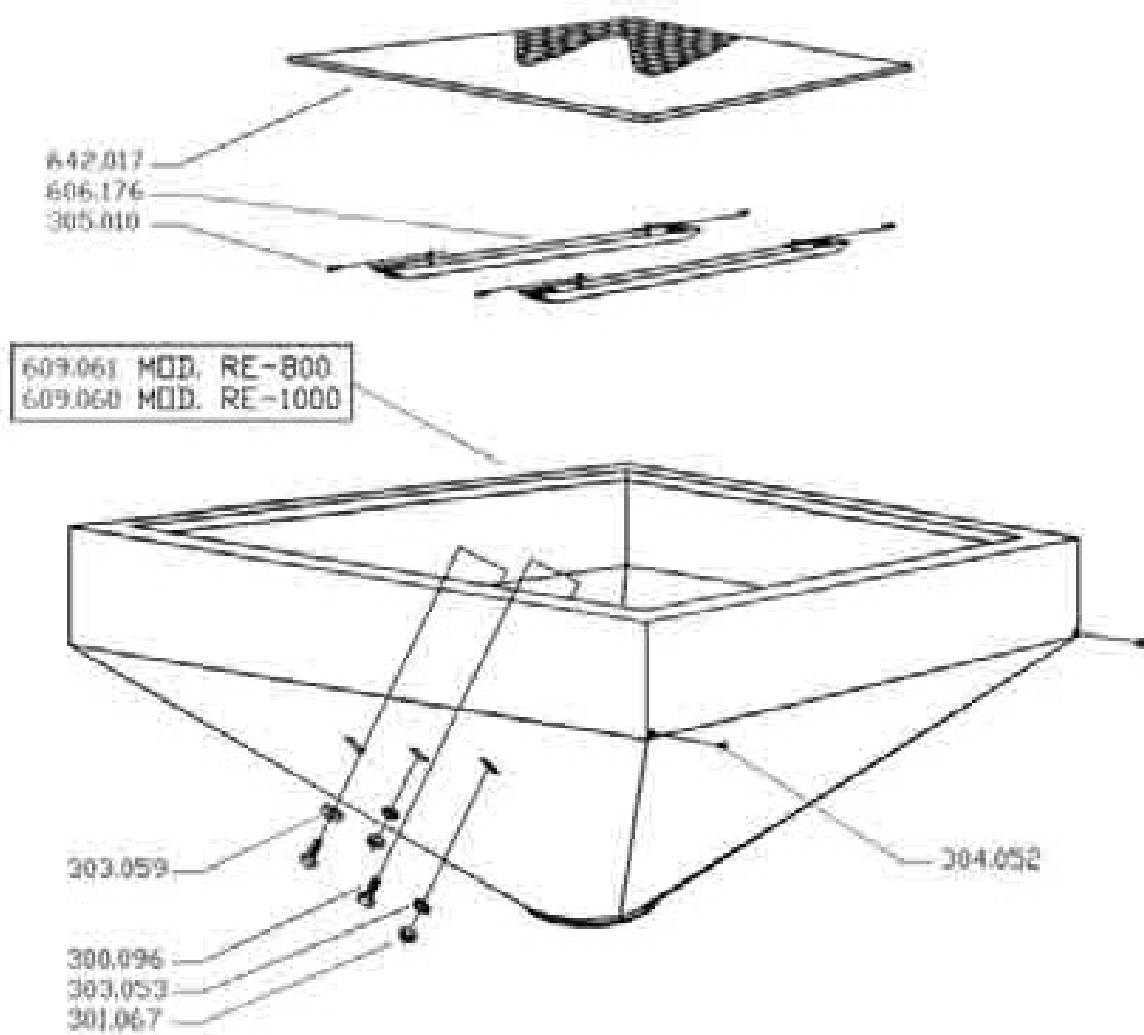
322.020
 RIDUTTORE LATERALE PER DISCO SMONTABILE
 LATERAL GEAR BOX
 REDUCTOR LATERAL
 BŔITIER LATĒRALE
 SEIT LICHES GETRIEBE
 БОКОВОЙ РЕДУКТОР

**LATERAL GEARBOX FOR DISASSEMBLED DISK
SEE TABLE 2**

ITEM	Q.TY	DESCRIPTION
322.020	1	LATERAL GEARBOX RE
316.006	1	PINION Z19
310.001	2	BALL BEARING 25X52X15 (6205 2RS)
310.002	1	BALL BEARING 25X52X15 (6205)
329.011	1	SPACER
313.011	2	SPLIT RING 7435 E25
326.003	1	KEY 8X7X20
301.009	8	SELF-LOCK. NUT M6 GALV.
304.002	1	DUST GUARD
306.010	1	GREASE NIPPLE 90° M8X1,25
300.026	8	HEX. HEAD SCREW 6X16
314.002	1	UPPER SHELL
323.023	1	OUTPUT SHAFT OF DISASSEMBLED DISK
326.004	1	KEY 6X6X20
316.004	1	PINION Z13
310.003	1	BALL BEARING 20X52X15 (6304)
314.001	1	LOWER SHELL
300.014	6	CYLINDRED HEAD SCREW 8X16 GALV.
301.012	6	NUT M8 GALV.

HOPPER

TAB. 3

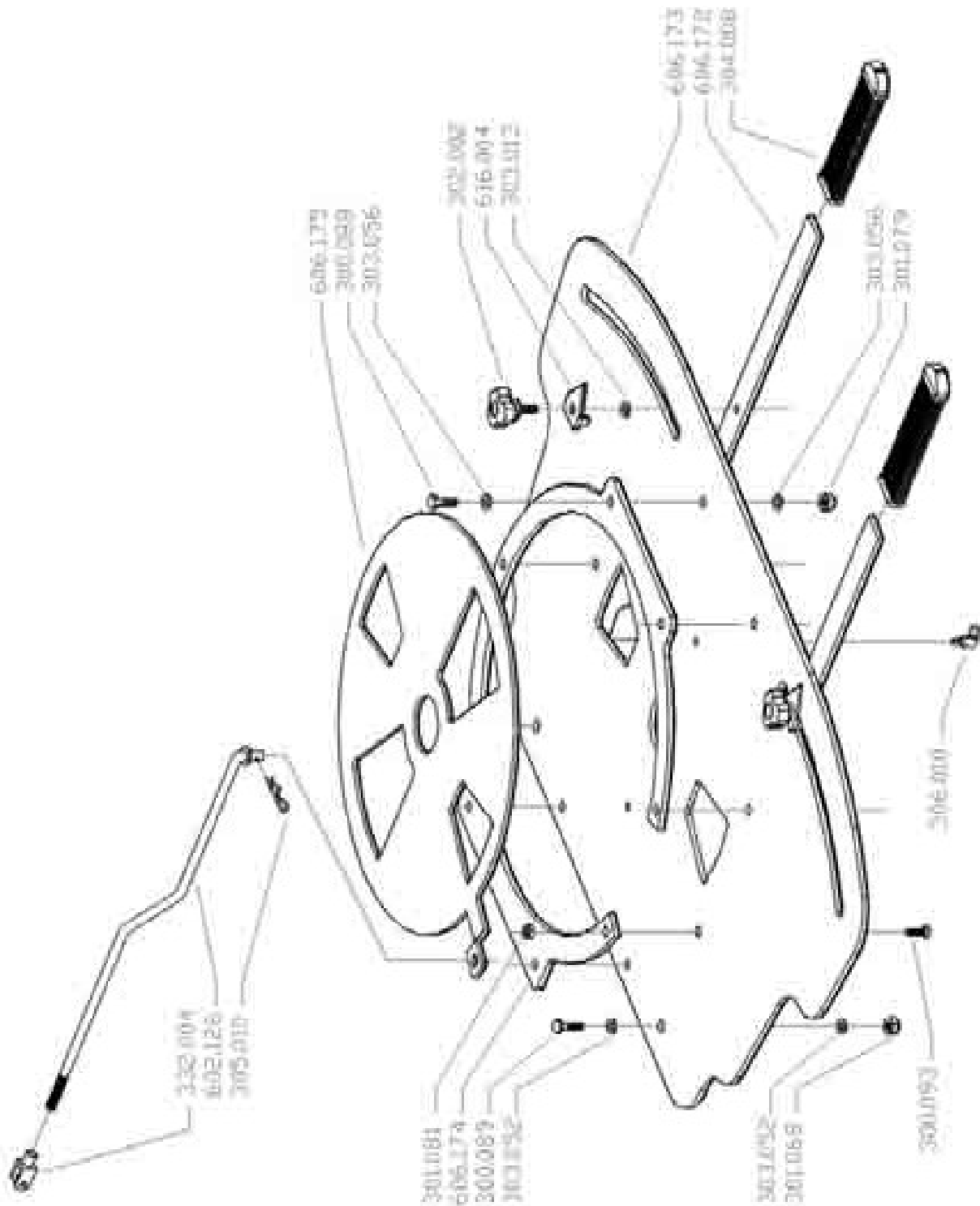


**HOPPER
SEE TABLE 3**

<i>ITEM</i>	<i>Q.TY</i>	<i>DESCRIPTION</i>
609.061	1	HOPPER RE 800
609.060	1	HOPPER RE 1000
300.096	8	CUP SQUARE HEAD SCREW 10X25 ST.S
303.053	8	WASHER 10X30 ST.S
303.059	4	WASHER 12X36 ST.S
301.067	8	NUT M10 ST.S
304.052	2	RUBBER CAP DIAMETER: 14 MM
606.176	2	INNER STIFFENING BAR
305.010	4	R PIN
642.017	1	PROTECTION GRID

OPENING ASSEMBLY

TAB. 4

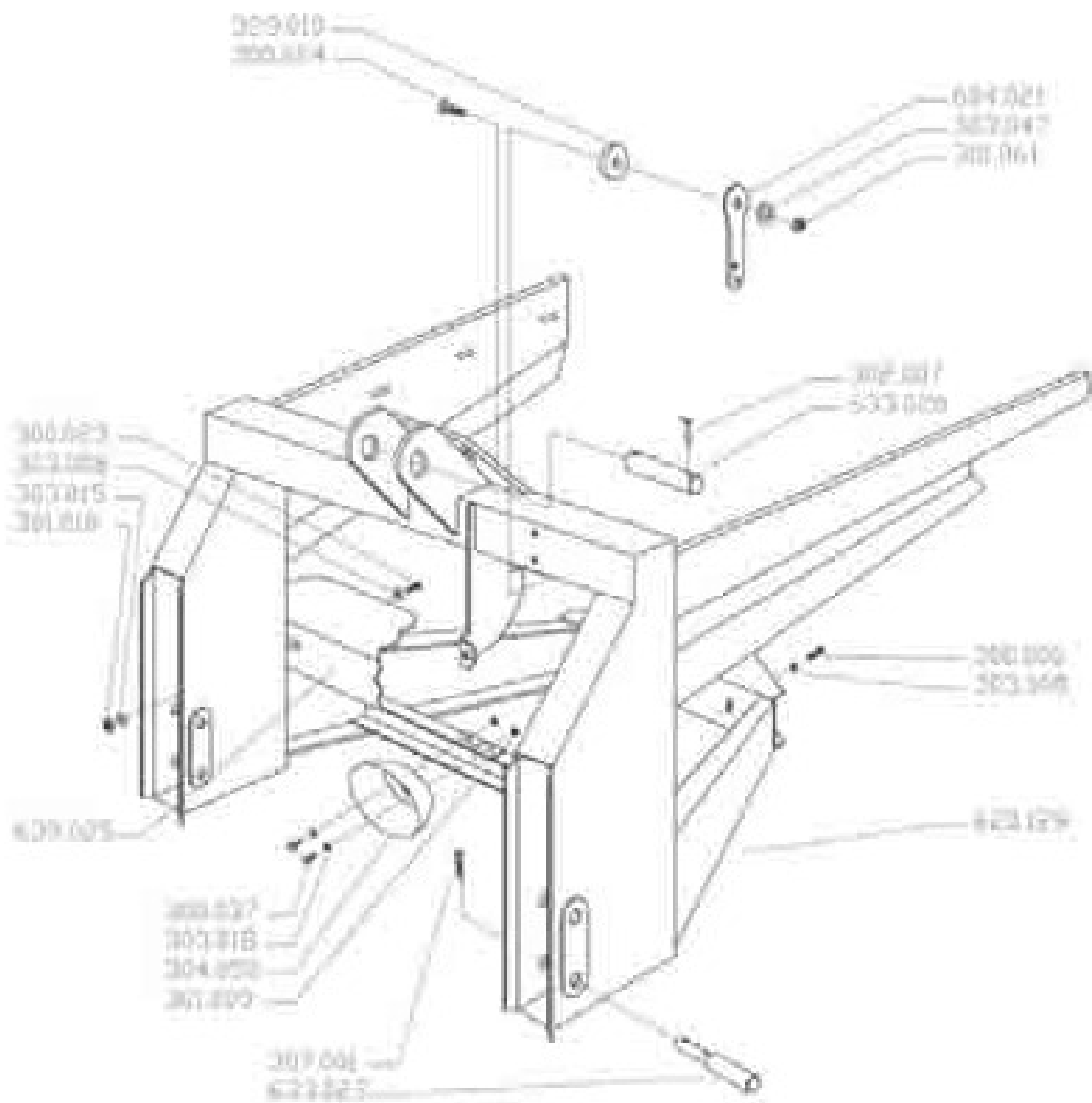


**OPENING UNIT/PLATE
SEE TABLE 4**

ITEM	Q.TY	DESCRIPTION
300.088	4	HEX. HEAD SCREW 8X25 ST.S
300.093	3	FLAT HEAD SOCKET SCREW 6X20 ST.S
303.056	8	WASHER 8X16 ST.S
301.079	4	SELF-LOCK. NUT M8 ST.S
606.173	1	OPENING PLATE ST.S
606.172	2	LEVERS ST.S
606.175	1	OPENING DISK ST.S
606.174	1	SPACER
602.126	1	OPENING ROD
305.010	1	R PIN
332.004	1	MALE YOKE END M10 W/THREAD & HOLE GALV.
332.006	1	YOKE CLIP 10X20 GALV.
300.089	2	HEX. HEAD SCREW 10X25 ST.S
303.052	4	WASHER 10X20 ST.S
301.068	2	SELF-LOCK. NUT M10 ST.S
301.081	3	NUT M6 ST.S
304.008	2	GRIP 25X5
302.002	2	KNOB 8X25
616.004	2	ADJUSTING INDEX
306.010	2	GREASE NIPPLE 90° 8X1,25
303.013	2	WASHER 8X24 GALV.

FRAME

TAB. 5

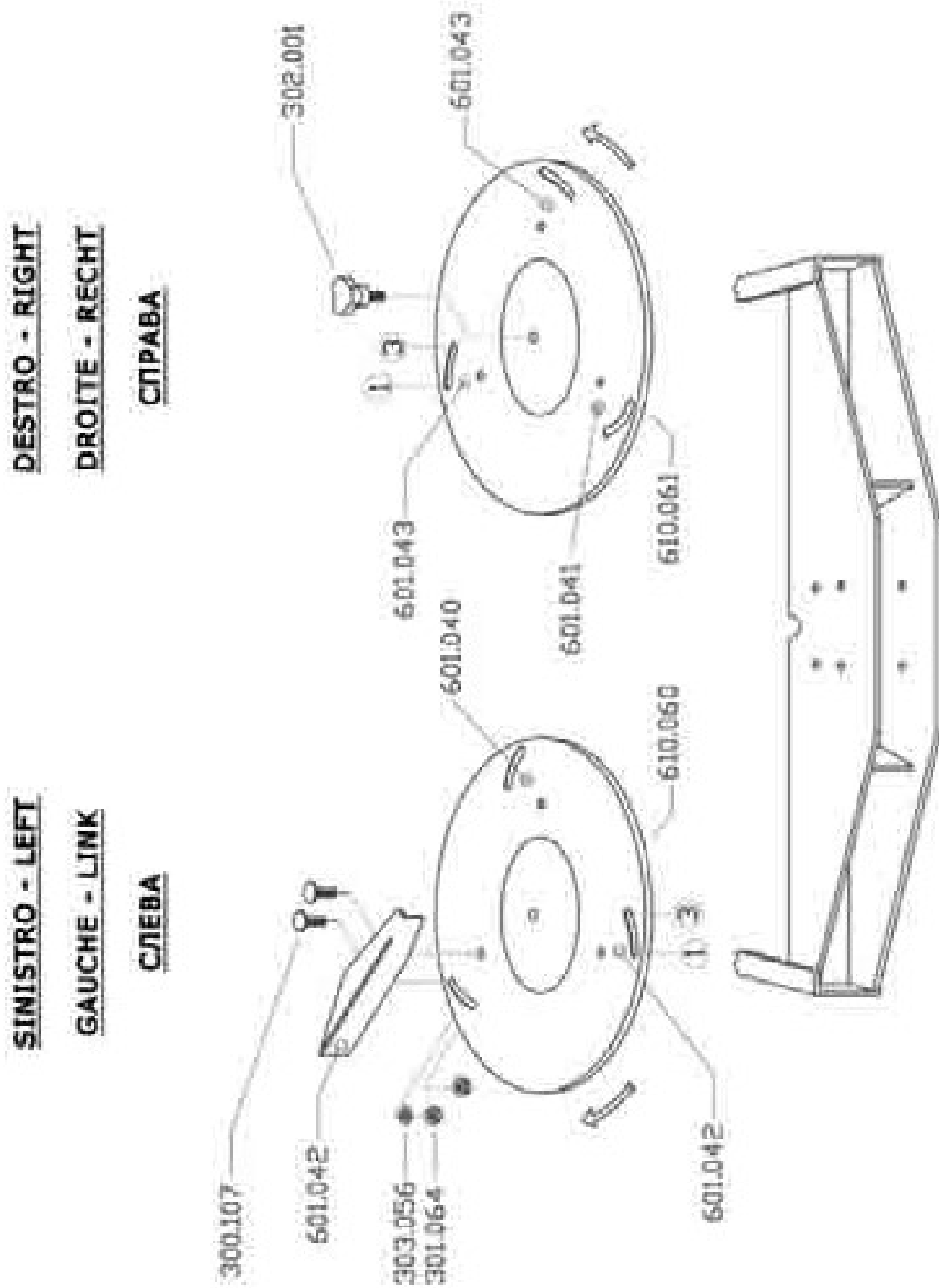


**FRAME
SEE TABLE 5**

<i>ITEM</i>	<i>Q.TY</i>	<i>DESCRIPTION</i>
620.129	1	FRAME RE
300.023	2	CUP SQUARE HEAD SCREW 10X20
303.008	4	WASHER 12X24
301.010	2	NUT M10
604.021	1	SHORT LEVER
329.010	1	NYLON SPACER
300.024	3	HEX. HEAD SCREW 12X35 UNI5739 GALV.
303.047	4	WASHER 12X36
301.061	2	SELF-LOCK. NUT M12
633.020	1	UPPER LINK PIN 25X144 GALV.
302.007	2	LYNCH PIN D.8 GALV.
633.022	2	LOWER LINK PIN 22-28 GALV.
307.001	2	R PIN
300.006	2	HEX. HEAD SCREW 12X60 GALV.
303.008	2	WASHER 12X24 GALV.

SPREADER DISKS

TAB. 6



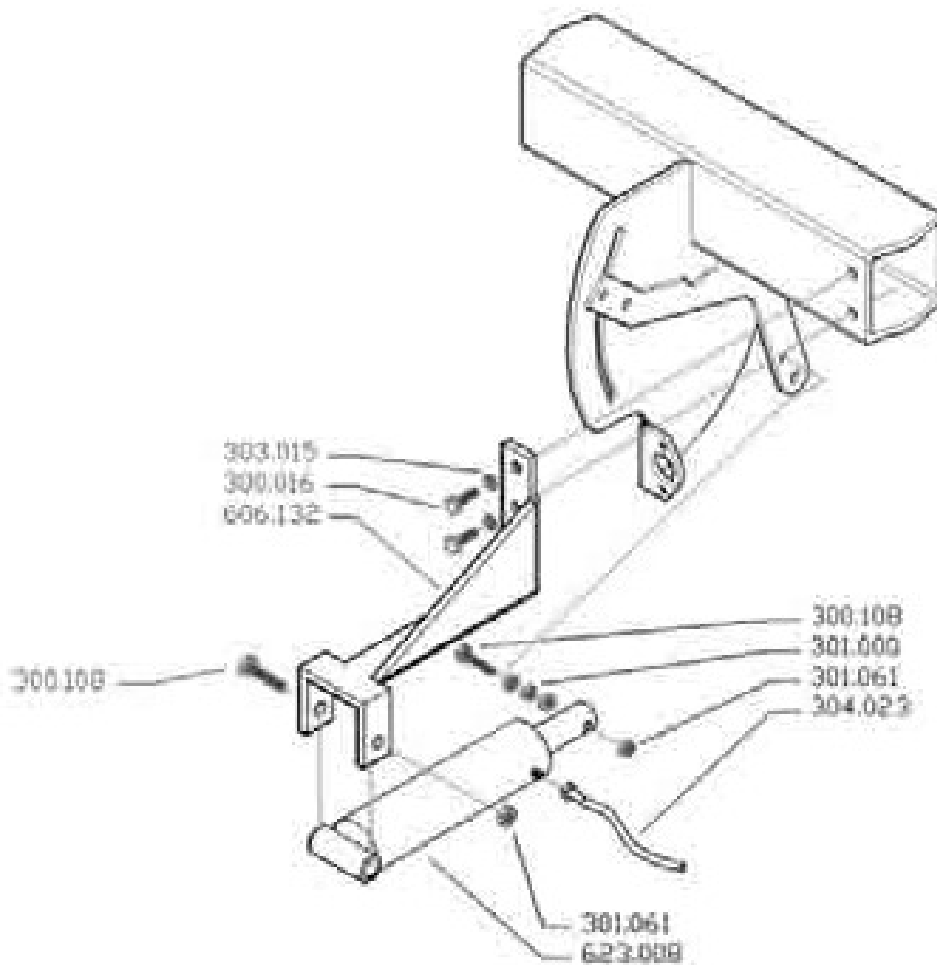
**DISTRIBUTION DISKS
SEE TABLE 6**

<i>ITEM</i>	<i>Q.TY</i>	<i>DESCRIPTION</i>
610.060	1	ST.S. DISTRIBUTION DISK W/BUSH
610.061	1	ST.S. DISTRIBUTION DISK W/BUSH
610.062	1	ST.S. DISTRIBUTION DISK W/VANES
610.063	1	ST.S. DISTRIBUTION DISK W/VANES
300.107	12	CUP SQUARE HEAD SCREW 8X16 ST.S
301.064	12	NUT M8 ST.S
303.056	6	WASHER 8X16 ST.S
302.001	2	LOBE KNOB D.60 M10X20
601.040	1	LEFT ST.S VANE
601.042	2	LEFT ST.S BENT VANE
601.041	1	RIGHT ST.S VANE
601.043	2	RIGHT ST.S BENT VANE

HYDRAULIC CYLINDER

TAB. 7

617.013 — APERTURA IDRAULICA
HYDRAULIC OPENING SYSTEM
OUVERTURE HYDRAULIQUE



**HYDRAULIC CYLINDER
SEE TABLE 7**

<i>ITEM</i>	<i>Q.TY</i>	<i>DESCRIPTION</i>
619.013	1	HYDRAULIC OPENING SYSTEM
606.132	1	CYLINDER SUPPORT
623.008	1	HYDRAULIC CYLINDER
304.023	1	FLEXIBLE HOSE
300.108	2	HEX. HEAD SCREW 12X90 GALV.
301.000	3	NUT M12 GALV.
301.061	2	SELF-LOCK. NUT M12 GALV.
300.016	2	HEX. HEAD SCREW 12X20 GALV.
303.015	2	WASHER 10X20 GALV.

