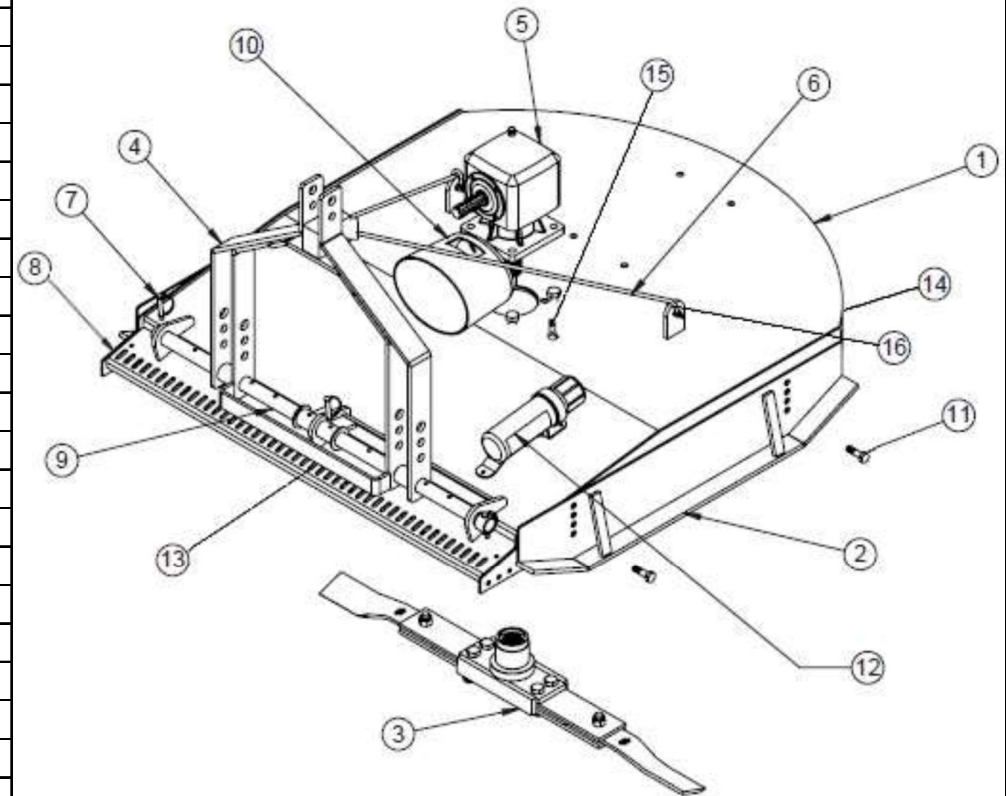


M RANGE ROTARY CUTTER

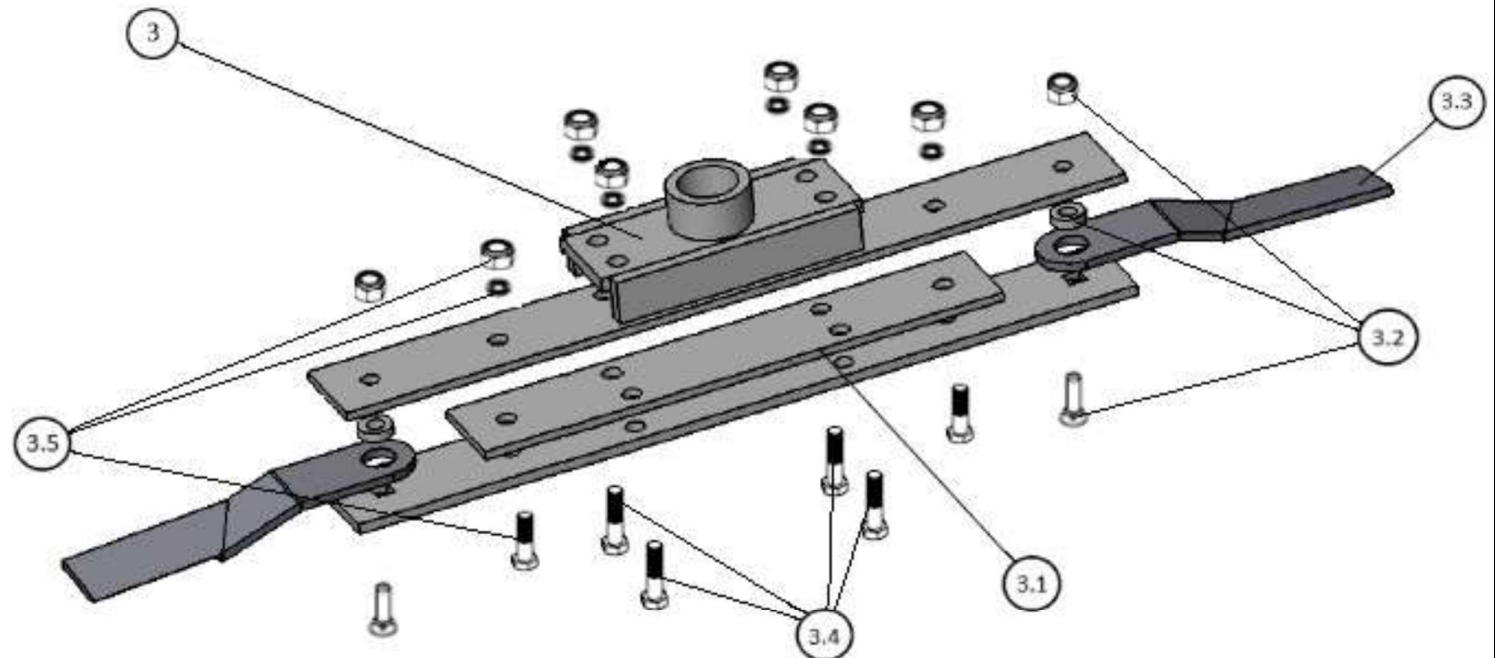


Ref	Description	Part #			Qty
		150	180	210	
1	Deck assembly	100.208	100.204	100.200	1
2	Skids (each)	100.301	100.205	100.201	2
3	Cutter Bar 'T' Piece assembly	100.235			1
3.1	Three (3) piece Cutter Bar assembly	100.210a	100.206a	100.202a	1
3.2	Blade Bolt Kit (suit pair of blades)	100.135			1
3.3	Blade Kit (pair of blades)	100.134			1
3.4	Cutter Bar 'T' Piece Bolt Kit	100.345			1
3.5	Cutter Bar Bolt Kit	100.346			1
4	Tower assembly	100.239b			1
5	Gearbox (complete)	100.213		100.212	1
6	Tower Chain	100.211	100.207	100.203	1
7	Tower bar pin	100.241			7
8	Front side chains				2
9	Tower bar	100.240b			1
10	Input shaft Cover	100.247b			1
11	Skid bolt kit	100.730a	100.730b		1
12	Manual Holder	100.141			1
13	Front Chain Guard (chain only)	100.252c	100.252b	100.252a	1
14	Rear Chain Guard (chain only)	100.253c	100.253b	100.253a	1
15	Gearbox Bolt Kit	100.213d			1
16	Chain Joiner assembly (set of shackles)	100.251			4



M RANGE ROTARY CUTTER

Ref	Description	Part #			Qty
		150	180	210	
3	Cutter Bar 'T' Piece assembly	100.235			1
3.1	Three (3) piece Cutter Bar assembly	100.210a	100.206a	100.202a	1
3.2	Blade Bolt Kit (suit pair of blades)	100.135			1
3.3	Blade Kit (pair of blades)	100.134			1
3.4	Cutter Bar 'T' Piece Bolt Kit	100.345			1
3.5	Cutter Bar Bolt Kit	100.346			1

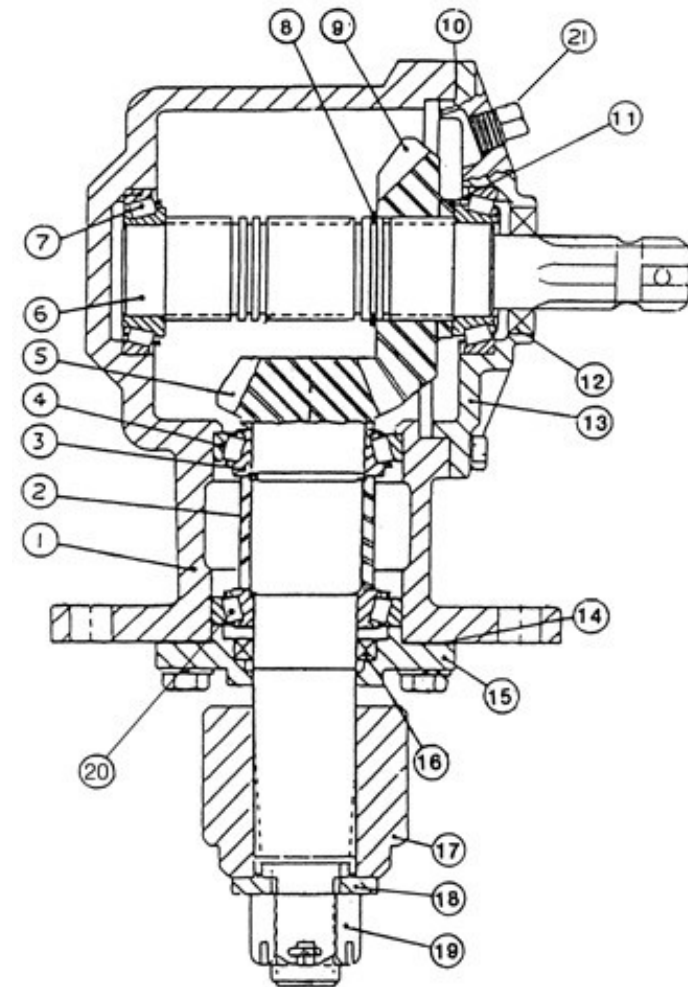


M RANGE ROTARY CUTTER



Part # 100.213. M1500 / M1800 75hp Gearbox (complete).

Ref	Description	Part #
1	75hp Main housing	100.214
2	75hp Spacer tube	100.255
3	75hp Bearing (cone) top and bottom	100.218
4	75hp Bearing (cone) top	100.219
5	75hp Pinion (15 tooth output)	100.217
6	75hp Input shaft (1 ³ / ₈ x 6 spline)	100.220
7	75hp Cup and cone assembly	100.223
8	75hp Retaining ring (input)	100.224
9	75hp Pinion (29 tooth input)	100.222
10	75hp Gasket/shim	100.225
11	75hp Spacer	100.226
12	75hp Input seal	100.227
13	75hp Input cap	100.228
14	75hp Gasket/shim	100.229
15	75hp Lower housing seal	100.230
16	75hp Output seal	100.231
17	75hp Hub	100.234
18	Flat washer	100.256
19	Castellated Nut (1" x 14 TPI)	100.236
20	75hp Bearing (cup) bottom	100.233
21	Breather	100.232

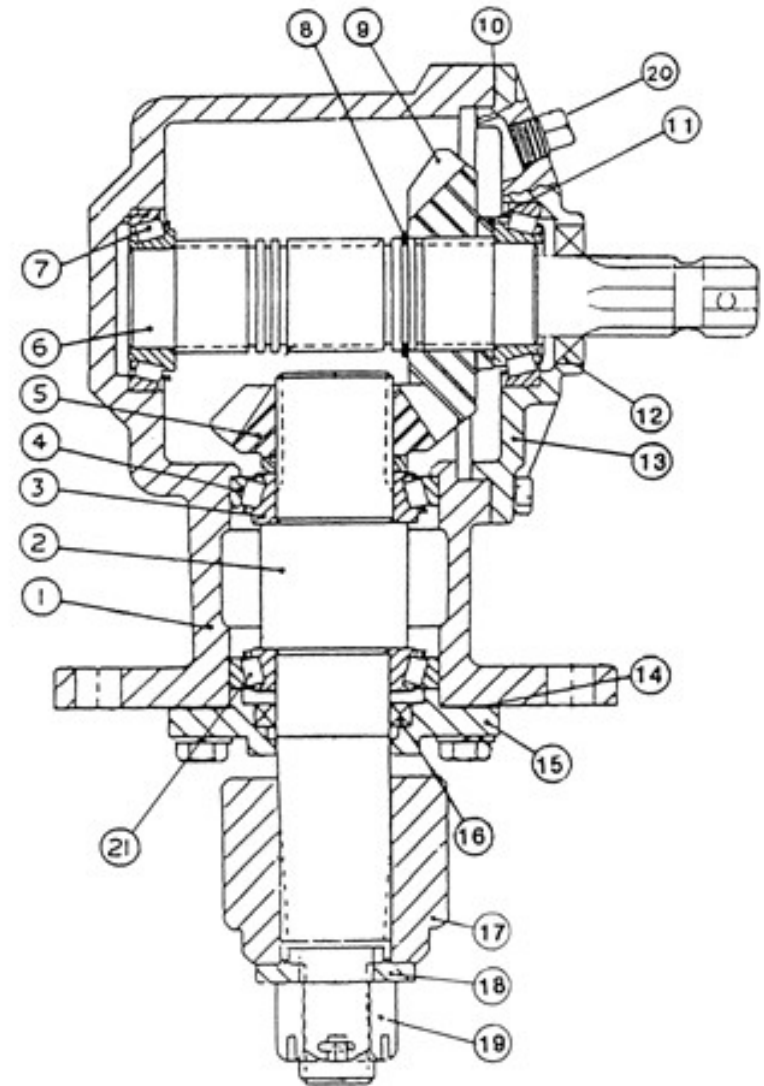


M RANGE ROTARY CUTTER

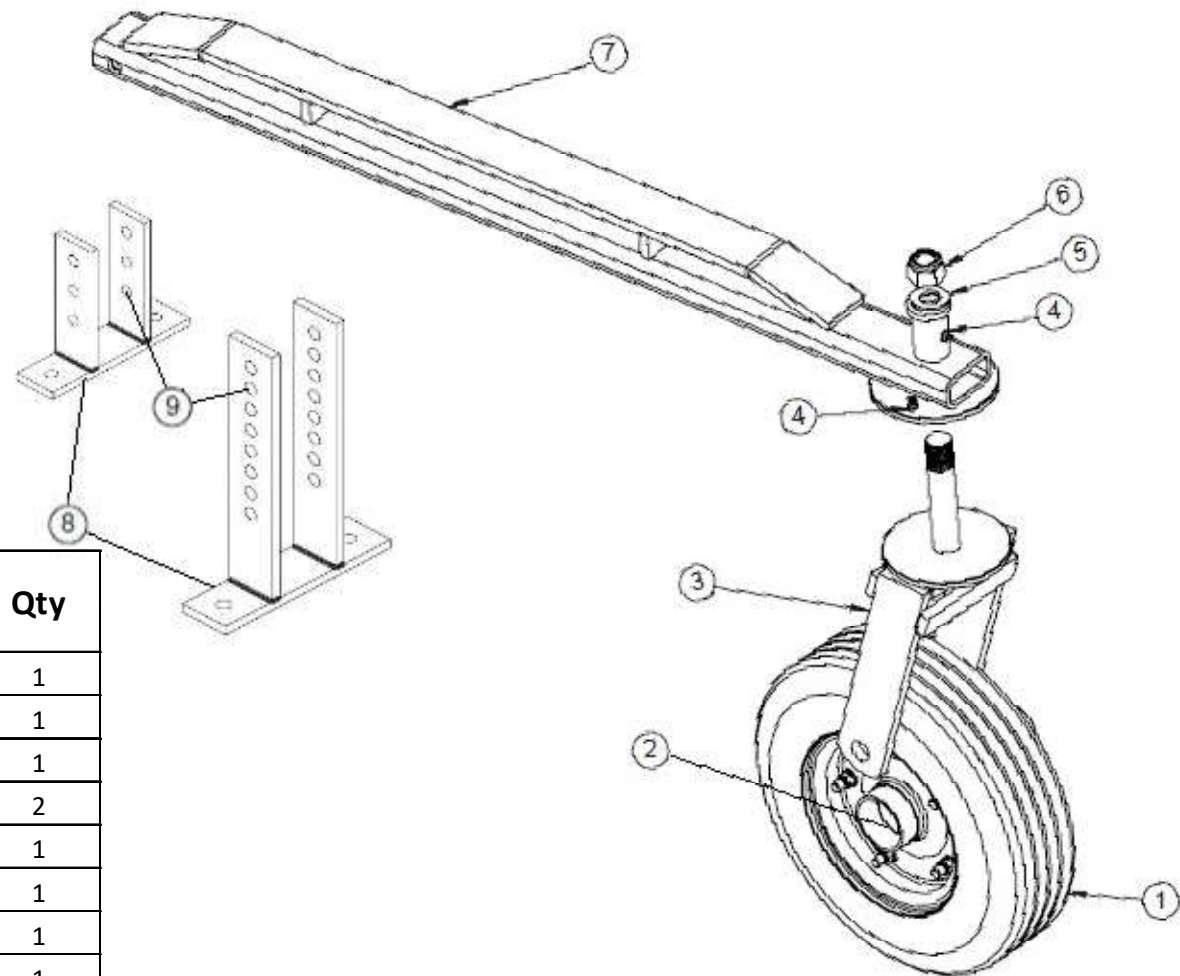


Part # 100.212. M2100 75hp Gearbox (complete).

Ref	Description	Part #
1	75hp Main housing	100.214
2	75hp Output shaft (M2100)	100.215
3	75hp Bearing (cone) top and bottom	100.218
4	75hp Bearing (cone) top	100.219
5	75hp Pinion - 13 tooth output (M2100)	100.216
6	75hp Input shaft (1 3/8 x 6 spline)	100.220
7	75hp Cup and cone assembly	100.223
8	75hp Retaining ring (input)	100.224
9	75hp Pinion - 19 tooth input (M2100)	100.221
10	75hp Gasket/shim	100.225
11	75hp Spacer	100.226
12	75hp Input seal	100.227
13	75hp Input cap	100.228
14	75hp Gasket/shim	100.229
15	75hp Lower housing seal	100.230
16	75hp Output seal	100.231
17	75hp Hub	100.234
18	Flat washer	100.256
19	Castellated Nut (1" x 14 TPI)	100.236
20	Breather	100.232
21	75hp Bearing (cup) bottom	100.233



M RANGE ROTARY CUTTER



Ref	Description	Part #	Qty
1	Solid Wheel only	100.128a	1
2	Hub assembly	100.129	1
3	Wheel fork only	100.130a-t	1
4	Grease nipple	100.733	2
5	Fork washer	100.131d	1
6	Fork lock nut	100.131c	1
7	Main arm/boom	100.131b	1
8	Mounting bracket	100.131a	1
9	Mounting bracket bolt kit	100.343	1