

CENTRIFUGAL PULL TYPE FERTILIZER SPREADER MOD. PTB

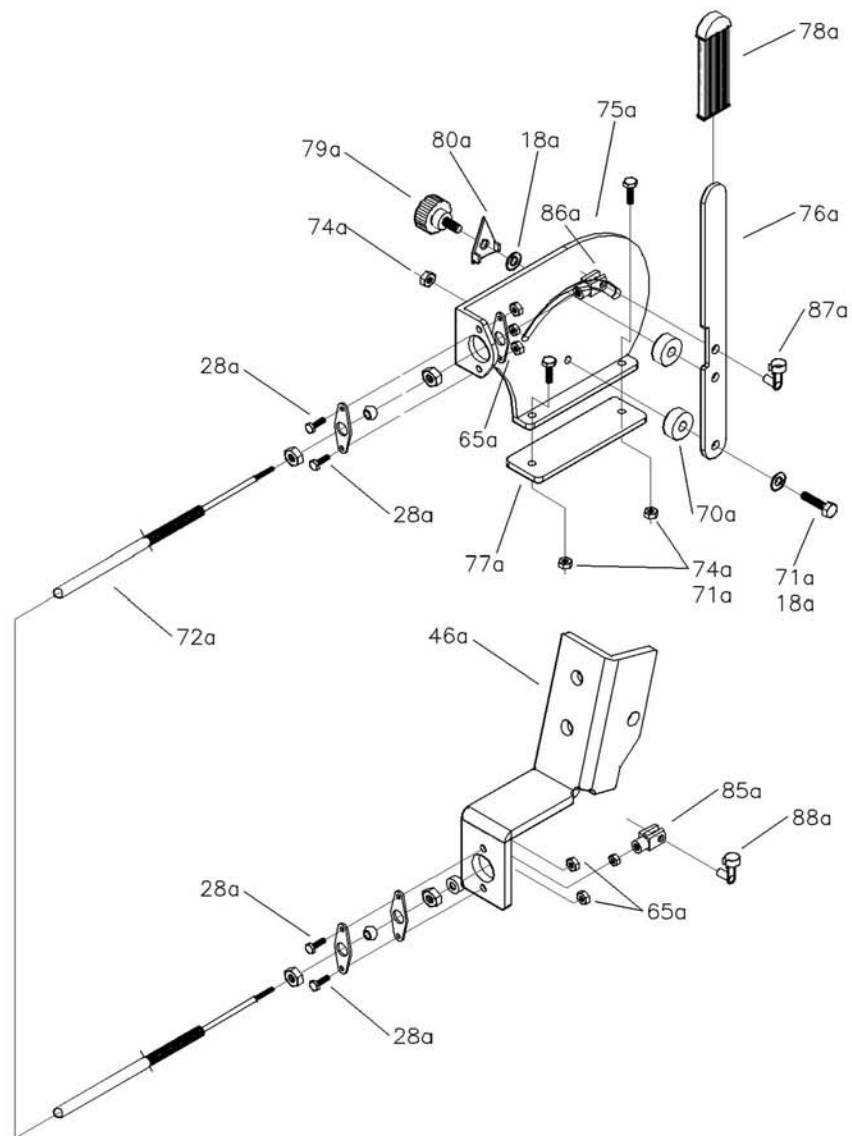
UPDATING APRIL 2010

TRADE MARK



Cosmo S.R.L.
Loc. Roata Raffo 64
12022 Busca Cuneo ITALY
Tel. +39 0171 946654/55 Fax +39 0171 946723
www.cosmosrl.com - imcosmo@cosmosrl.com

OPENING CABLE - 620.040

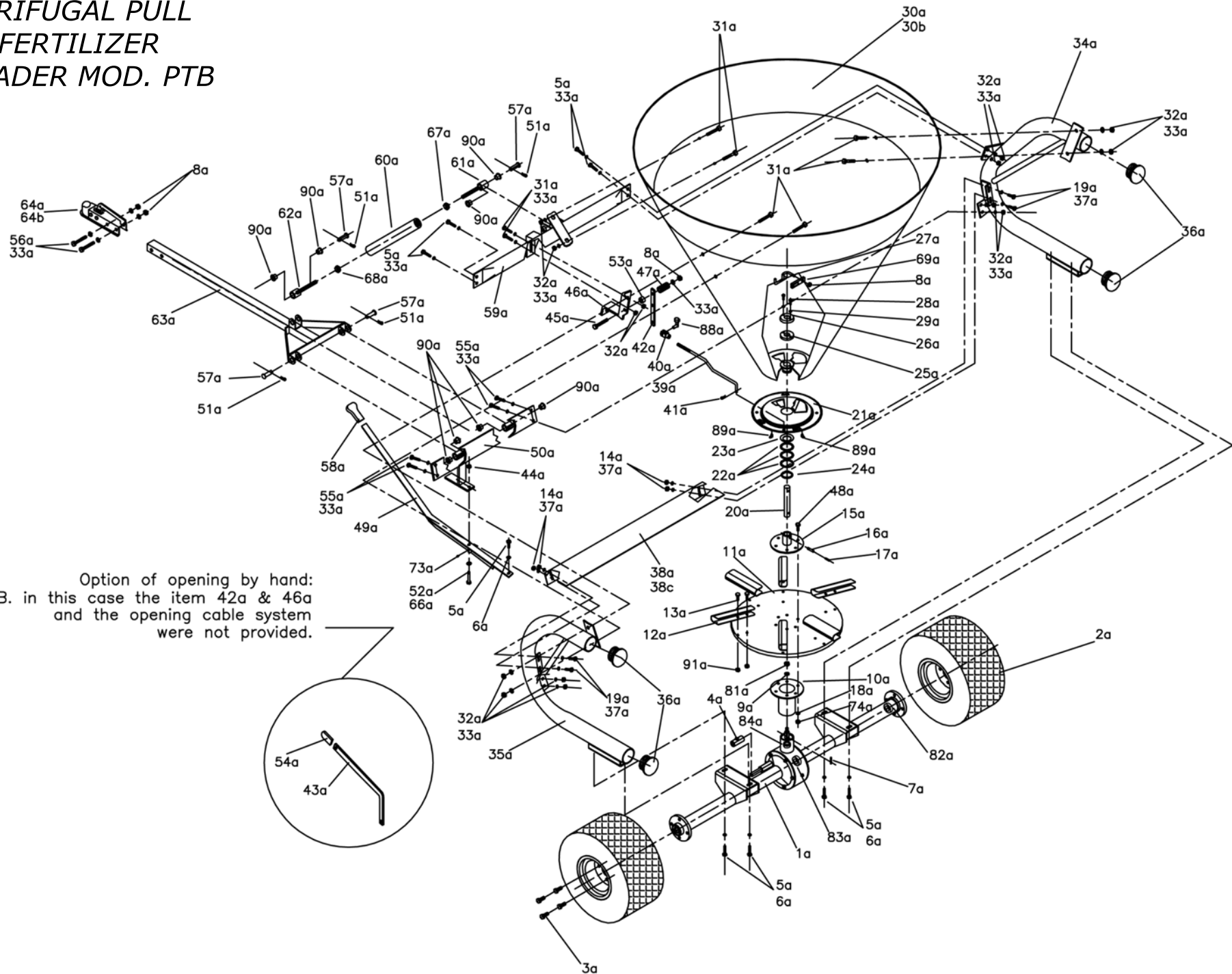


REF.	QTY	CODE	DESCRIPTION
1a	1	620.037	AXLE WITH BUSHING
2a	2	620.007	TYRE 20X10.00 - 8 D266
3a	8	300.006	GALVANIZED HEX. HEAD SCREW 12X30 UNI5739
4a	1	325.017	RELEASE BUSHING
5a	9	300.003	GALVANIZED HEX. HEAD SCREW 10X25 UNI5739
6a	5	303.025	GALVANIZED WASHER 10X30 UNI6593
7a	1	313.016	KEY 6X6X30
8a	4	301.013	GALVANIZED SELF-LOCKING NUT M10
9a	1	303.019	WASHER 14X48X4
10a	1	325.018	ROTARY BUSHING
11a	1	610.043	ST.STEEL SPREADING DISC
12a	6	601.026	ST. STEEL VANE
13a	12	300.030	ST. STEEL CUP SQUARE SCREW 8X16 QH3 UNI 5731
14a	4	301.012	GALVANIZED NUT M8
15a	1	325.001	UPPER DISC BUSHING
16a	1	305.001	SPRING PIN 1481 8X40
17a	1	305.003	SPRING PIN 1481 5X40
18a	8	303.007	GALVANIZED WASHER 8X17 UNI6592
19a	4	300.029	GALVANIZED HEX. HEAD SCREW 8X20 UNI5739
20a	1	330.005	ENTRAINER
21a	1	610.011	ST. STEEL ADJUSTING DISC
22a	3	303.012	WASHER PS56X70X0,5
23a	1	303.031	DISC SPRING 79,5X55,5X0,8
24a	1	313.012	RETAINING RING M55 UNI7435
25a	2	304.053	RUBBER WASHER - 5 MM THICK
26a	1	620.009	METAL RING
27a	1	619.033	LOWER AGITATOR
28a	6	300.037	GALVANIZED HEX. HEAD SCREW 6X20 UNI5739
29a	2	303.014	GALVANIZED WASHER 6X12 UNI6592
30a	1	609.030	PTB 430 HOPPER
30b	1	609.031	PTB 560 HOPPER
31a	8	300.043	GALVANIZED CUP SQUARE SCREW 10X25 UNI5739
32a	16	301.010	GALVANIZED NUT M10 5588
33a	29	303.015	GALVANIZED WASHER 10X20 UNI6592
34a	1	613.020	RIGHT FRAME TUBE
35a	1	613.021	LEFT FRAME TUBE
36a	4	612.003	FRAME RUBBER CAP DIAM 75 MM
37a	8	303.013	GALVANIZED WASHER 8X24 UNI6593
38a	1	639.013	IRON REAR SHIELD
38c	1	639.024	ST. STEEL REAR SHIELD 15/10 (optional)
39a	1	602.016	DISC OPENING TIE ROD WITH WASHER
40a	1	332.004	TIE ROD YOKE 10X20 M10
41a	1	305.008	BEARING R3 ZB
42a	1	620.012	LEVER FOR CABLE OPENING SYSTEM
43a	1	620.013	LEVER FOR MANUAL OPENING SYSTEM
44a	1	301.061	GALVANIZED NUT M12
45a	1	300.085	GALVANIZED HEX. HEAD SCREW 10X90 UNI5739

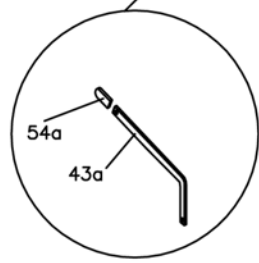
46a	1	620.010	CABLE SUPPORT
47a	1	617.002	SPRING 40X20X10
48a	6	300.050	GALVANIZED HEX. HEAD SCREW 8X25 UNI5739
49a	1	620.067	RELEASE LEVER
50a	1	613.050	LOWER CROSSPIECE
51a	4	307.001	SPLIT COTTER PIN 4,5 MM
52a	1	300.084	GALVANIZED HEX. HEAD SCREW 12X70 UNI5739
53a	1	325.022	NYLON BUSHING 10 MM HOLE
54a	1	304.028	HANDGRIP 20X10 FOR MANUAL OPENING SYSTEM
55a	4	300.013	GALVANIZED HEX. HEAD SCREW 10X30 UNI5739
56a	2	300.020	GALVANIZED HEX. HEAD SCREW 10X70 UNI5737
57a	4	633.024	PIVOT WITH WASHER
58a	1	304.014	HANDGRIP 30X10
59a	1	613.051	UPPER CROSSPIECE
60a	1	606.149	TUBE LEVEL STOP
61a	1	606.146	RIGHT TIE ROD WITH BUSHING
62a	1	606.147	LEFT TIE ROD WITH BUSHING
63a	1	620.068	TOW TUBE
64a	1	620.080	1"7/8 COUPLER
64b	1	620.090	2" COUPLER
65a	4	301.009	SELF-LOCKING NUT M6
66a	1	303.026	GALVANIZED WASHER 13X25 UNI6592
67a	1	301.075	NUT M20 RIGHT THREAD
68a	1	301.073	NUT M20 LEFT THREAD
69a	1	619.034	LOWER AGITATOR PLATE
70a	2	329.008	NYLON SPACER 9X25X10
71a	3	300.069	GALVANIZED HEX. HEAD SCREW 8X30 UNI5739
72a	1	620.000	CABLE 2200 mm LENGHT
73a	1	306.007	GREASE NIPPLE M6
74a	9	301.001	SELF-LOCKING NUT M8
75a	1	603.002	CABLE SUPPORTING PLATE - TRACTOR SIDE
76a	1	604.014	LEVER BRACKET - TRACTOR SIDE
77a	1	603.001	FIXING SUPPORT PLATE - TRACTOR SIDE
78a	1	304.015	HANDGRIP 20X5
79a	1	302.003	KNOB M 8X25
80a	1	616.004	ADJUSTING ARROW
81a	1	301.007	GALVANIZED SELF-LOCKING NUT M14
82a	4	310.001	BEARING 6205 2 RS 25-52-15
83a	1	310.002	BEARING 6205 25-52-15
84a	2	310.016	BEARING 6304 2 RS 20-52-15
85a	1	332.009	YOKE M7 WITH 10 MM HOLE
86a	1	332.010	YOKE M7 WITH 8 MM HOLE
87a	1	332.007	CLIPS 8X19
88a	2	332.006	CLIPS 10X23
89a	2	306.010	GREASE NIPPLE 90° 8X1,25 ZB
90a	2	325.024	FLANGE BEARING
91a	12	301.079	ST. STEEL SELF-LOCKING NUT M8

The cable lenght (Ref.72a) can be changed on customer request.

**CENTRIFUGAL PULL
TYPE FERTILIZER
SPREADER MOD. PTB**



Option of opening by hand:
N.B. in this case the item 42a & 46a
and the opening cable system
were not provided.



WHOLE SPREADING RIGHT-LEFT

The centrifugal pull type fertilizer spreaders are provided with a stainless steel adjusting disc to adjust the spreading (ref.21a).

Moreover, you can spread also only from one side and you can set the quantity of fertilize up that you need to spread.

To make a whole spreading you have to locate the opening rod (ref.39a) on the hole indicated with **B**, otherwise to spread just on the right side or just on the left side you have to locate the opening rod on the hole indicated with **A** and **C**.



Stainless steel adjusting disc
Ref. 21a



Opening rod
Ref. 39a

