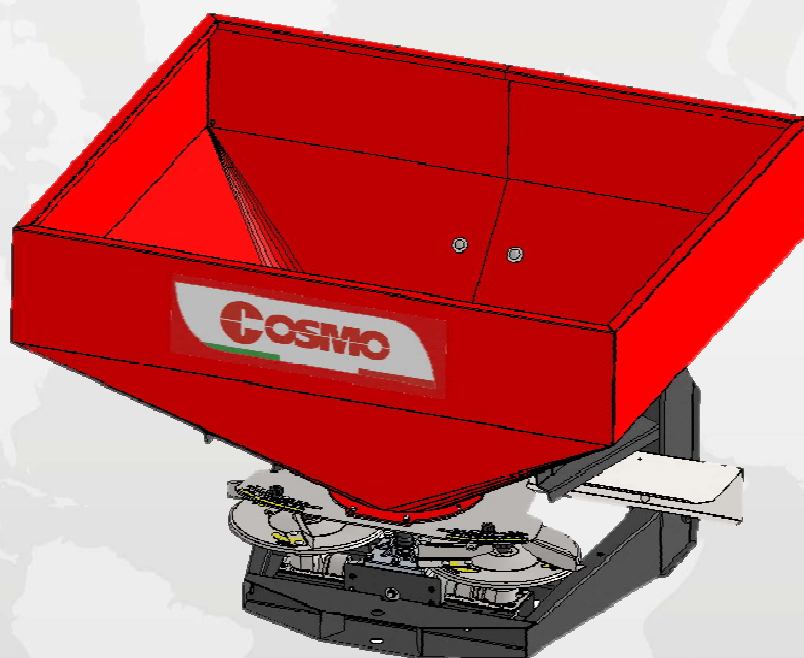




Cresciamo insieme | Let's grow together

Fertilizer Spreader

RE-A / REX-A / RE-F / REF-X



OWNER'S MANUAL

Read the Operator's manual entirely before using the machine.

Edition January 2020 – Code 900.111



EC declaration of conformity



The Company

COSMO s.r.l.

headquartered in Via Laghi di Avigliana, 117 – Busca (CN) - ITALY

DECLARES FULLY UNDER OWN RESPONSIBILITY THAT THE PRODUCT:

TIPE: **CENTRIFUGAL SPREADER - 2 DISCS**
MODEL: **RE-A / REX-A / RE-F / RE-F INOX**
SERIAL NUMBER
CONSTRUCTION YEAR:

conforms to the relevant basic safety and health requirements of:

EU Directive 2006/42/EC;

2014/30/EU (Electromagnetic Compatibility Directive - where applicable).

For the relevant implementation of the safety and health requirements mentioned in the EC directive, the following standards are taken into account:

UNI EN ISO 12100:2010

UNI EN ISO 4254-1:2015

UNI EN ISO 4254-8:2018

UNI EN ISO 13857:2020

UNI EN 13739-2:2011

ISO 11684:1995.

The technical file of the product is deposited at:

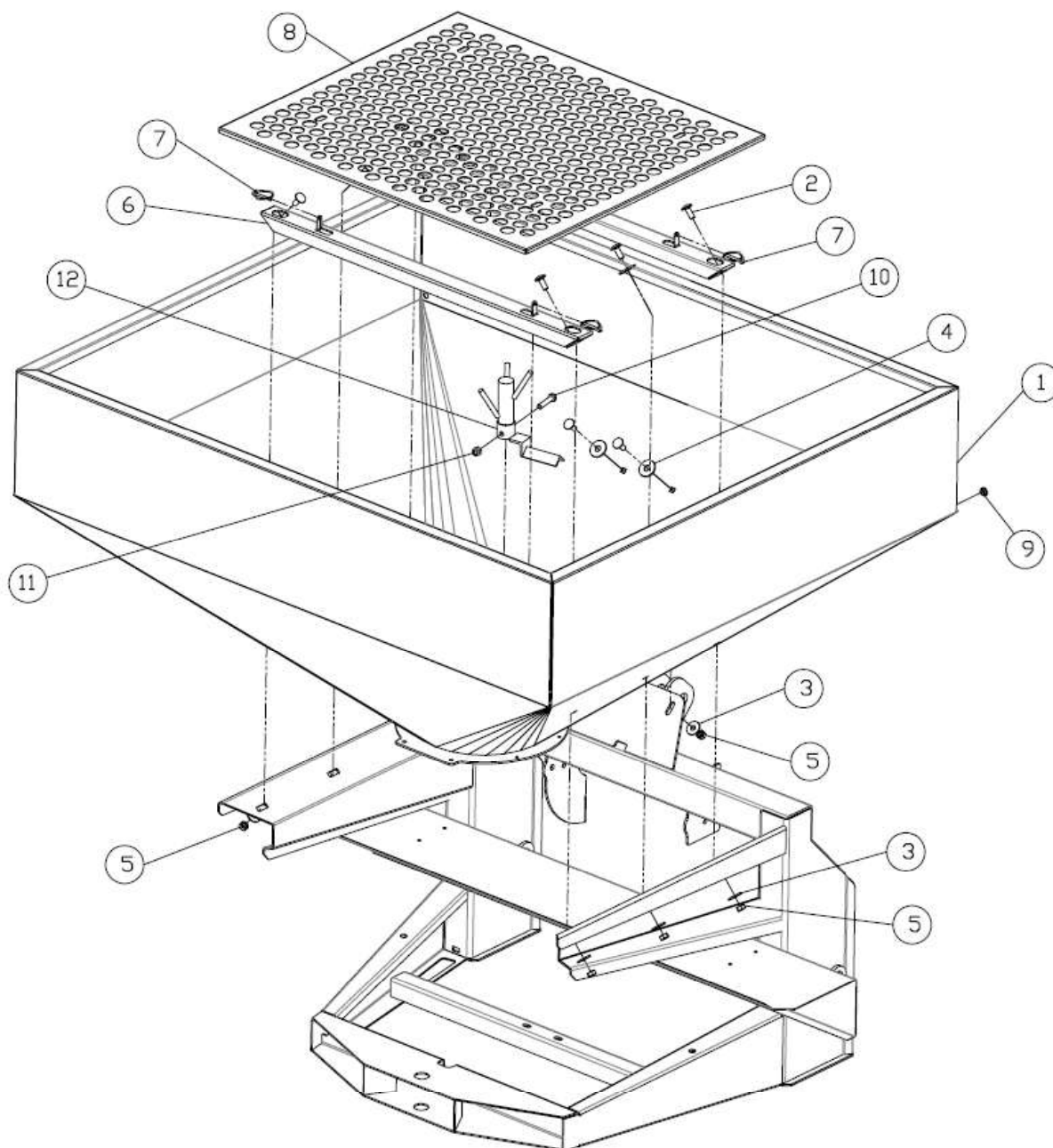
COSMO srl, Via Laghi di Avigliana, 117 – 12022 Busca (CN).

Busca (CN), li _____

The Company Owner: _____

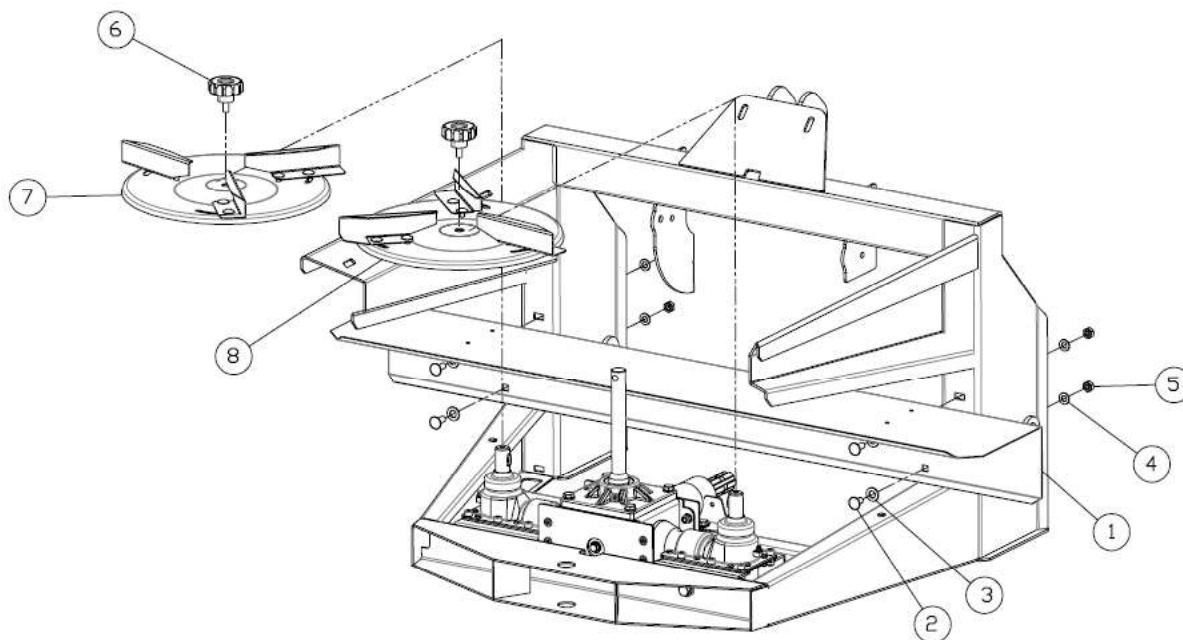
<i>Pos.</i>	<i>Code</i>	<i>Description</i>	<i>Qty</i>
1	620.129	FRAME RE MODEL	1
2	322.240	COMPLETE GEARBOX RE MODEL	1
3	606.470	ASM BOTTOM HOPPER OPENING PLATE RE-A	1
4	300.088	HEX. HEAD. SCREW M8X25 UNI5739 ST. STEEL	4
5	303.056	WASHER 8X17 UNI6592 ST. STEEL	8
6	301.079	SELF-LOCK. NUT M8 UNI7473 ST. STEEL	4
7	300.093	SCREW M6X20 UNI5933 ST. STEEL	4
8	301.081	SELF-LOCK. NUT M6 UNI7474 ST. STEEL	6
9	304.050	PTO SHIELD "90" MOD. RX-RE	1
10	300.121	HEX. HEAD SCREW M6X20 UNI5739 ST. STEEL	4
11	303.115	WASHER 6X24 UNI6593 ST. STEEL	2
12	301.109	SELF-LOCK. NUT M6 UNI7473 ST. STEEL	2
13	620.009	METAL RING PTB/RE	1
14	304.036	RUBBER WASHER PTB/RE	1
15	300.120	HEX. HEAD SCREW M6X16 UNI5739 ST. STEEL	2
16	633.022	LOWER LINK PIN 22-28 ZB RE/RT	2
17	307.004	SPLIT PIN A R MM 4 ST. STEEL	2
18	302.007	LYNCH PIN DIAM. 8 ZB	2
19	633.020	UPPER LINK PN. 25X144 ZB RT-RE-RX	1
20	606.392	LEFT BRACKET SUPPORT OF MAXIMUM VALVE	1
21	606.325	RIGHT BRACKET SUPPORT OF MAXIMUM VALVE	1
22	303.060	WASHER 12X24 UNI6592 ST. STEEL	2
23	303.052	WASHER 10X20 UNI6592 ST. STEEL	4
24	300.123	HEX. HEAD SCREW M12X30 UNI5739 ST. STEEL	2
25	300.089	HEX. HEAD SCREW M10X25 UNI5739 ST. STEEL	2
26	301.068	SELF-LOCK. NUT M10 ST. STEEL	2

ASSEMBLY RE-A / PART B



<i>Pos.</i>	<i>Code</i>	<i>Description</i>	<i>Qty</i>
1	609.060	HOPPER RE-A 1000	1
1	609.061	HOPPER RE-A 800	1
1	609.062	HOPPER REX-A 800 ST. STEEL	1
1	609.063	HOPPER REX-A 1000 ST. STEEL	1
1	609.058	HOPPER RE-F 600	1
1	609.170	HOPPER RE-F 600 ST. STEEL	1
2	300.096	CUPP SQUARE HEADS CREW 10X25 UNI5732 ST. STEEL	8
3	303.053	WASHER 10X30 UNI6593 ST. STEEL	8
4	303.059	WASHER 12X36 UNI6593 ST. STEEL	4
5	301.067	NUT M10 UNI5588 ST. STEEL	8
6	606.176	HOPPER INNER SUPPORT RE	2
7	305.017	LYNCH PIN D 4.50	4
8	642.017	PROTECTIVE GRID RE	1
9	304.052	RUBBER CAP DIAM. 14 MM	2
10	300.106	HEX. HEAD NUT M10X50 UNI5739 ST. STEEL	1
11	301.068	SELF-LOCK. NUT M10 UNI7474 ST. STEEL	1
12	619.058	RE STANDARD AGITATOR	1

ASSEMBLY RE-A / PART C

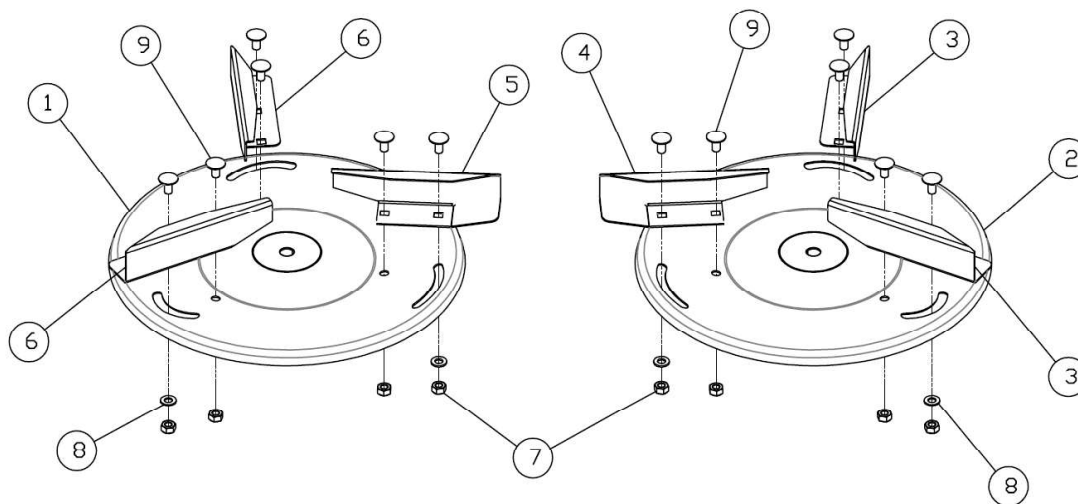




<i>Pos.</i>	<i>Code</i>	<i>Description</i>	<i>Qty</i>
1	639.026	STAINLESS STEEL REAR SHIELD RE	1
2	300.096	CUP SQUARE HEAD SCREW 10X25 UNI5732 ST. STEEL	4
3	303.060	WASHER 12X24 UNI6592 ST. STEEL	4
4	303.052	WASHER 10X20 UNI6592 ST. STEEL	4
5	301.067	NUT M10 UNI5588 ST. STEEL	4
6	302.001	GROOVED KNOB D.60 M10X20	2
7	610.062	LEFT ST. STEEL DISC W/VANES	1
8	610.063	RIGHT ST. STEEL DISC W/VANES	1

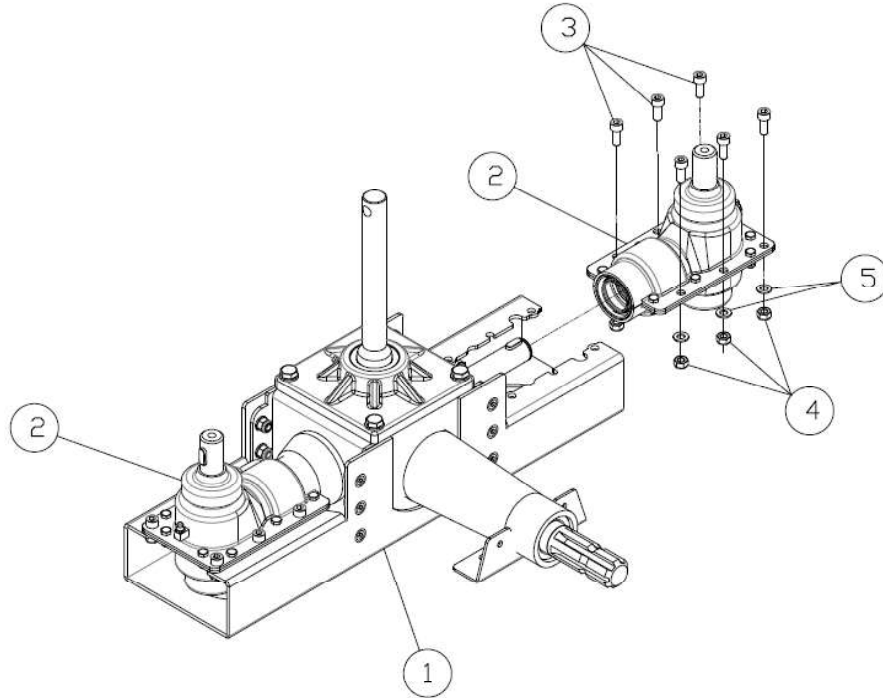
LEFT ST. STEEL DISC WITH VANES – 610.062

RIGHT ST. STEEL DISC WITH VANES – 610.063



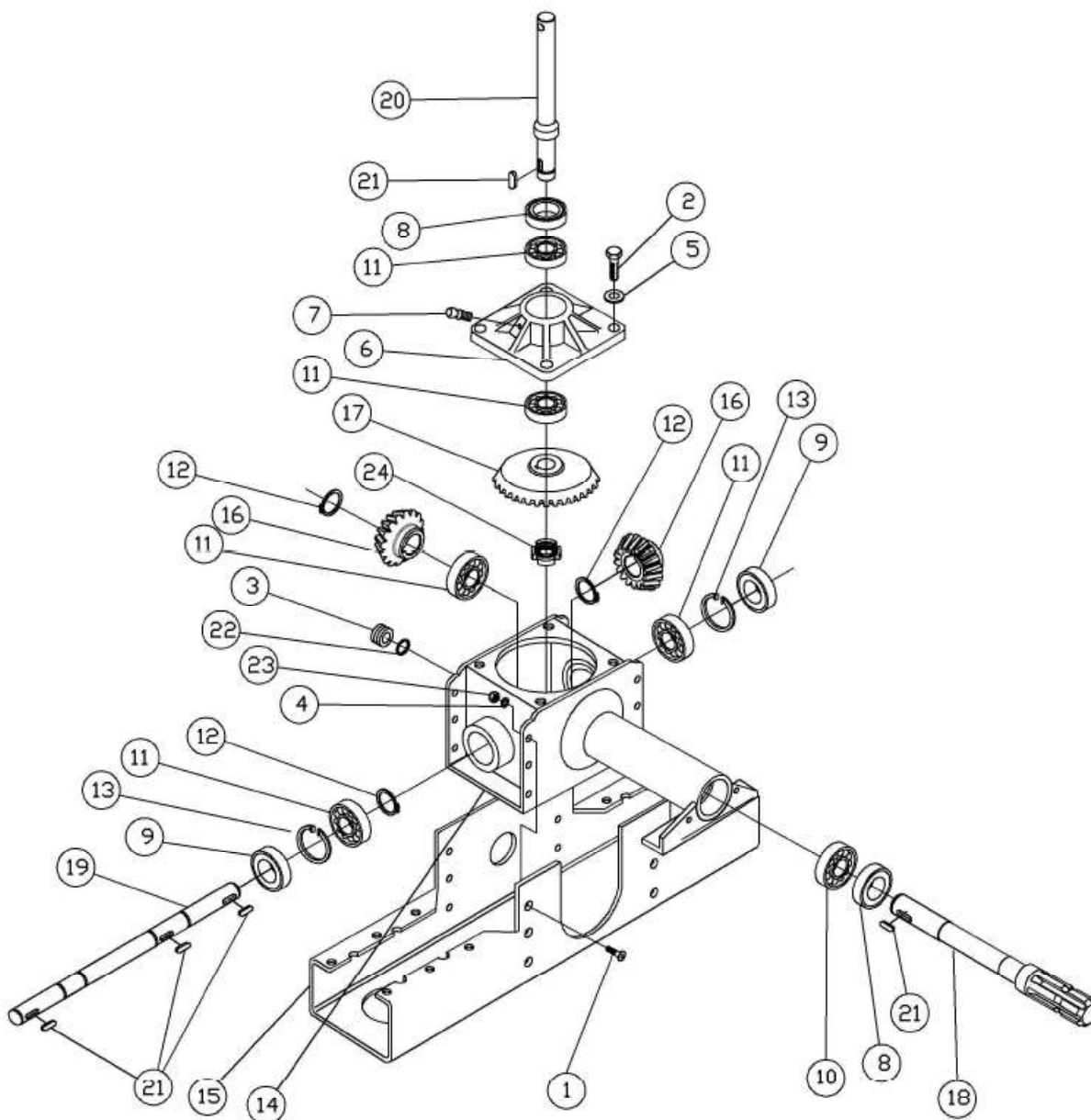
<i>Pos.</i>	<i>Code</i>	<i>Description</i>	<i>Qty</i>
1	610.060	ST. STEEL LF DISC RE	1
2	610.061	ST. STEEL RH DISC RE	1
3	601.041	ST. STEEL VANE 125 RH STRAIGHT RE	2
4	601.043	ST. STEEL VANE 125 RH TILTED RE	1
5	601.042	ST. STEEL VANE 125 LF TILTED RE	1
6	601.040	ST. STEEL VANE 125 SX STRAIGHT RE	1
7	301.064	NUT M8 UNI5588 ST. STEEL	12
8	303.056	WASHER 8X17 UNI6592 ST. STEEL	6
9	300.107	CUP SQUARE HEAD SCREW 8X16 QH3 ST. STEEL	12

COMPLETE GEARBOX MOD. RE – 322.240



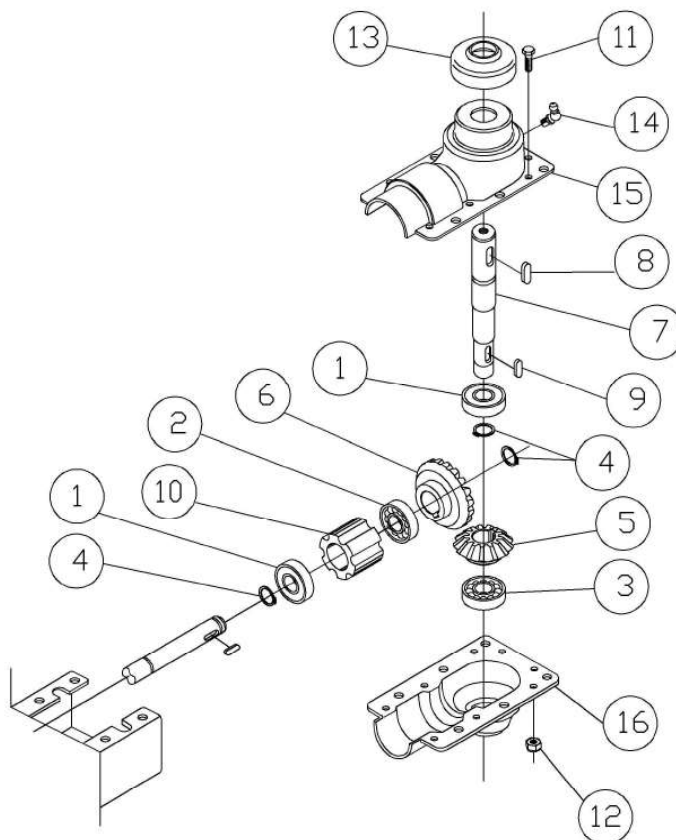
<i>Pos.</i>	<i>Code</i>	<i>Description</i>	<i>Qty</i>
1	322.021	CENTRAL GEARBOX RE	1
2	322.020	SIDE GEARBOX RE	2
3	300.014	CYL. HEAD SCREW 8X16 GALVA	12
4	303.056	WASHER 8X17 UNI6592 GALVA	12
5	301.012	NUT M8 UNI5588 GALVA	12

CENTRAL GEARBOX – 322.021



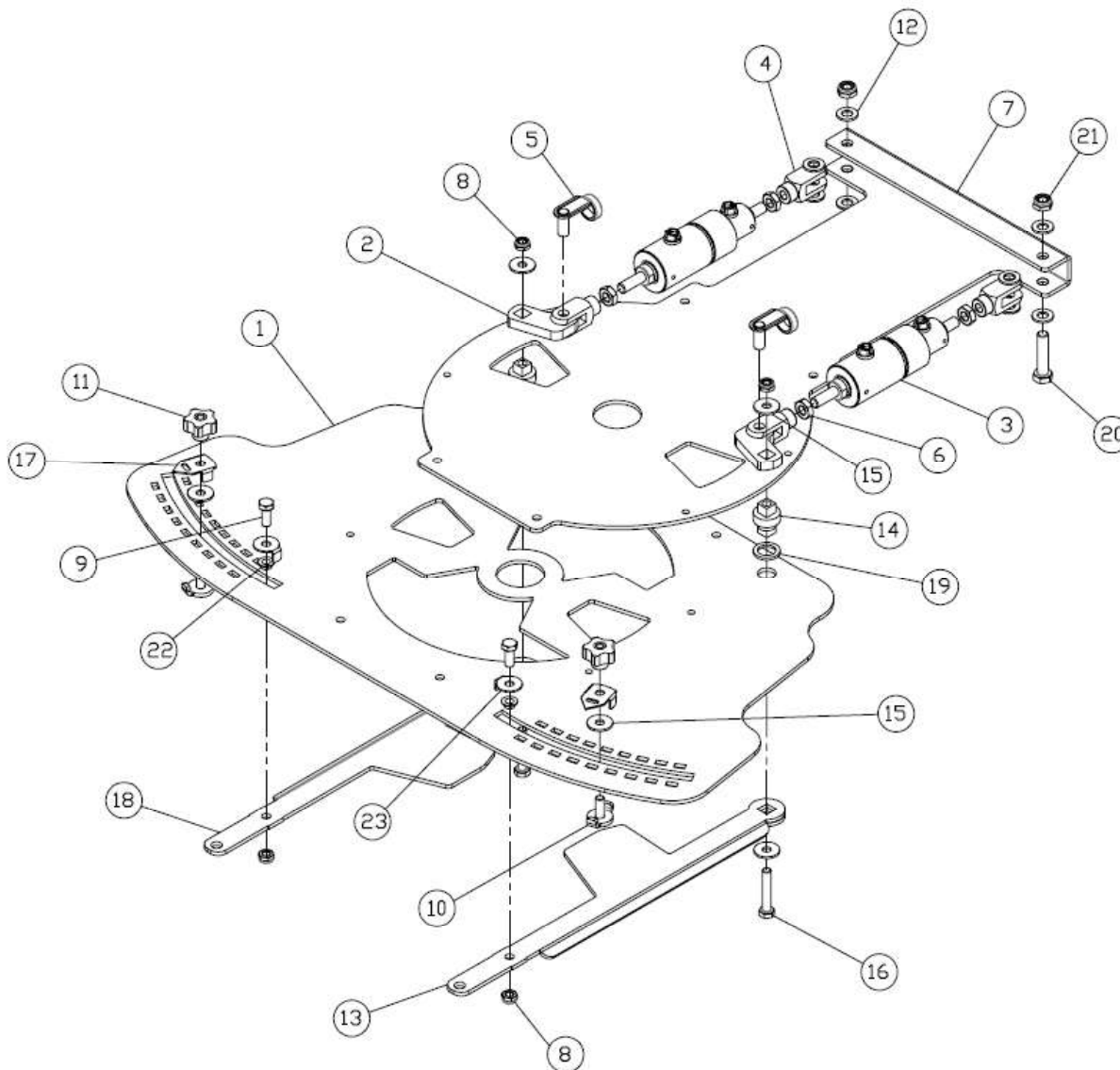
<i>Pos.</i>	<i>Code</i>	<i>Description</i>	<i>Qty</i>
1	300.040	FLAT HEAD SOCKET SCREW 8X20 UNI5933 GALVA	12
2	300.104	HEX. HEAD SCREW 10X30 UNI5739 ST. STEEL	4
3	300.200	CAP SCAR. M14X1,5 CH17	1
4	303.007	WASHER 8X17 UNI6592 GALVA	12
5	303.052	WASHER 10X20 UNI6592 ST. STEEL	4
6	304.026	ALLU. FLANGE R2-24	1
7	306.007	GREASER M6 GALVA	1
8	309.001	SEAL 35X52X7 G	2
9	309.002	SEAL A 25X52X7	2
10	310.019	BEARING 25 52 15 6205 2RS C3 M	1
11	310.002	BEARING 25 52 15 6205	5
12	313.011	SAFETY ELASTIC RING E 25	3
13	313.017	SAFETY ELASTIC RING 52 7437	2
14	314.013	CENTRAL GEARBOX HOUSING RX/RT/RE	1
15	314.014	UPPER GEARBOX HALF R2 ECO	1
16	316.005	PIGNON Z16 R2-24	2
17	316.007	PIGNON Z32 CORONA DENTATA R2-	1
18	323.002	CENTRAL GEARBOX INPUT SHAFT R2	1
19	323.027	CENTRAL LONG SHAFT RE	1
20	323.028	UPPER AGITATOR SHAFT RE	1
21	326.003	KEY 8X7X20 UNI6604	5
22	300.201	ALLU. SEAL 14X18X1,5	1
23	301.001	UPPER NUT AUT. M8 ZB	12
24	301.052	SELF-LOCKING FERRULE PN 5 M25X1.5	1

SIDE GEARBOX - RE - 322.020



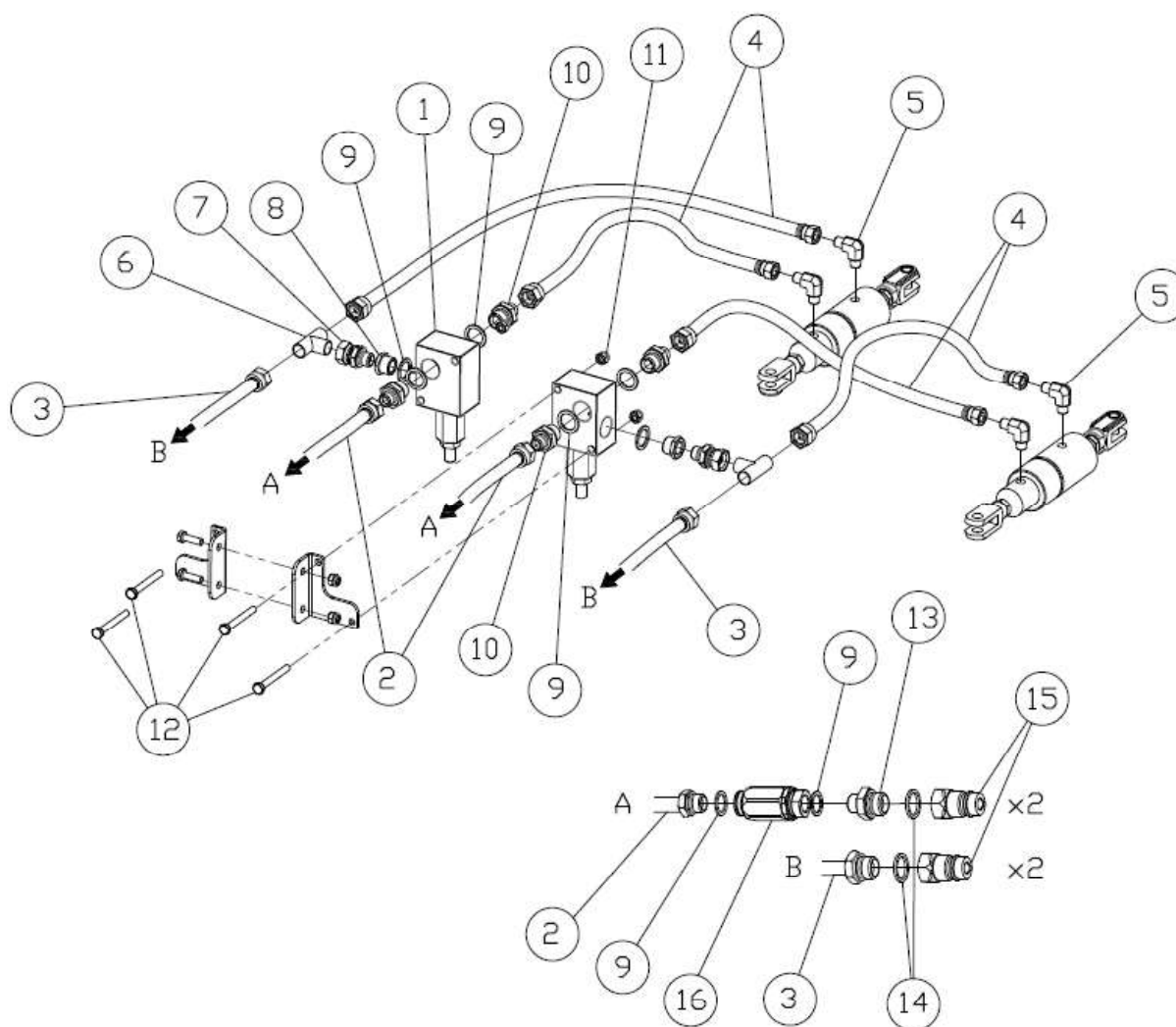
<i>Pos.</i>	<i>Code</i>	<i>Description</i>	<i>Qty</i>
1	310.001	BEARING 25 52 15 6205 2RS	2
2	310.002	BEARING 25 52 15 6205	1
3	310.003	BEARING 20 52 15 6304	1
4	313.011	SAFETY ELASTIC RING E 25	3
5	316.004	PIGNON Z13 R2-24	1
6	316.006	PIGNON Z19 R2-24	1
7	323.023	DISC OUTPUT SHAFT RX	1
8	326.003	KEY 8X7X20 UNI6604	1
9	326.004	KEY 6X6X20 UNI6604	1
10	329.011	SPACER	1
11	300.026	HEX. HEAD SCREW 6X16 UNI5739 GALVA	8
12	301.009	SELF-LOCK. NUT M6 ZB	8
13	304.002	GEARBOX PTO SHIELD	1
14	306.010	GREASER 90° 8X1,25 GALVA	1
15	314.001	LOWER GEARBOX HALF	1
16	314.002	UPPER GEARBOX HALF	1

LOWER PLATE ASSEMBLY AND HOPPER BOTTOM - RE-A - 606.470



<i>Pos.</i>	<i>Code</i>	<i>Description</i>	<i>Qty</i>
1	606.460	LOWER DISCHARGE PLATE RE-A ST. STEEL	1
2	606.463	COUNTER LOWER PLATE RE-A	2
3	623.010	2-EFFECTS CYLINDER RX/REA	2
4	332.004	YOKE 10X20 M10 GALVA	4
5	332.006	CLIPS 10X20 ZB	2
6	301.066	NUT M10 UNI5589 ST. STEEL	4
7	606.462	ST. STEEL HOPPER BOTTOM FLANGE RE-A	1
8	301.065	SELF-LOCK. NUT M8 UNI 7474 ST. STEEL	4
9	300.101	HEX. HEAD SCREW M8X20 UNI5739 ST. STEEL	2
10	606.469	CLIP ASM OPENING PLATE RE-A	2
11	302.005	KNOB DM.40 M8	2
12	303.052	WASHER 10X20 UNI6592 ST. STEEL	8
13	606.464	OPENING PLATE RH LEVER RE-A	1
14	325.081	PIN Q12	2
15	303.051	WASHER 8X24 UNI6593 ST. STEEL	6
16	300.214	HEX. HEAD SCREW M8X45 UNI5739 ST. STEEL	2
17	616.010	LEVER POINTER RE-A	2
18	606.465	OPENING PLATE LF LEVER RE-A	1
19	303.077	WASHER PA6 25X17X2X2.5	2
20	300.146	HEX. HEAD SCREW M10X45 UNI5739 ST. STEEL	2
21	301.068	SELF-LOCK. NUT M10 UNI 7474 ST. STEEL	2
22	325.082	HUB PG 8X10X15X5,5	2
23	606.467	PLATE LOCKING CLIP RE-A	2

HYDRAULIC OPENING SYSTEM – 304.300

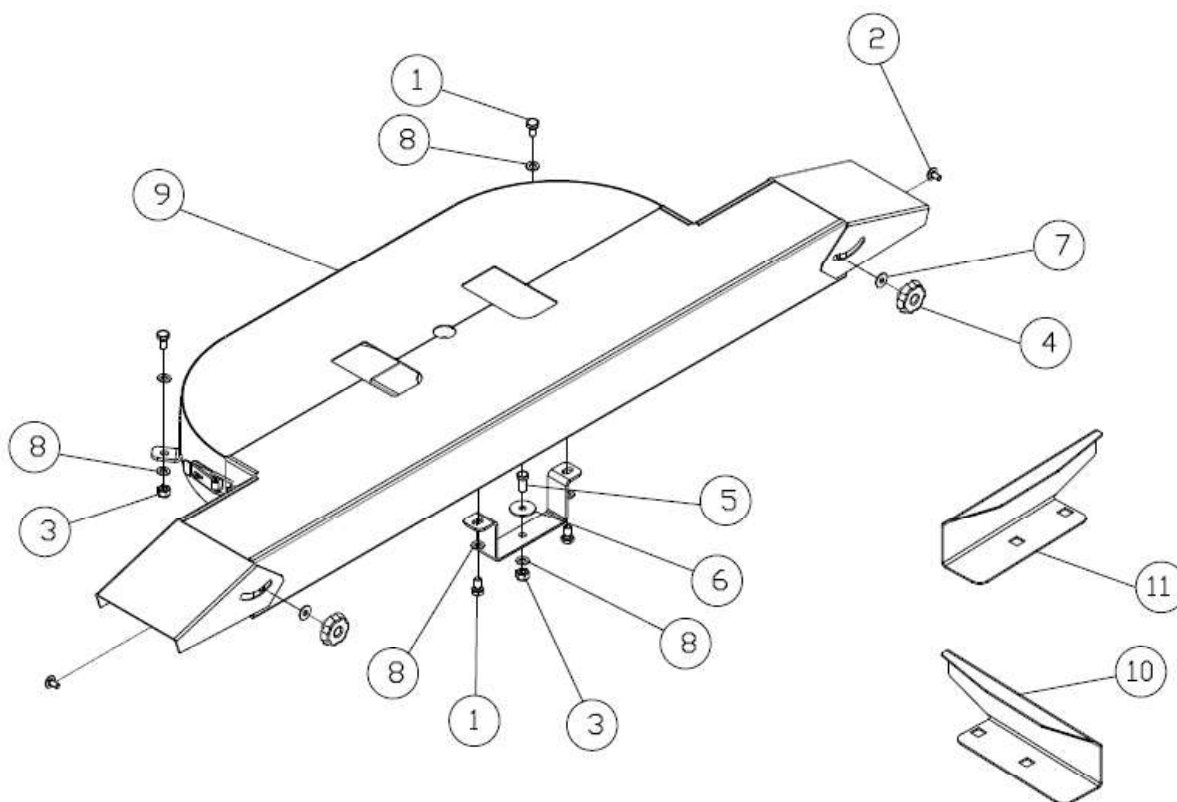


<i>Pos.</i>	<i>Code</i>	<i>Description</i>	<i>Qty</i>
1	304.140	MAX VALVE VM45 3/8	2
2	304.142	HOSE R1 1/4 MD3/8 + FD1/4 2000MM	2
3	304.119	HOSE R1 1/4 MD1/2 + FD1/4 2000MM	2
4	304.143	HOSE R1 1/4 FD1/8 + FD1/4 400MM	4
5	304.144	ANGLE 90° M1/8 BSPT - M1/8 BSPP	4
6	304.124	ADAPTER "T" M1/8 BSPP	2
7	304.122	STRAIGHT ADAPTER M1/4 - FGIR1/4	2
8	304.118	STRAIGHT ADAPTER M3/8 - F1/4	2
9	304.125	COPPER WASHER 3/8	10
10	304.121	STRAIGHT ADAPTER M3/8 - M1/4	4
11	301.081	SELF-LOCK. NUT M6 UNI7474 ST. STEEL	4
12	300.143	HEX. HEAD SCREW M6X50 UNI5737 ST. STEEL	4
13	304.141	STRAIGHT ADAPTER M3/8 - M1/2	2
14	304.132	COPPER WASHER 1/2	4
15	304.127	MALE QUICK COUPLING 1/2	4
16	320.005	UNIDIRECTIONAL FLOW REGULATOR 3/8 40L/MIN	2

ACCESSORIES

PAINTED STEEL DOUBLE BENDING ATTACHMENT – 619.200

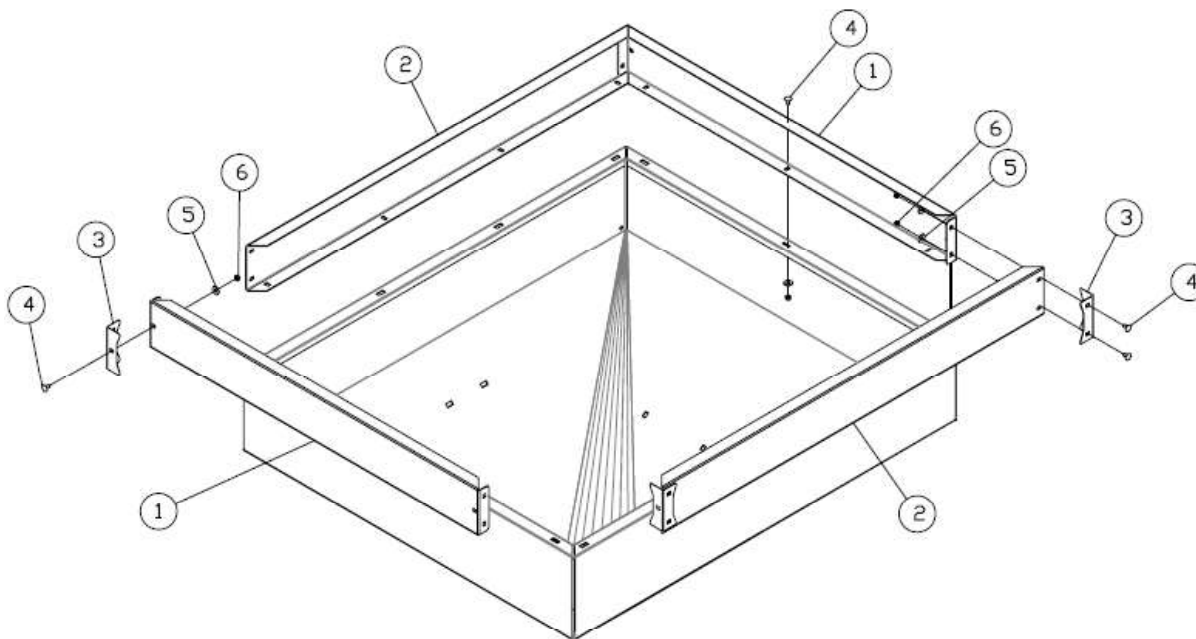
STAINLESS STEEL DOUBLE BENDING ATTACHMENT – 619.201



<i>Pos.</i>	<i>Code</i>	<i>Description</i>	<i>Qty</i>
1	300.016	HEX. HEAD SCREW 10X20 UNI5739 GALVA	4
1	300.103	HEX. HEAD SCREW 10X20 UNI5739 ST. STEEL	4
2	300.030	CUP SQUARE HEAD SCREW 8X16 QH3 GALVA	2
2	300.107	CUP SQUARE HEAD SCREW 8X16 QH3 ST. STEEL	2
3	301.013	SELF-LOCK. NUT M10 UNI7473 GALVA	3
3	301.077	SELF-LOCK. NUT M10 UNI7473 ST. STEEL	3
4	302.005	KNOB DM.40 M8	2
5	300.003	HEX. HEAD SCREW 10X25 UNI5739 GALVA	1
5	300.089	HEX. HEAD SCREW 10X25 UNI5739 ST. STEEL	1
6	303.005	WASHER 10X40 UNI6593 GALVA	1
6	303.116	WASHER 10X40 UNI6593 ST. STEEL	1
7	303.013	WASHER 8X24 UNI6593 GALVA	2
7	303.051	WASHER 8X24 UNI6593 ST. STEEL	2
8	303.015	WASHER 10X20 UNI6592 GALVA	7
8	303.052	WASHER 10X20 UNI6592 ST. STEEL	7
9	620.095	RE PAINTED STEEL DOUBLE BENDING ATTCH.	1
9	620.295	RE STAINLESS STEEL DOUBLE BENDING ATTCH.	1
10	601.040	STRAIGHT ST. STEEL VANE 125 LF RE	1
11	601.041	STRAIGHT ST. STEEL VANE 125 RH RE	1

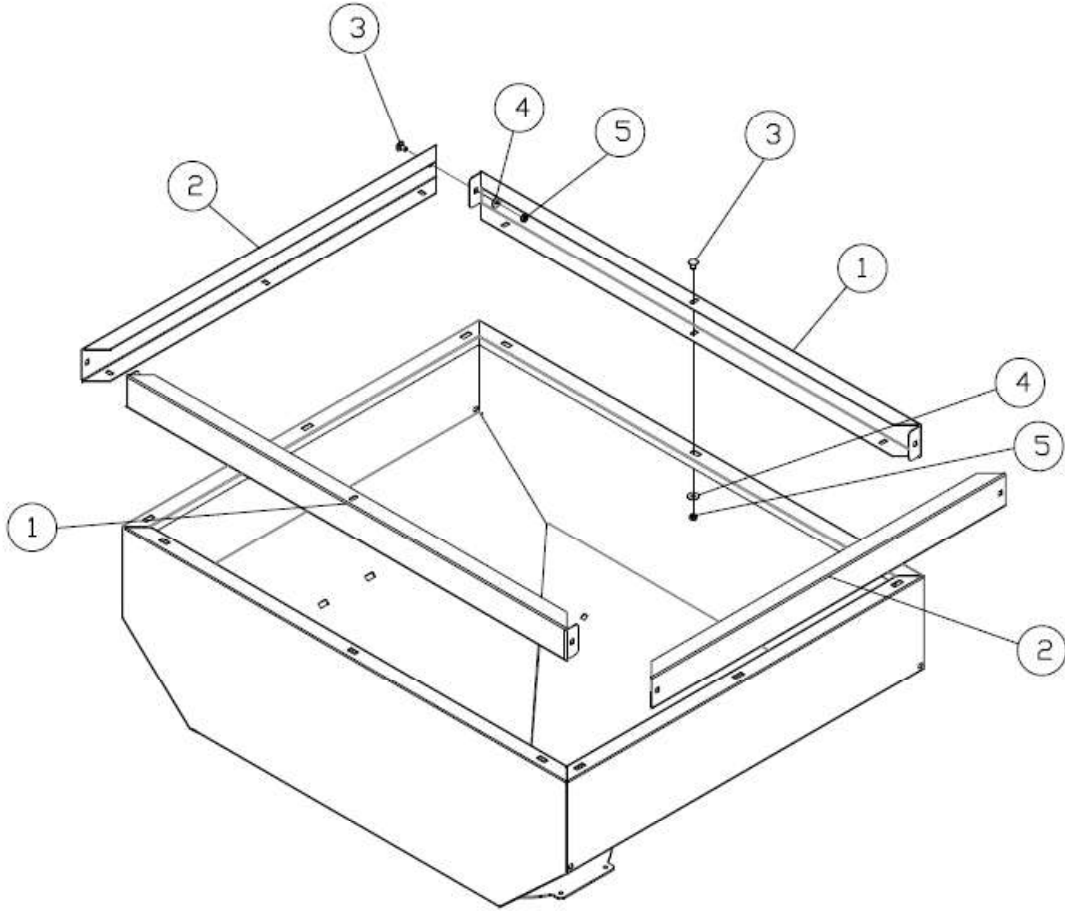
HOPPER EXTENSION RE 250 LT – 609.174

HOPPER EXTENSION RE 250 LT ST.S TEEL – 609.173



<i>Pos.</i>	<i>Code</i>	<i>Description</i>	<i>Qty</i>
1	609.523	SHORT EXTENSION PLATE RE 250LT	2
1	609.527	SHORT EXTENSION PLATE RE 250LT ST. STEEL	2
2	609.522	LONG EXTENSION PLATE RE 250LT	2
2	609.526	LONG EXTENSION PLATE RE 250LT ST. STEEL	2
3	606.308	FINISHING EXTENSION ANGLE RE 250 LT	4
4	300.107	ROUNDHEADED SCREW 8X16 QH3 ST. STEEL	26
5	303.051	WASHER 8X24 ST. STEEL	26
6	301.064	NUT M8 ST. STEEL	26

HOPPER EXTENSION RE-F 100 LT ST. STEEL – 609.163



<i>Pos.</i>	<i>Code</i>	<i>Description</i>	<i>Qty</i>
1	609.548	LONG EXTENSION PLATE RE-F 100LT ST. STEEL	2
2	609.549	SHORT EXTENSION PLATE RE-F 100LT ST. STEEL	2
3	300.107	ROUNDHEADED SCREW 8X16 QH3 ST. STEEL	16
4	303.051	WASHER 8X24 ST. STEEL	16
5	301.064	NUT M8 ST. STEEL	16



Via Laghi di Avigliana 117 - Busca 12022 - CN - Italy
Phone +39 0171 946654 - Fax +39 0171 946723
E-mail: imcosmo@cosmosrl.com - www.cosmosrl.com

