

H Range Grader Blade

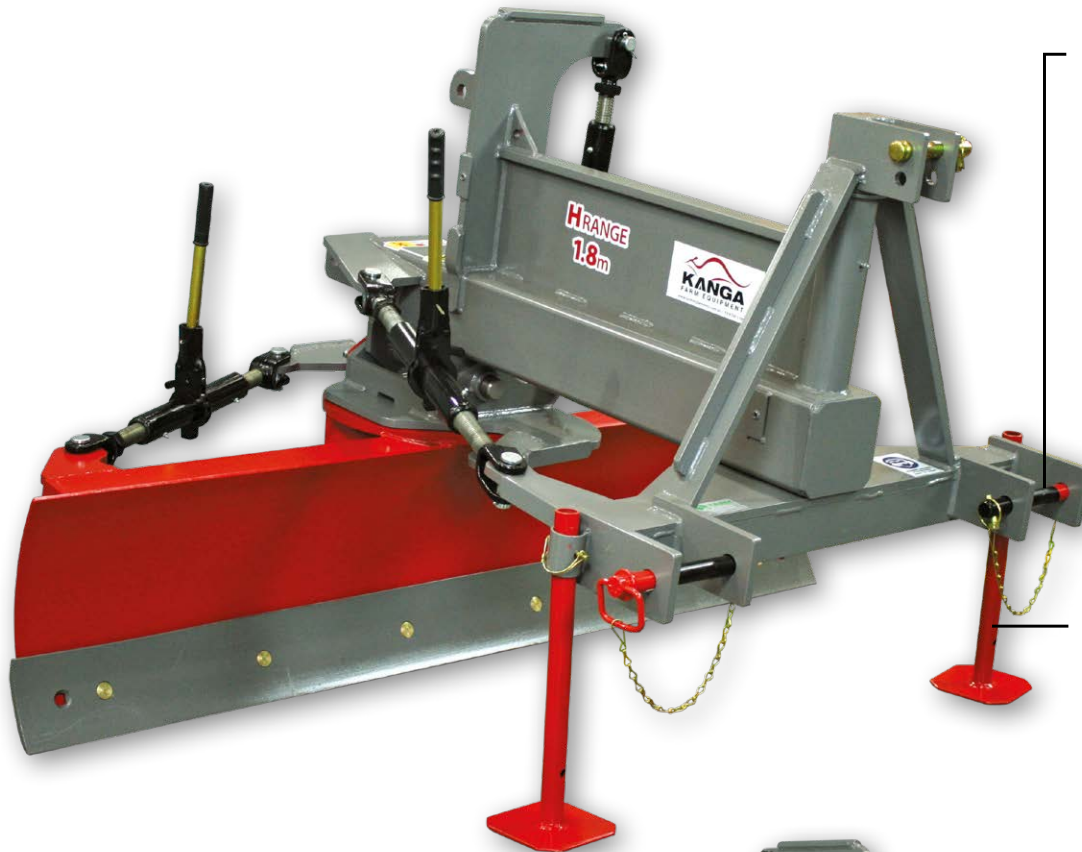


Engineered to cater to tractors ranging from 50 to 80hp, the KANGA H Range Grader Blades are proudly manufactured in Australia to withstand the challenging conditions of the Australian landscape.

These grader blades offer a choice of manual (ratchet jack) or hydraulic (cylinder) adjustment, providing operators with versatile capabilities:

- The mouldboard can be set to move material side to side, allowing for precise material distribution.
- The mouldboard can be tilted to create slopes on dirt tracks or for efficient drain cutting and management.
- The headstock can be offset, enabling grading in hard-to-reach areas with ease.

The H Range Grader Blades mouldboard has channel reinforcing and gussets for added strength and is sandwiched to the headstock with solid 16mm turntables. Its involuted design ensures efficient and continuous rolling and clearance of material. Optional end caps can be fitted to assist in containing the material within the blade area, further enhancing performance.



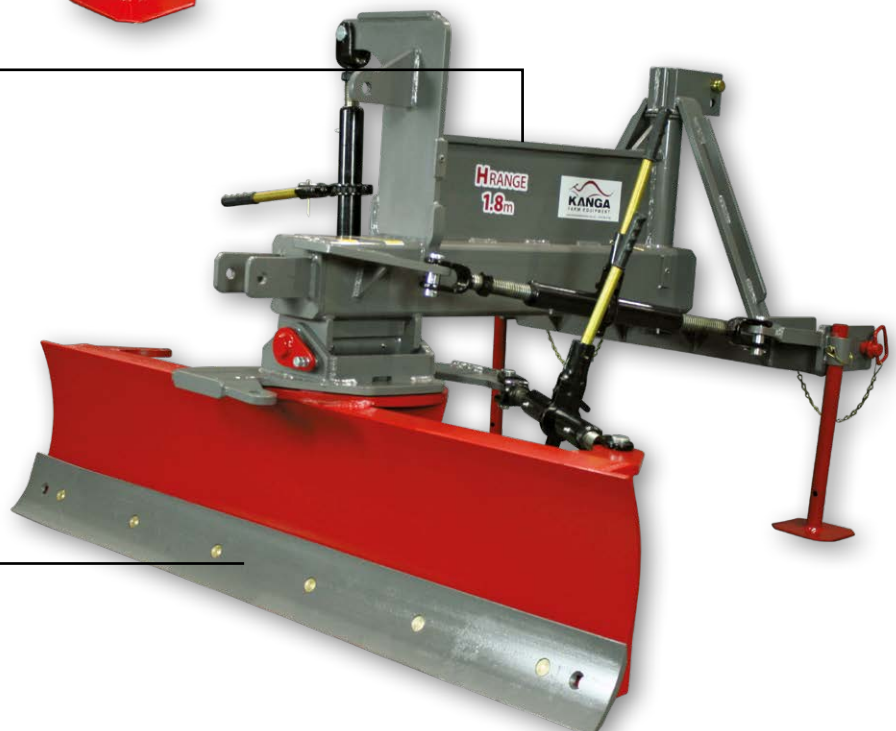
3-Point linkage

Category 2. Two-plate, double clevis mount designed to absorb lateral load when turning; increasing implement longevity.

Front parking stand facilitates connection to tractor.

Headstock

Steel 150 x 150 x 9mm square tube, fully welded and reinforced.

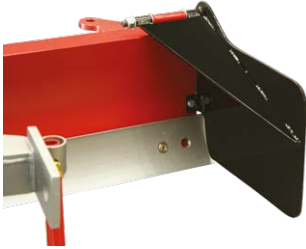


Reversible grading edge

150 x 12mm. Manufactured from high alloy BORON steel that is heat-treated, quenched and tempered.

For the final pass, the KANGA H Range Grader Blades offer optional manual or hydraulic depth wheels, providing precise height control. The hydraulic adjustment models also have the option of an additional diverter valve system, allowing operators to operate all movements even when their tractor has insufficient remotes.

Options



KBHW
H Range end caps



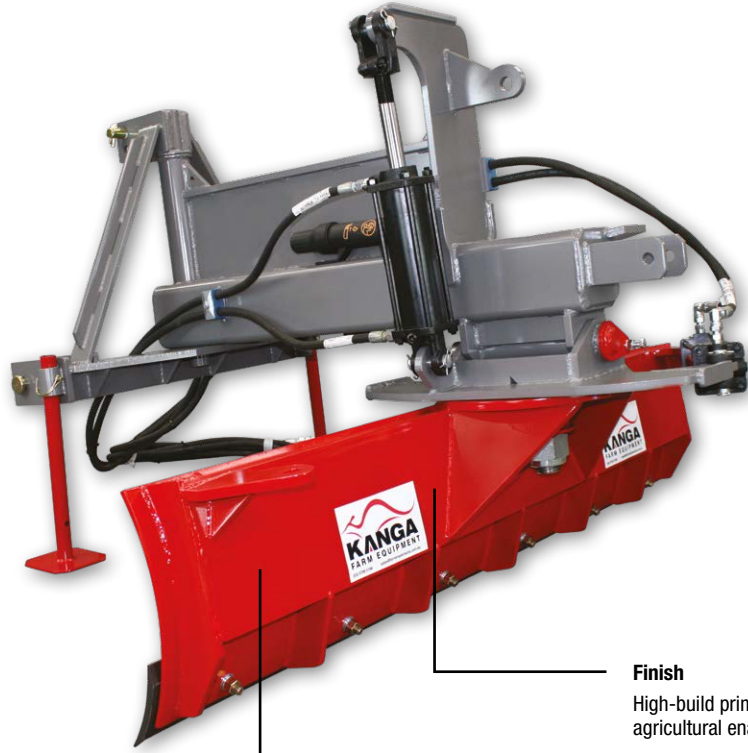
KBHDWM
H Range manual depth wheel



KBHDWH
H Range hydraulic depth wheel



KBHDV
H Range diverter valve system



Finish
High-build primer and agricultural enamel top coat.

Mouldboard
375 x 8mm mouldboard can be reversed 180°, enabling efficient back blading by pushing material backwards.

Code	MANUAL adjustment		HYDRAULIC adjustment	
	KBH180M	KBH240M	KBH180H	KBH240H
Size reference	1.8m 6'0"	2.4m 8'0"	1.8m 6'0"	2.4m 8'0"
Adjustments	Angle, offset and tilt			
Controlled by	Heavy-duty, lockable, course threaded, ratchet jack		3" hydraulic rams and hoses	
Blade angle	0° - 30° forwards and backwards			
Blade offset	0° - 20° left and right			
Blade tilt	0° - 30° up and down			
Overall width (mm)	1800	2400	1800	2400
Tractor range (hp)	50 - 80 42 - 67 @ PTO	60 - 80 50 - 67 @ PTO	50 - 80 42 - 67 @ PTO	60 - 80 50 - 67 @ PTO
Weight (kg)	360	380	400	420